

NJIT



New Jersey's Science &
Technology University

THE EDGE IN KNOWLEDGE

Gateway Project

- Developer (Monument) to deliver Greek Village design (six duplexes) plus “Building N” (residential unit) in August
- Building N planned to be a JV with the Developer with commercial space on ground floor
- Greek Village to open 2013/2014
- JLL and St. Michael’s in final stages of negotiating a JV contract for MLK parking deck
- NJIT will secure an equity position in the parking deck through agreement with JLL

Executive Order #51

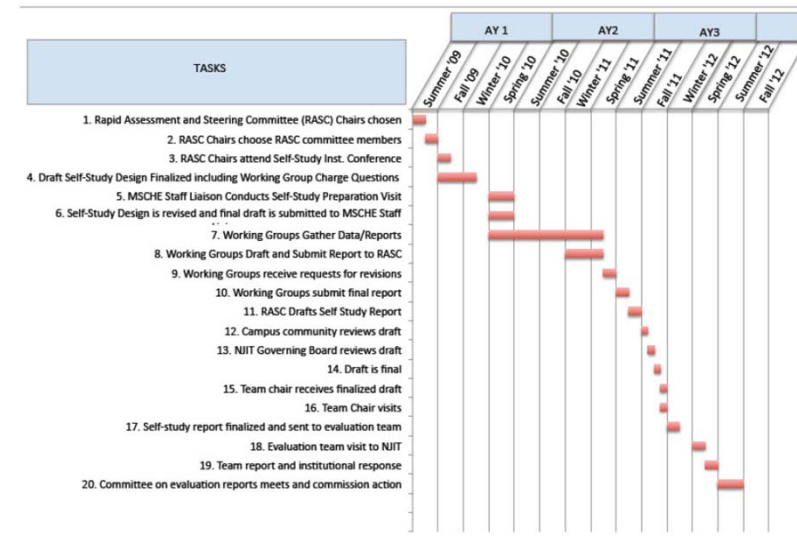
- WHEREAS, unlike the vast majority of medical schools in most other states which are affiliated with a research university, **UMDNJ is a free-standing institution and has no affiliation with a research university;**
- Executive Order #51; establishes the UMDNJ Advisory Committee
- Committee charged with examining delivery of medical education in NJ and developing recommendations
- Committee appointed April 4, to report in September (see April 9 campus-wide e-mail)
- First committee meeting was April 25

Executive Order #51

- Committee should recommend regarding the following:
 - Whether RWJMS and the SPH should be merged with Rutgers University's New Brunswick-Piscataway campuses;
 - **Whether UMDNJ's Newark based schools should be merged with any of the senior public higher education institutions in Newark;**
 - Whether UMDNJ's South Jersey – based schools should be merged with any of the senior public higher education institutions in South Jersey;
 - **Whether NJIT should start its own medical school;**
 - How [graduate] medical education should be delivered in South Jersey;
 - Whether the various public nursing schools should merge;

Timeline: Where We Are Now: Spring and Summer, 2011

- May 4: Working Group Reports Round 2 Submitted and in Review
- May 13: Review by Robert Clark
- May 20: Working Group Reports Finalized and Placed on Self-Study Site
- Summer : RASC Prepares Near-Completion Final Report



Need for a Contemporary Governance System: The NJIT Model

- **Representation** among shareholders
- Clearly defined mission, vision, and **authority** associated with a governing body such as a *University Senate*
- **Deliberation** as an assurance of rigorous analysis
- **Structured** standing committees associated with the *Senate*
- **Transparent** committee processes and actions
- **Responsive** to New Jersey, regional, and federal environments
- **Timely closure** on key decisions

Fiscal Year 2012 Preliminary Capital Budget

Use	Revenue (000's)	Expense (000's)		Comment
Plant Fund	\$8,800			From carryforward funds
Bond Funds	\$5,000			New bonding/old bonds retired
Maintenance		\$6,000		From new bonding/old bonds retired
Central King		\$5,000		Bond funds
Equipment		\$1,400		Short term bonding
Recurring Budget Shortfall		\$1,400		Return from Plant Fund
Totals	\$13,800	\$13,800		

Central High Architects: Rogers Marvel

