

Final Outline Review for Self-Study Report: Year 2, Second Stage

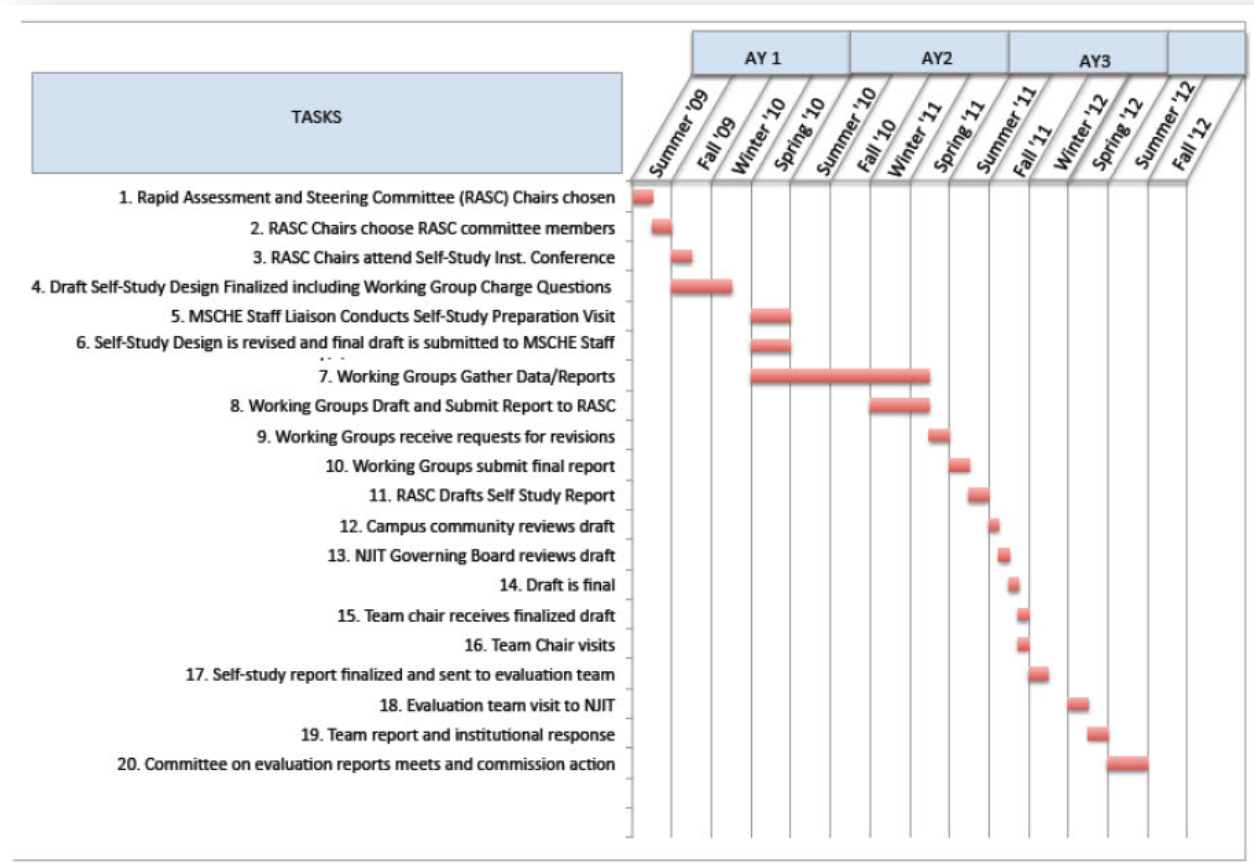
**Workshop Review with Rapid Assessment and Steering
Committee**

January 24, 2011

Timeline for Spring 2011

- **Draft 1. February 28: Working Groups Submit *Preliminary Drafts***
 - Bob Clark Visits
- **Review 1. March 18: RASC Returns Comments on Preliminary Drafts**
- **Draft 2. April 15: Working Groups Submit *Near Completion Documents* to RASC**
- **Review 2. April 30: RASC Returns Comments on Near Completion Draft to Working Groups**
- **Final Report. May 12: Working Groups Submit *Final Copy* to RASC**

Summer 2011, Fall 2011, Spring 2012



Schedule: Fall 2011 – Spring 2012

Fall 2011

Fall, Academic Year 3

- Campus community reviews draft self-study report
- Evaluation team Chair reviews draft self-study report
- Institution's governing board reviews draft self-study report
- Institution sends draft self-study report to evaluation team Chair, prior to Chair's preliminary visit
- Team Chair makes preliminary visit at least four months prior to team visit
- Institutions with a selected-topics self-study that elect to have a document review *prior* to the team visit: Conduct an early document review
- Institution prepares final version of the self-study report

Winter or Spring, Academic Year 3

- Institution sends final report to evaluation team and to MSCHE at least six weeks prior to team visit

Spring 2012

Spring, Academic Year 3

- Team visit
- Institutions with a selected-topics self-study that elect to have a document review *during* the team visit: Conduct a concurrent document review
- Team report
- Institutional response

Summer or Fall after Academic Year 3

- Committee on Evaluation Reports meets
- Commission action

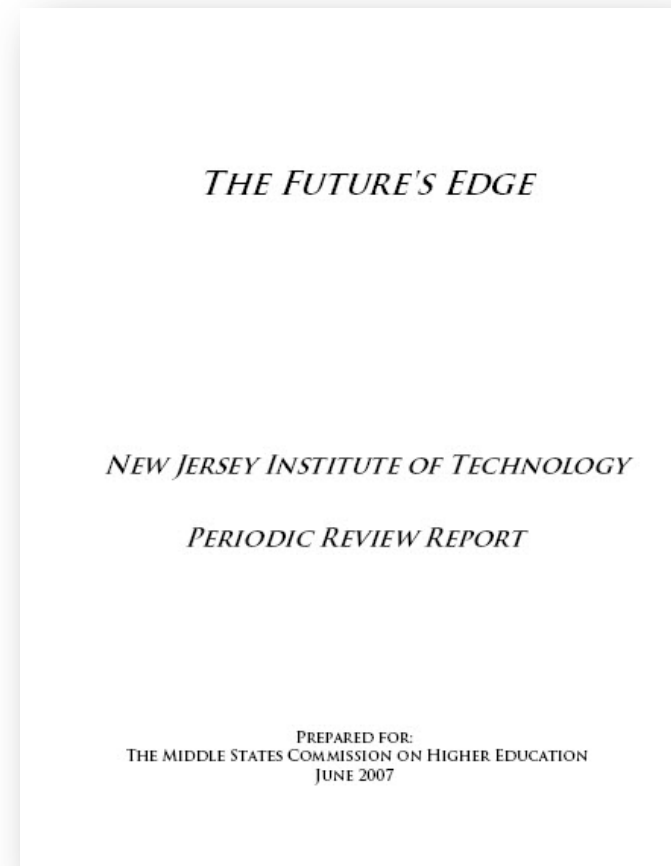
Advice for Writing the Group Reports: Draft Congruently

2002 Self Study Report

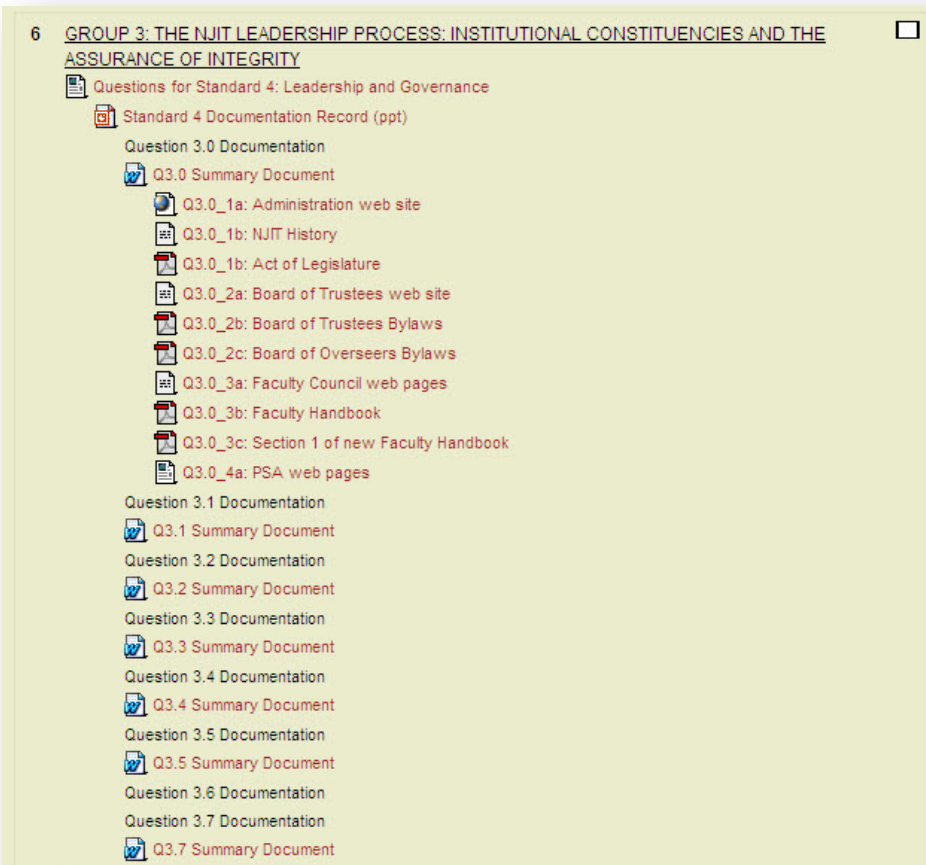
2007 Periodic Review Report

TABLE OF CONTENTS

I. Overview of NJIT.....	1
A. General Information.....	1
B. The Colleges of the University.....	9
C. Organization and Administration.....	13
D. Employee Relations.....	18
E. Support Units and Programs.....	19
F. Mount Laurel Campus.....	30
G. Big Bear Solar Observatory.....	32
H. Community Service.....	33
II. Institutional Change and Renewal.....	36
III. Institutional Effectiveness and Outcomes.....	43
IV. Action to Address 1997 Periodic Review Recommendations.....	49
V. Organization for the Self-Study and Strategic Planning.....	53
VI. Developments, Trends and Issues.....	55
A. Mission, Goals and Objectives.....	55
B. Administration, Organization and Governance.....	56
C. Students.....	57
D. The Academic Program.....	63
1. Faculty.....	64
2. Undergraduate Educational Programs and Curricula.....	73
3. Graduate Studies and Research.....	77
4. Continuing and Distance Education and Instructional Technology.....	81
E. The Library, Technology and Learning Resources.....	86
F. Planning and Resource Allocation and Financial Resources.....	88
G. Facilities, Equipment and Other Resources.....	93
H. Visibility.....	96
VII. The Strategic Plan.....	101
A. Students and Student Life.....	102
B. The Academic Program.....	106
1. Faculty.....	106
2. Undergraduate Educational Programs and Curricula.....	107
3. Graduate Studies and Research.....	109
4. Distance Education and Instructional Technology.....	112
C. The Library, Technology and Learning Resources.....	114
D. Economic Development.....	115
E. Planning, Resource Allocation and Financial Resources.....	116
F. Facilities, Equipment and Other Resources.....	118
G. Visibility.....	119
H. Fund Raising.....	120



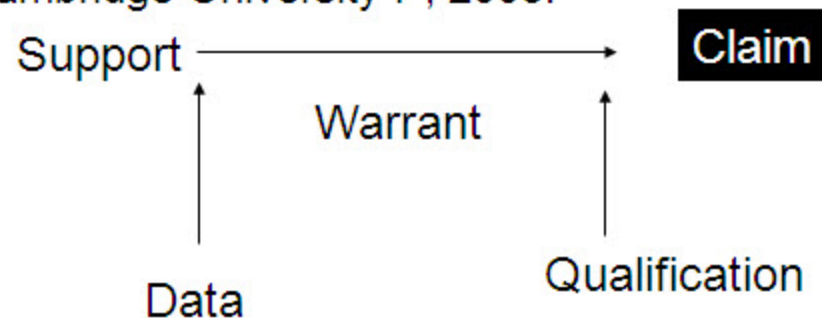
Advice for Writing the Group Reports: Build Digital Document Archive



Advice for Writing the Group Reports: Support Claims with Evidence

Toulmin's Logic: A Supported Claim

- Stephen Toulmin. The Uses of Argument. New York. Cambridge University P, 2003.



Advice for Writing the Group Reports: Attend to Style—Use Active Voice, Be Sensitive to Tense

2007 Periodic Review Report

NJIT has taken concerted action on the full range of committee suggestions. This is especially true in the areas of planning and assessment. With the arrival of President Robert A. Altenkirch the strategic plan was restructured and refined to focus on specific strategies toward "attaining a national reputation for excellence." Metrics with annual targets have been built into the plan to mark progress toward achieving stated objectives in pursuit of this goal. The Office of Institutional Research and Planning has also expanded its involvement in university committees to disseminate the research studies it routinely conducts. Today, the impact of metrics and assessment is not a novelty but an expected part of the university discourse on continuous improvement.

Agenda



Agenda for Monday, January 24, 2011

Time	Meeting
11:30-12:00	General Meeting with Rapid Assessment and Steering Committee and Chairs and Vice Chairs
12:00-1:00	Group 1: Sanchoy Das, Bob Barat, Norbert Elliot ----- Group 2: Gabrielle Esperdy, Nancy Jackson, Ed Bishof ----- Group 3: Dale Gary, Vincent Oria, and Tony Howell ----- Group 5: Edwin Hou, Barry Cohen, Fadi Deek
1:00-2:00	Group 4: John Bechtold, Steve Tricamo (TBD), Perry Deess, and Rich Sweeney ----- Group 6: Bob Barat, Nancy Steffen-Fluhr, Fadi Deek, and Katia Passerini ----- Group 7: Rob Friedman, Taha Marhaba, and Judith Redling

Discussion and Workshop

