



Budget Environment

- 7% reduction in State appropriation + zero salary program funding
 - 20.6% to recover State shortfall (including Rutgers)
 - 16.3% to recover State shortfall (not including Rutgers)
 - 8% tuition increase cap imposed
- Zero merit based awards for new students
- No capital/maintenance funding
- Internal budget demands equivalent to 14% of State appropriation



FY07 Budget/Tuition and Fees

- 7% tuition/fee (price) increase compared to
 - 8% tuition increase cap
 - 8% plus tuition increase at other institutions
 - recovers modest yield (average cost increase \approx 2.5% less than 7% price increase)
- 14% increase in student awards (including Strategic Plan allocations)
- 4.5% of recurring budget built on recurring expenditure reduction
- 1.7% of recurring budget built on non-recurring funds
- 1.6% of budget to capital/maintenance (0.9% of plant replacement value compared to APPA recommendation of 1.5-3.0%)

http://www.njit.edu/publicinfo/pdf/public_board_budget-tuition.pdf



FY07 Plant Fund	
Project/Tuition Rate Increase	7%
Warren St. Prop/demo	\$2,500
Renovate Fleisher Gym	\$1,200
SOA Studio	\$1,100
Cypress Fire Alarm	\$350
Classrooms	\$150
Acad Depts	\$200
Kupfrian Air Handler	\$300
Cypress Elevators	\$160
Other Maintenance	\$500
Total	\$6,460
Plant Fund FY06 Balance	\$2,300
Plant Fund FY07 Allocation	\$3,056
Private Fund Transfer	\$1,200
Plant Fund FY07 Balance	\$96

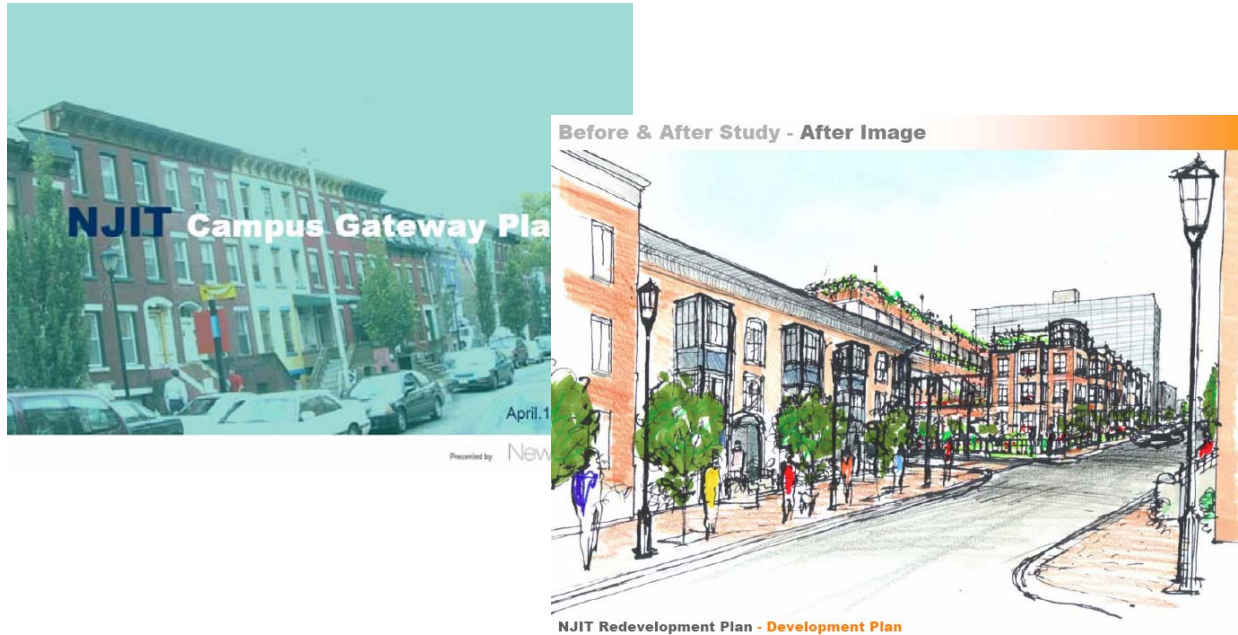


FY08 and Beyond Budget Planning

- Faculty Separation Incentive Program (recurring savings)
- Cell phone tower site rental (recurring revenue)
- Close 240 MLK facility (recurring savings)
- Rehab 240 MLK (recurring revenue)



FY08 and Beyond



<http://www.njit.edu/v2/activities/greekvillage.html>



FY08 and Beyond

- Raze Warren St. property structures for temporary parking
- Develop residential housing plan including The Village at Newark, residence halls, Greek Village, Campus Gateway
- Complete Honors College & Athletics Campaigns and begin major campaign; needs assessment, wealth screening, feasibility study, launch
- Complete “academic” plans and assessment of program inventory compared to competition and revisit research “niches”
- Complete Campus Master Plan
- Participate in research university restructuring “discussions”



Top-Tier National Research University

- Peer assessment (➔) and graduation rate (⬆) account for >40% of ranking
- Increased “performance” in areas with 33% weight
- Decreased in “performance” in areas with weights of 10%