

NJIT



New Jersey's Science &
Technology University

THE EDGE IN KNOWLEDGE

This Year and Beyond

Quality of Life	Private Source Revenue	Develop Core of Nationally Recognized Programs	Improve Research and Intellectual Property Productivity	Recruit High Achieving Students from Diverse Backgrounds
Master Plan	Honors Campaign	Program Investment/Reinvestment	Stem Cell Research Facility	New Program Development
Gateway Plan	Athletics Campaign	New Program Development		
	Major Campaign			

- Major Campaign
 - Feasibility study proceeding/Case Statement first draft
- Campus Master Plan
 - Campus meetings in October
 - Input to the Major Campaign Case Statement
 - Agreement with NPS on Central High purchase/draft contract being reviewed

Proposed Plan

Athletics / Recreation Facility

Potential Academic Tower

New Student Housing

Gateway Plan mixed use Greek Village

New Tiernan gateway

Academic Space Expansions

New Central Green

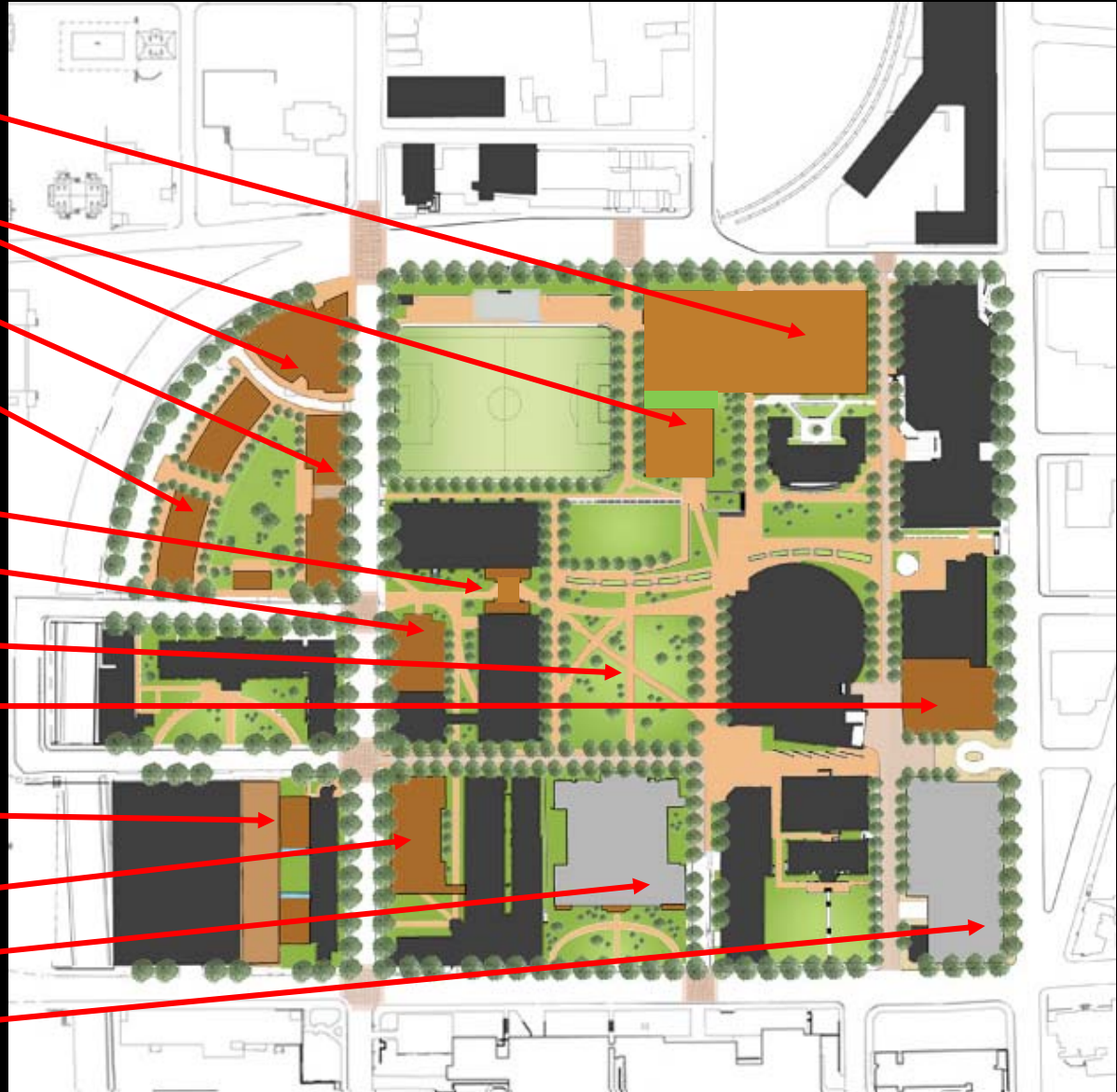
Library, CAB and service core expansion

York Center and parking garage expansion

New Academic Facility

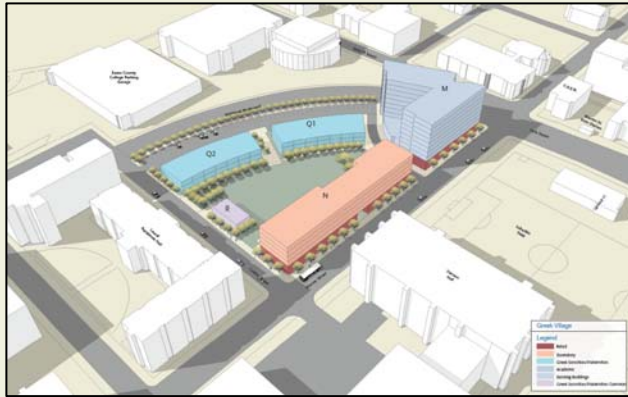
Central High School

Gateway Plan hotel / conference center



- Major Campaign
 - Feasibility study proceeding/Case Statement first draft
- Campus Master Plan
 - Campus meetings in October
 - Input to the Major Campaign Case Statement
 - Agreement with NPS on Central High purchase/draft contract being reviewed
- Gateway Plan
 - Planning documents complete/City approval in process
 - Community support
(<http://dailynewark.com/2007/11/29/out-of-the-ivory-tower-and-into-the-streets/>)

Greek Village



MLK Gateway



St. Michael's



University Park



MLK Pedestrian "thread"

NJIT Campus Gateway Redevelopment





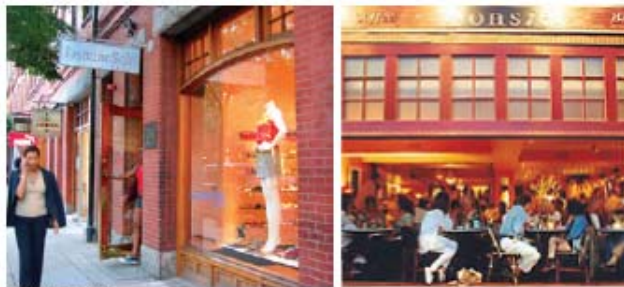


September, 2007

The Ohio State University, Columbus



UNIVERSITY SQUARE
University of Pennsylvania, Philadelphia



NEWBURY STREET
BOSTON, MA



EXISTING CONDITIONS



SKETCH OF RENOVATION

NJIT

Financial Business Terms Book Confidential Proprietary Commercial Information

September 2007


 JONES LANG
LA SALLE


 ELKUS | MANFREDI
ARCHITECTS

FINAL DRAFT

NJIT

Conceptual Redevelopment Master Plan for an Area in Need of Rehabilitation

September 2007


 JONES LANG
LA SALLE


 ELKUS | MANFREDI
ARCHITECTS

- Program Investment/Reinvestment
 - Faculty recruiting underway; 15 in FY08. 11 in FY09
 - Space needs to be addressed in spring
- Program Development
 - Underway
 - Driven by
 - Addressing college bound senior interest
 - Addressing enrollment competition

NJ 2007 College-Bound Seniors Intended Majors

Intended Major	Interest
Business Management	17%
Health Professions	16%
Education	11%
Visual and Performing Arts	9%
Engineering	7%
Biological and Biomedical Sciences	5%
Total	65%

Program Changes from 2000 to 2006			
Institution Name	Added	Removed	% Chng 00 to 06
Drexel University	21	1	51.20%
University of Missouri-Rolla	15	0	26.60%
Georgia Institute of Technology	7	2	21.10%
Stevens Institute of Technology	12	0	17.20%
Carnegie Mellon	51	2	15.60%
Illinois Institute of Technology	22	6	13.20%
Florida Institute of Technology	17	3	11.60%
NYIT	10	8	9.70%
Cooper Union	0	0	9.30%
University of Alabama in Huntsville	3	0	8.00%
University of Delaware	8	0	6.90%
University of Maryland-Baltimore	6	1	3.00%
Virginia Tech	9	3	2.20%
Clemson University	12	1	-0.90%
New Jersey Institute of Technology	3	0	-6.90%
Rensselaer Polytechnic Institute	13	0	-7.30%

Program Development

NCE	Healthcare Systems Management (EMS)
	Energy and Power Systems (MS)
	Pharmaceutical Processing and Manufacturing (MS)
	Pharmaceutical Systems Management (MS)
	Pharmaceutical Materials Science and Engineering (MS)
	Bioelectronics (MS)

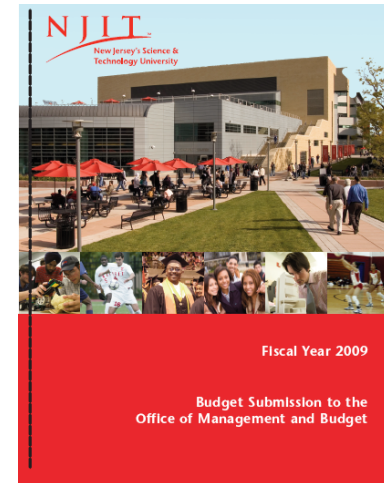
SOM	Health Systems Management (BS)
	Financial Engineering (BS)
	Financial Engineering (MS)
	International Business (BS)
	International Business (MS)
	New Media Business Development (BS)
	New Media Business Development (MS)
	Management Information Systems (MS)
	Enterprise Development (BS)
	Enterprise Development (MS)

NJSOA	Digital Design (BS)
	Interior Design (BS)
	Art (BFA)
	Graphic Design (BA/BS)
	Landscape Architecture (BS)

CCS	Computing and Business (BS)
	Computing and Business (MS)
	Business and Information Systems (BS)
	Business and Information Systems (MS)

CSLA	Computational Sciences (BS)
	Biophysics (BS)
	Biochemistry (BS)
	Pharmaceutical Chemistry (MS)
	Biostatistics (MS)
	Law, Technology and Culture (BA)

- State Budget
 - OMB submission in
 - NJIT Priorities
 - Central High renovation
 - Salary program
 - Grad Assist health benefits
 - Authorized FTE
 - \$3 billion shortfall in State budget
 - Focus in Trenton on Monetization





New Jersey's Science & Technology University

THE EDGE IN KNOWLEDGE