

NJIT



New Jersey's Science &
Technology University

THE EDGE IN KNOWLEDGE

Agenda

- Enrollment
- Middle States Self Study
- Higher Education Capital Bond Submission
- Campus Gateway Project/Greek Village
- Central King Building
- Learning Communities
- Shared Governance Steering Committee
- Faculty Separation Incentive Program
- UMDNJ Advisory Committee

2011 Fall Enrollment Goal=9105 v. 9173 Enrolled as of 9/2/11

		Readmit	Transfer	Continu- ing	Non- Matric	New Graduate	First-Time Freshmen	Totals	+/- 2010 Final
Grad	Full Time	7		752	21	616		1396	
	Part Time	31	1	847	216	281		1376	
	Total	38	1	1599	237	897		2772	-53
UG	Full Time	70	460	3502	15		926	4973	
	Part Time	78	158	643	457		92	1428	
	Total	148	618	4145	472		1018	6401	299
Total Number of Students		186	619	5744	709	897	1018	9173	
	+/- 2010Final	15	101	-111	164	24	53		246

Updated Timeline: On Target

Task	Start	End
Submission of self-study design to Liaison	March 9, 2010	April 6, 2010
Working groups gather data/reports	April 1, 2010	January 1, 2011
Working groups draft and submit report to RASC	January 1, 2011	April 30, 2011
Working groups receive requests for revisions	April 30, 2011	May 31, 2011
Working groups submit final report	June 1, 2011	July 1, 2011
RASC drafts self study report	July 1, 2011	September 6, 2011
Campus community reviews draft	September 16, 2011	September 30 2011
NJIT governing board reviews draft	September 16, 2011	November 3, 2011
Draft is near final	October 1, 2011	October 10, 2011
Team chair receives finalized draft	October 11, 2011	October 12, 2011
Team chair visits	November 8, 2011	November 10, 2011
Self-study report finalized and sent to evaluation team	November 11, 2011	February 13, 2012
Evaluation team visit to NJIT	April 1, 2012	April 4, 2012

The Digital Archive: In Development

DIGITAL ARCHIVE


1 STANDARD 1

ITEM#	AUTHOR	TITLE	REFERENCE DETAILS (Location, Publisher, Date, etc.)
1	<u>Academic Analytics</u>	<u>"Faculty Scholarly Productivity Index"</u>	<u><i>The Chronicle of Higher Education</i> (2007). Web.</u>
2	<u>Altenkirch, Robert</u>	<u><i>Campus Gateway Project</i></u>	<u>Newark, NJ: NJIT, 2006. Web.</u>
3	<u>Altenkirch, Robert</u>	<u><i>Landscape Master Plan</i></u>	<u>Newark: NJIT, 2005. Web</u>
4	<u>Altenkirch, Robert</u>	<u><i>NJIT Strategic Plan: 2004-2010</i></u>	<u>Newark: NJIT, 2004. Web.</u>
5	<u>Altenkirch, Robert</u>	<u><i>NJIT Strategic Plan 2010-2015</i></u>	<u>Newark: NJIT, 2010. Web.</u>
6	<u>Altenkirch, Robert</u>	<u><i>The NJIT ViSTa Strategic Planning Model</i></u>	<u>Newark: NJIT, 2002. Web.</u>
7	<u>Altenkirch, Robert</u>	<u><i>Update on Campus and Neighborhood Enhancements</i></u>	<u>Newark: NJIT, April 2008.</u>
8	<u>Bishop, Ed, Kathy Kelly, David</u>	<u><i>Project Orbit</i></u>	<u>Newark: NJIT, 2010. Web</u>

Process of Gathering Evidence

- What is our mission, how has it driven our actions, and **how do we assess** those actions in terms of mission fulfillment?
- What is the level of mission **penetration and consistency**?
- Are the resources available **now** to support mission fulfillment?
- What plans are in place to support mission fulfillment **in the future**?

Preliminary Visit of the Team Chair



Rensselaer

RENSSELAER POLYTECHNIC INSTITUTE - TROY, NY, USA

why not change the world?


[about rpi](#) | [academics](#) | [research](#) | [student life](#) | [admissions](#) | [news](#) | [tour](#)

Office of the Provost

- Provost's Profile
- Administration
- Graduate Ed
- Undergraduate Ed
- Entrepreneurship
- Institute Diversity

Dr. Robert E. Palazzo

Palazzo joined Rensselaer in 2002 and has served as the Director of the Center for Biotechnology and Interdisciplinary Studies at Rensselaer, as Professor and Chair of Biology at Rensselaer, and as a research scientist for the Wadsworth Center with the New York State Department of Health. His previous experience includes visiting professor at Harvard University Medical School, and a variety of roles with the University of Kansas where he Chaired the Department of Physiology and Cell Biology and served as Professor for the Department of Molecular Biosciences. Prior to his work in Kansas, Palazzo was as an assistant scientist/principal investigator at the Marine Biological Laboratory in Woods Hole, Massachusetts and conducted four years of post doctorate research at the University of Virginia's biology department. An active contributor to his field, Palazzo has served as the President of the Federation of American Societies for Experimental Biology (FASEB) which represents 22 basic biomedical research societies and more than 90,000 scientists. He served as Chair of the Science Advisory Council and as ex officio member of the Board of Trustees for the Marine Biological Laboratory. He has also served as a panelist or as member of various committees for a variety of organizations throughout his career, including the American Society of Biochemistry and Molecular Biology (ASBMB), the American Society for Cell Biology (ASCB), the Marine Biological Laboratory (MBL), the National Cancer Institute (NCI), the National Science Foundation (NSF), and the National Institutes of Health (NIH). Palazzo served as an editorial board member of *Biology of the Cell* for five years and spent seven years on the editorial board of *Cell Motility and the Cytoskeleton*. Palazzo's honors include a Junior Faculty Research Award from the American Cancer Society, a National Research Service Award from the NIH, and a number of fellowships. He is a member of many professional societies, such as American Association for the Advancement of Science, American Society for Biochemistry and Molecular Biology, and the American Society for Cell Biology.

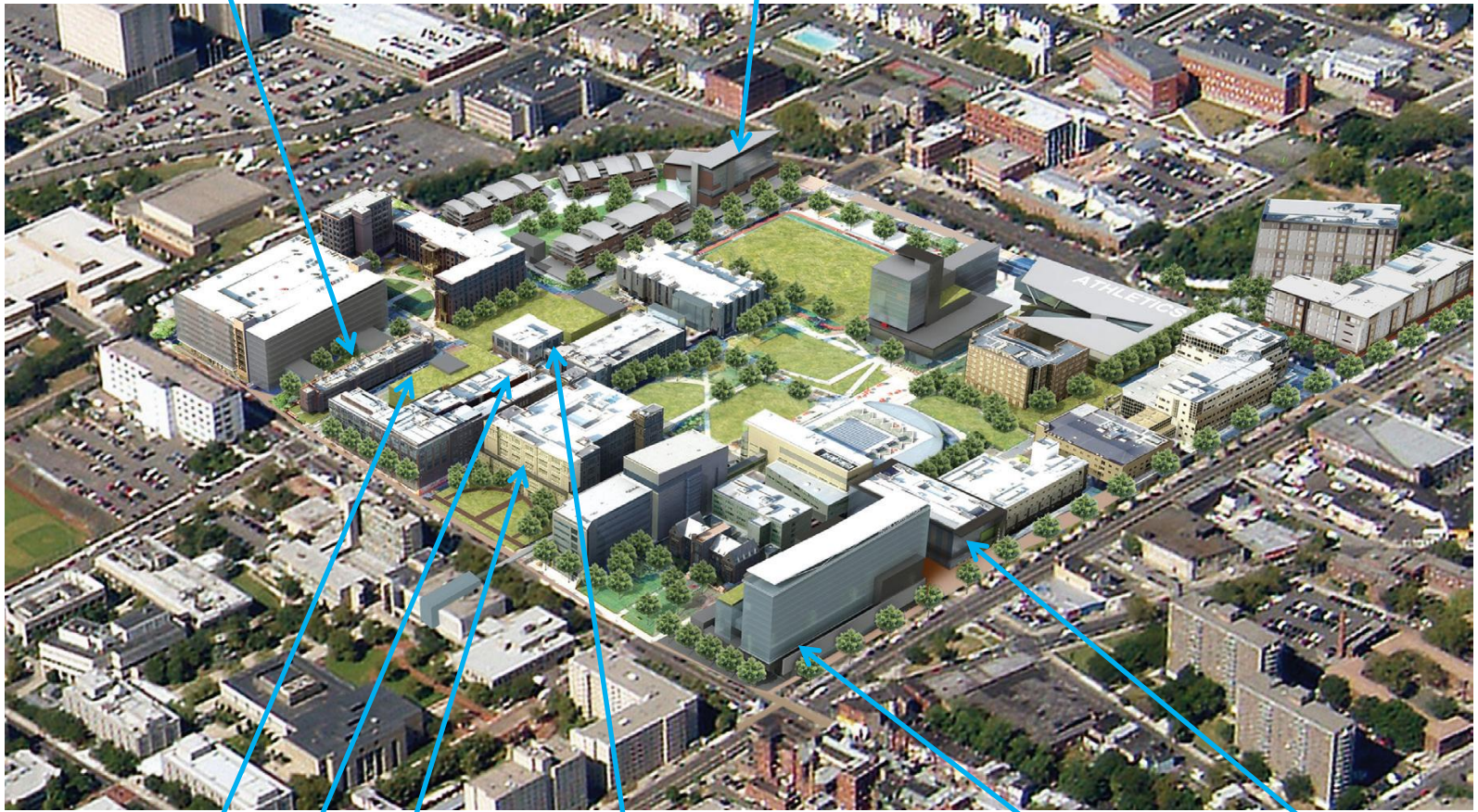


<u>Priority</u>	<u>Project Title</u>	<u>Project Budget</u>	<u>Cum Budget</u>
1	Discovery Hall and Learning Complex	76,000,000	76,000,000
2	Engagement Center for Science, Technology, Engineering, Arts, and Mathematics (STEAM)	27,500,000	103,500,000
3	Integrative Life Sciences and Engineering Center	11,100,000	114,600,000
4	Land Acquisition	6,000,000	120,600,000
5	Knowledge Services Center	18,000,000	138,600,000
6	Smart Classroom and Laboratory Technology	10,000,000	148,600,000
7	Architecture, Art, and Design Studio Facility	33,000,000	181,600,000
8	Student Academic Success Center	6,250,000	187,850,000
9	Laboratory Facility Improvements	21,000,000	208,850,000
10	Electrical and Computer Engineering Facility Addition	6,900,000	215,750,000
11	Integrative Nanofabrication Center	9,600,000	225,350,000
		<u>225,350,000</u>	

#3

#2

#6&9 Throughout
Classrooms and Labs



#7

#8

#1

#10&11

#4

#5



Greek Village Update

Prepared for the Joint Meeting of the Board of Trustees' Building and Grounds & Audit and Finance Committees

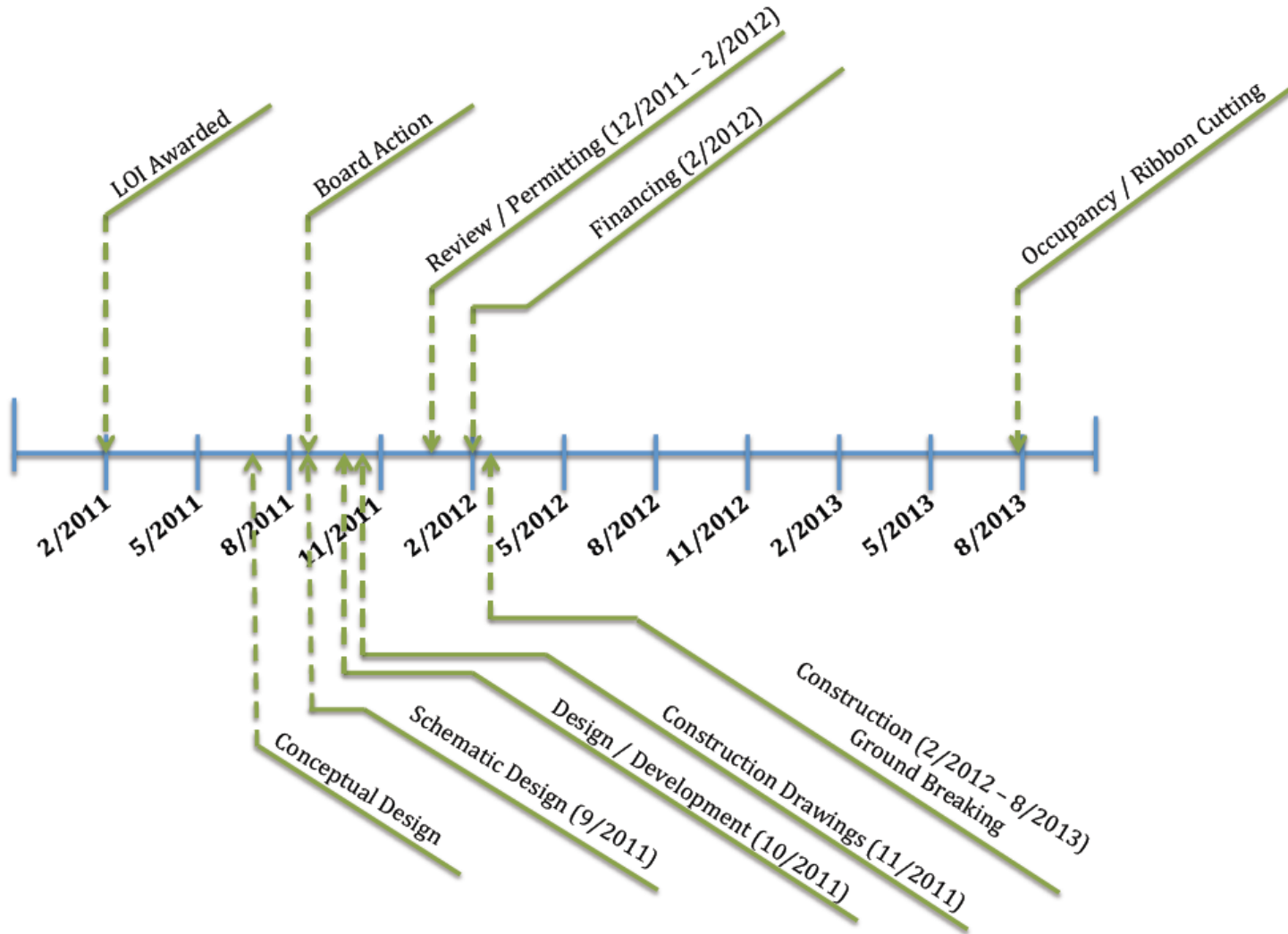
Greek House – Front Elevation



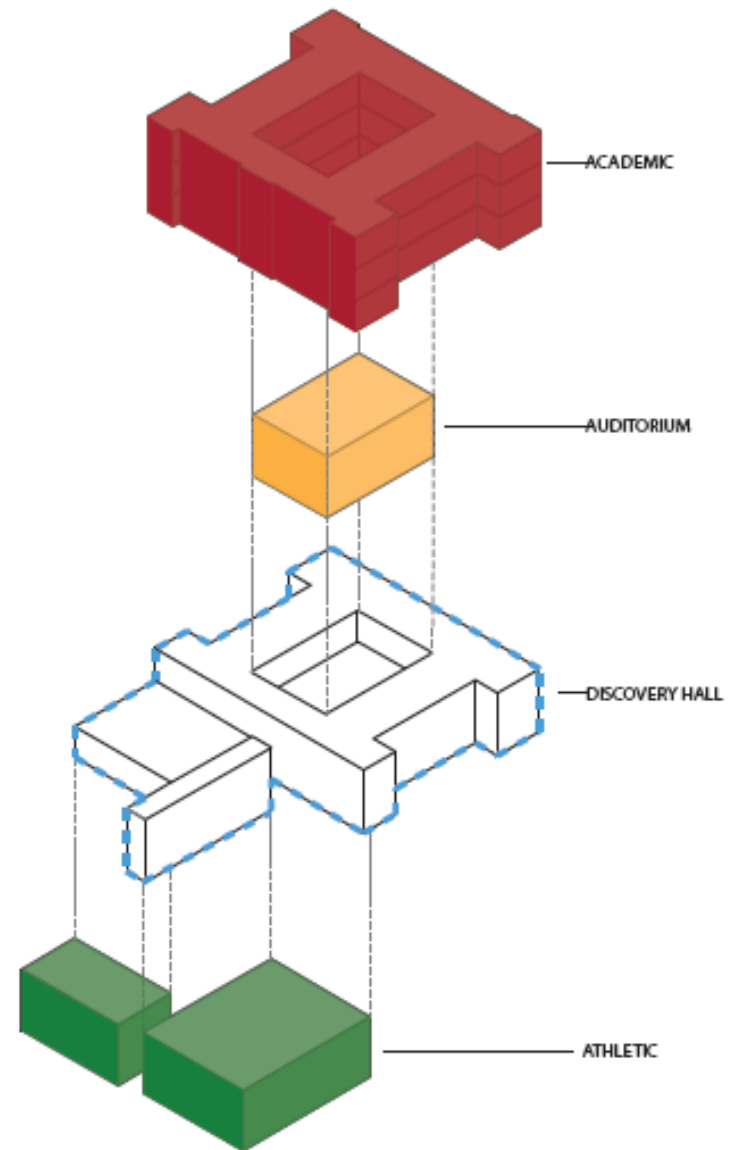
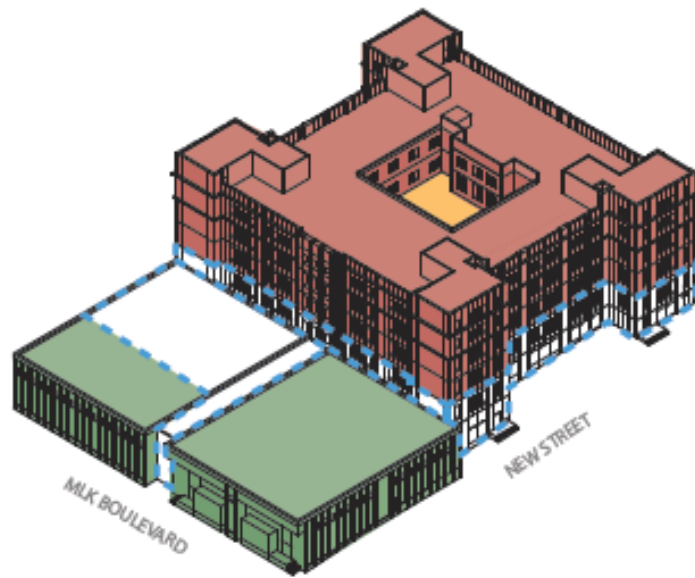
Dorman Honors College – Front Elevation



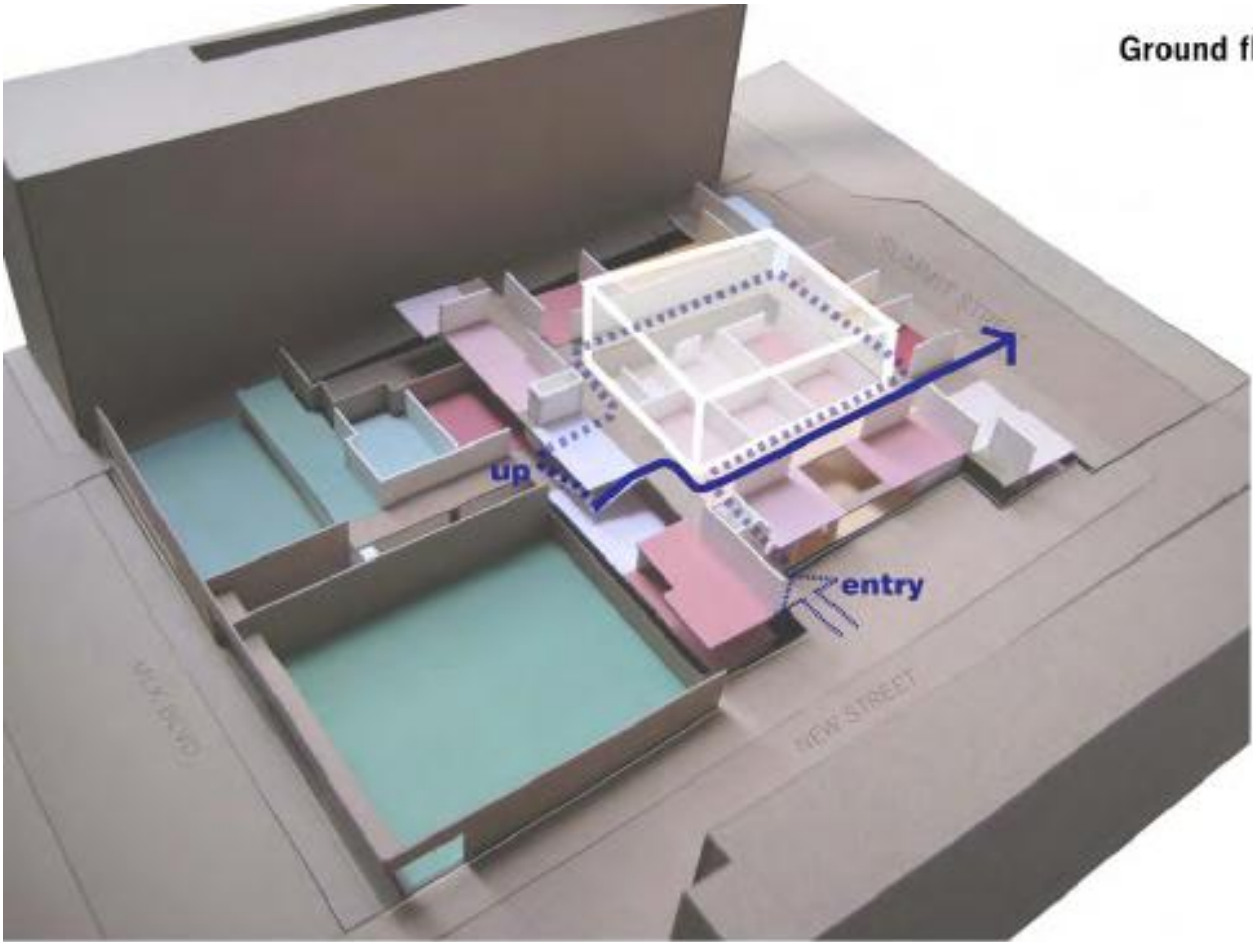
Project Timeline

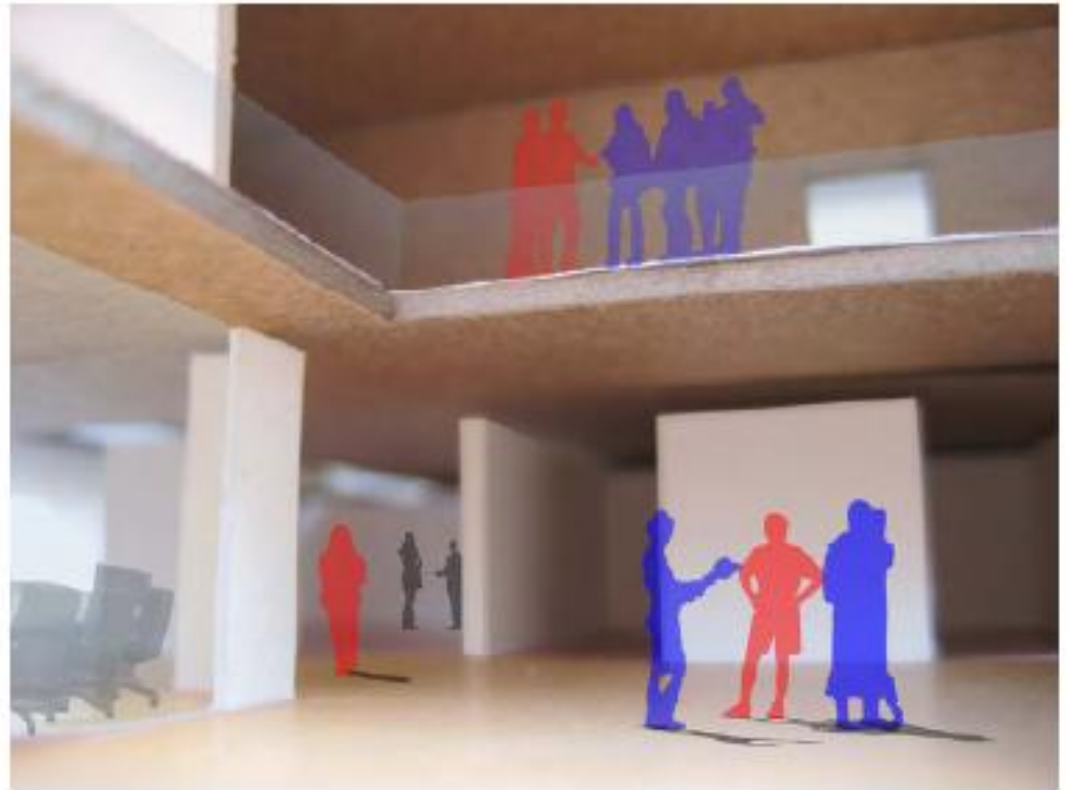


Program Organization



Ground floor and 1st floor Circulation





NJIT

New Jersey's Science & Technology University

THE EDGE IN KNOWLEDGE



NJIT

New Jersey's Science & Technology University

THE EDGE IN KNOWLEDGE

Community Connections

- About
- Our Community
- Active Learning Resources
- News & Events

Community Connections

[Home](#) > [Community Connections](#)

As students transition to university life, their experience is more likely to be positive and successful if they get the support they need. Learning Communities engage students within a network of faculty, advisors, and peer mentors focused on facilitating this transition and enhancing their learning experience.

In-person and interactive social networking allows students to communicate and learn with each other and their professors in a professional yet fun way. Students will be introduced to their teams before the start of their first semester. With the support of team affiliation in their first year, students will begin navigation along an academic timeline to graduation. Opportunities for research and service learning projects embedded in this timeline will give greater purpose and understanding to their educational experience.

Your Community Connection will help you transition to university life at NJIT, providing the support you need to be successful!

Learn Together, Connect for Life



Contact

Office of the Provost

Community Connections

382 Fenster Hall

[973-996-3240](tel:973-996-3240)

Important Links

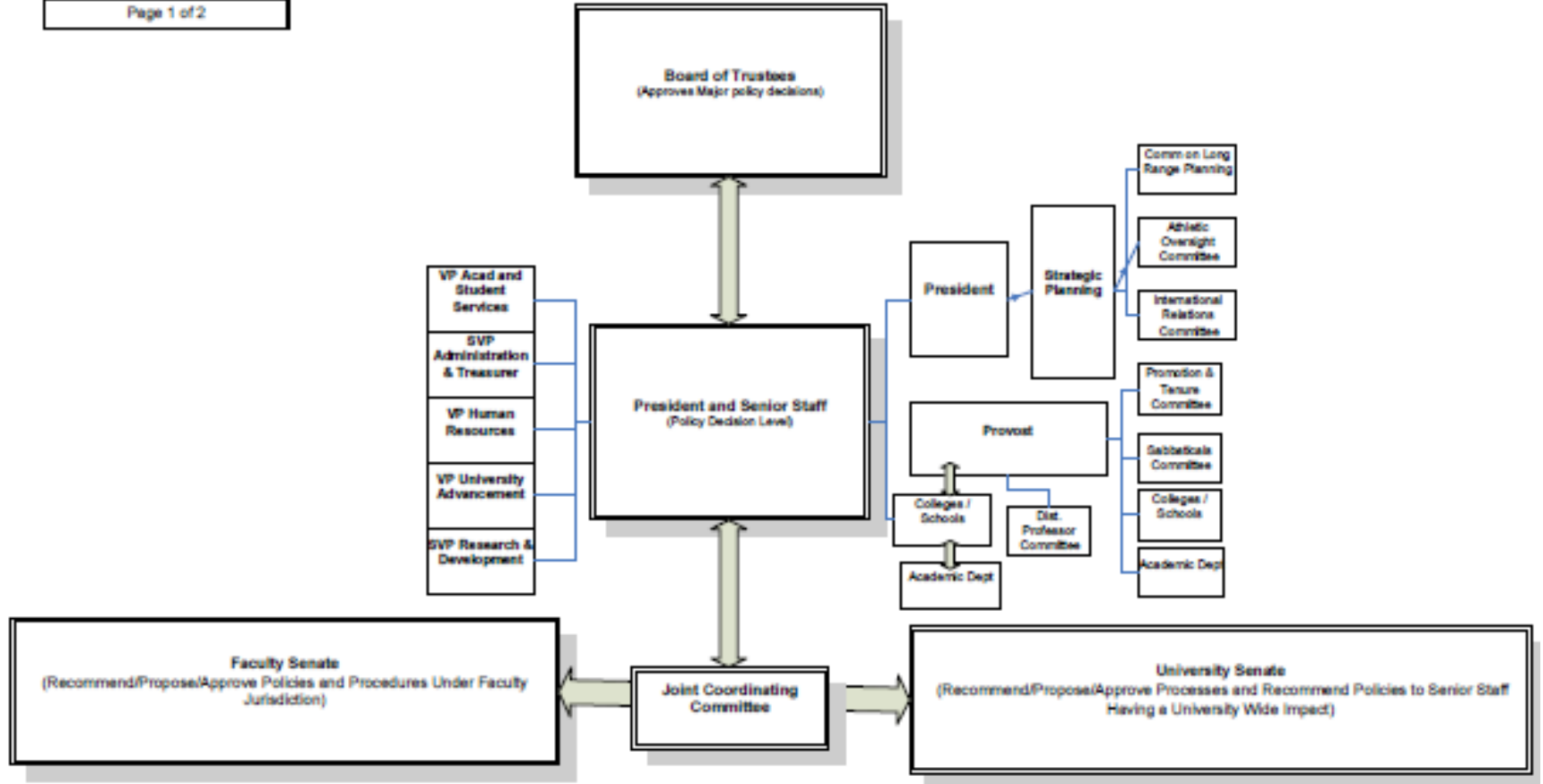
- [Office of the Provost](#)
- [Academic Colleges & Departments](#)
- [Center for Academic and Professional Enrichment](#)
- [Center for First-Year Students](#)
- [Center for Counseling and Psychological Services \(C-CAPS\)](#)
- [Campus Life](#)
- [Student Activities & Organizations](#)

Upcoming Events

[For Students](#)

[For Faculty/Advisors](#)

[For Peer Mentors](#)



Continued on 2nd Page

