

NJIT



New Jersey's Science &
Technology University

THE EDGE IN KNOWLEDGE

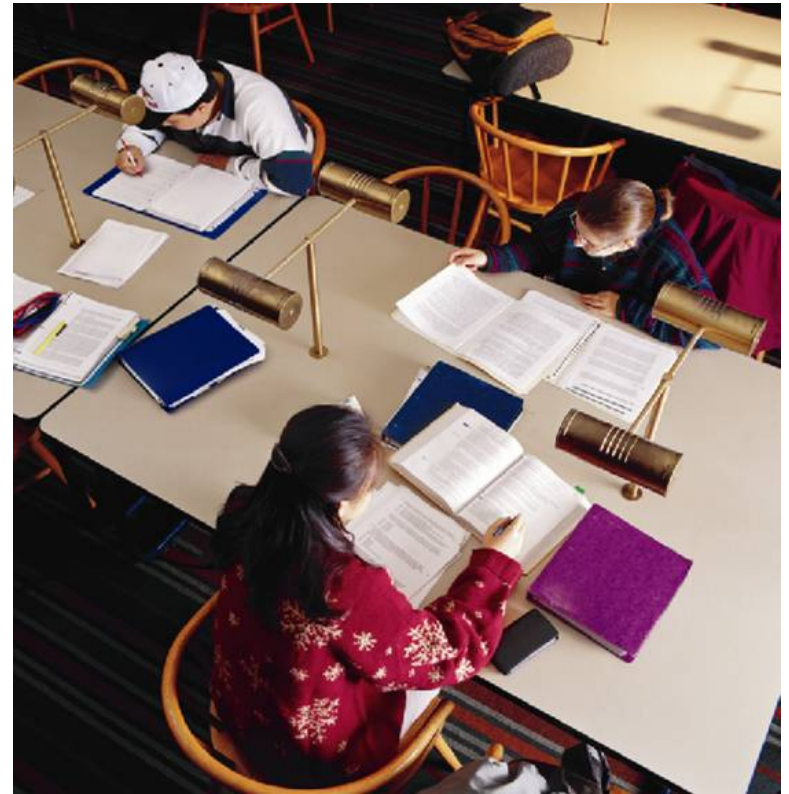
National Survey of Student Engagement

Department of Institutional Research and
Planning

December 2006

Why a national survey?

- Refocus conversations about undergraduate quality to what matters most
- Enhance institutional improvement efforts
- Foster comparative activity
- Inform accountability
- Provide systematic national data on “good educational practices”



NSSE 2006 Scope and Response Rate

- NSSE 2006 involved 557 schools and over 300,000 first-year and senior students
- NSSE overall response rate: 34%
- Selected peers' response rate: 33%
- Carnegie peers' response rate: 31%
- **NJIT's response rate: 40%**

Active and Collaborative Learning

For first-year students, NJIT outperforms our selected peers, our Carnegie peers, and the national NSSE school sample in Active and Collaborative Learning.

For seniors, NJIT outperforms our selected peers and our Carnegie peers.

Students learn more when they are intensely involved in their education and asked to think about what they are learning in different settings. Collaborating with others in solving problems or mastering difficult material prepares students for the messy, unscripted problems they will encounter daily during and after college.

Active and Collaborative Learning

- **Asked questions in class or contributed to class discussions** (high performing area)
- **Made a class presentation** (high performing area)
- **Worked with other students on projects during class** (high performing area)
- Worked with classmates outside of class to prepare class assignments
- Tutored or taught other students
- Participated in a community-based project as part of a regular course
- Discussed ideas from your readings or classes with others outside of class (students, family members, co-workers, etc.)

Student-Faculty Interaction

For first-year students, NJIT outperforms our selected peers and our Carnegie peers in Student-Faculty Interaction.

For seniors, NJIT underperforms the national NSSE school sample.

Students learn firsthand how experts think about and solve practical problems by interacting with faculty members inside and outside the classroom. As a result, their teachers become role models, mentors, and guides for continuous, life-long learning.

Student-Faculty Interaction

- Discussed grades or assignments with an instructor
- Talked about career plans with a faculty member or advisor
- **Discussed ideas from your readings or classes with faculty members outside of class** (high performing area)
- Worked with faculty members on activities other than coursework (committees, orientation, student-life activities, etc.)
- **Received prompt written or oral feedback from faculty on your academic performance** (low performing area)
- Worked with a faculty member on a research project outside of course or program requirements

Supportive Campus Environment

For seniors, NJIT underperforms our selected peers, our Carnegie peers, and national NSSE school sample in Supportive Campus Environment.

Students perform better and are more satisfied at colleges that are committed to their success and cultivate positive working and social relations among different groups on campus.

Supportive Campus Environment

- **Campus environment provides the support you need to help you succeed academically** (low performing area)
- Campus environment helps you cope with your non-academic responsibilities (work, family, etc.)
- Campus environment provides the support you need to thrive socially
- Quality of relationships with other students
- **Quality of relationships with faculty members** (low performing area)
- Quality of relationships with administrative personnel and offices

Convergence between NSSE 2006 & Student Satisfaction Spring 2006

- Overall experience:
 - For both Student Satisfaction and NSSE, 74% of students rated their experience as “good” or “excellent”
- Starting over
 - For both Student Satisfaction and NSSE, 69% of students said they would probably or definitely choose NJIT again
- For these two questions, we underperform our selected peers, our Carnegie peers, and the national NSSE school sample (approx. 85% for both questions)

Appendix

List of selected peers

Brigham Young University

Clarkson University

Clemson University

Colorado School of Mines

Indiana University-Purdue University-Indianapolis

Michigan Technological University

Old Dominion University

Polytechnic University

South Dakota State University

The University of Texas at Dallas

The University of Texas at El Paso

University of Missouri-Rolla

Utah State University

Appendix

List of Carnegie peers

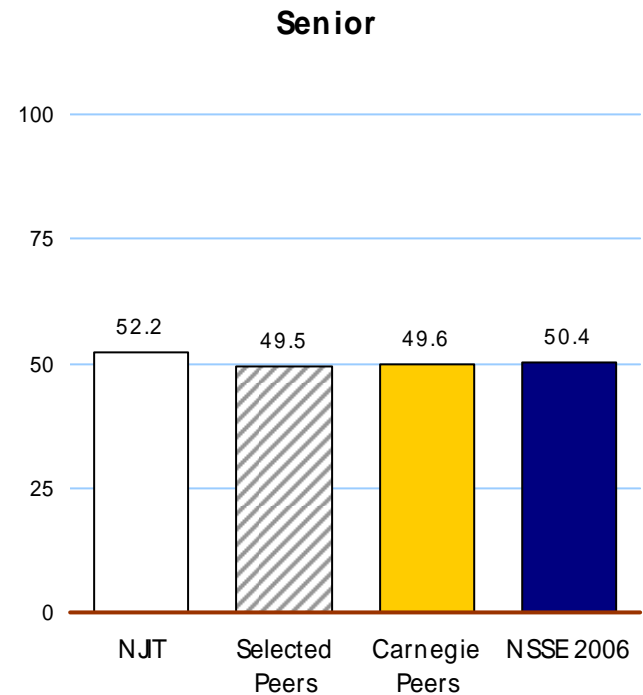
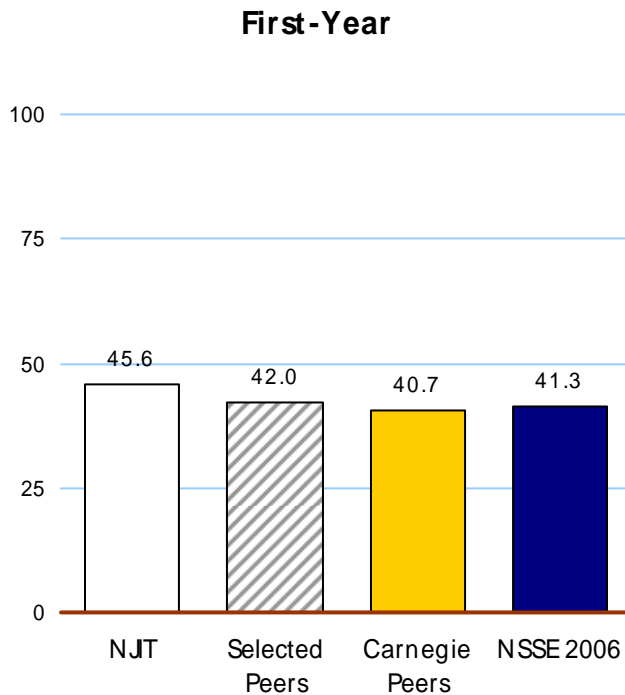
Baylor University
Central Michigan University
Clark University
Clarkson University
Cleveland State University
DePaul University
East Carolina University
East Tennessee State
University
George Mason University
Hofstra University
Idaho State University
Indiana University-Purdue
University-Indianapolis
Michigan Technological
University
Middle Tennessee State
University

New Mexico Institute of
Mining and Technology
Pace University
Pepperdine University
Polytechnic University
Seton Hall University
South Dakota State
University
St. John's University-New
York
Tennessee State University
The New School
The University of Montana
The University of Texas at
Dallas
The University of Texas at El
Paso
University of Arkansas at
Little Rock

University of Colorado at
Denver & Health
Sciences Center
University of Hartford
University of Missouri-Kansas
City
University of Missouri-Rolla
University of Nevada-Las
Vegas
University of Puerto Rico-Rio
Piedras Campus
University of San Francisco
University of South Alabama
University of South Dakota
Widener University
Worcester Polytechnic
Institute
Wright State University

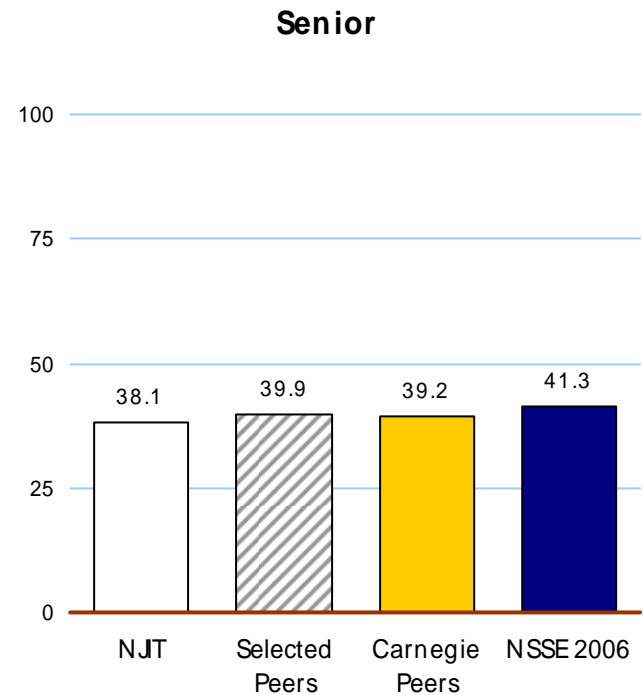
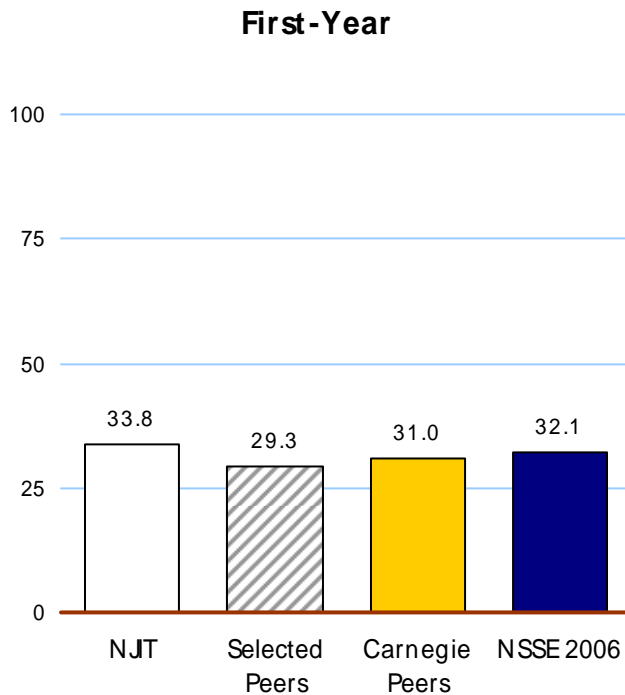
Appendix

Active and Collaborative Learning



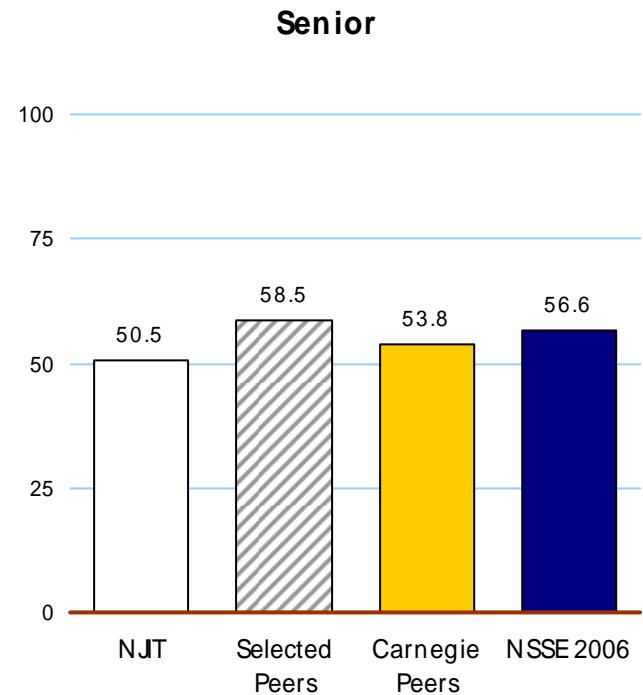
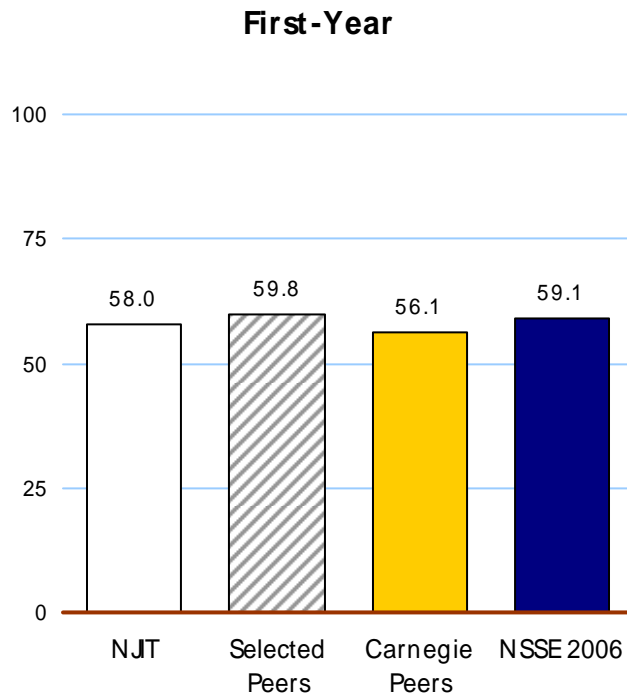
Appendix

Student-Faculty Interaction



Appendix

Supportive Campus Environment



NJIT

THE EDGE IN KNOWLEDGE