



THE WEBINAR WILL BEGIN SHORTLY

MAPPING FOR SUCCESS: USING GIS & REMOTE SENSING TO INVENTORY & PRIORITIZE YOUR BROWNFIELDS

APRIL 5, 2022
10:00 – 11:00 AM



Sean Vroom

Director

NJ Brownfields Assistance Center @NJIT



Mehmet Secilmis, GISP

Senior Global Account Manager
AEC & Environmental, Esri



Amy Ferdinand, GISP

Director of Environmental Health and Safety
Montclair State Univ .



MAPPING FOR SUCCESS: USING GIS & REMOTE SENSING TO INVENTORY & PRIORITIZE YOUR BROWNFIELDS

APRIL 5, 2022
10:00 – 11:00 AM



Sean Vroom

Director

NJ Brownfields Assistance Center @NJIT



Mehmet Secilmis, GISP

Senior Global Account Manager
AEC & Environmental, Esri



Amy Ferdinand, GISP

Director of Environmental Health and Safety
Montclair State Univ .

Housekeeping



- ❖ All will be muted during presentation.
- ❖ Submit questions via Q&A to “All”
- ❖ All slides and the recorded webinar will be made available on the NJ Brownfields Assistance Center’s website

Webinar Agenda



- ❖ NJ Brownfields Assistance Center @ NJIT
- ❖ How GIS & RS are used in Brownfields Inventory and Prioritization
- ❖ Use Cases and Available Resources
- ❖ Q & A



**NJ Brownfields
Assistance Center**

@NJIT

New Jersey Institute
of Technology



Mission

- ❖ to educate and engage communities around brownfield issues
- ❖ to provide **free** technical assistance and resources to county and municipal governments, and nonprofits challenged by former industrial and commercial properties
- ❖ to develop tools, strategies, and resources; create partnerships; and provide subject matter experts to brownfields-challenged communities



The NJIT Team



**planners, engineers,
environmental scientists, and social scientists
who have helped hundreds of communities
throughout the country**

How can we help you?

Resource Center



[**njit.edu/njbrownfields**](http://njit.edu/njbrownfields)



[**@njbrownfields**](https://twitter.com/njbrownfields)



[**www.linkedin.com/company/njbrownfields**](http://www.linkedin.com/company/njbrownfields)



How can we help you?

Brownfields Help Desk



973-596-6415



njbrownfields@njit.edu

- ❖ Answers to quick questions
- ❖ Conversations about brownfield challenges
- ❖ Actions plans/next steps





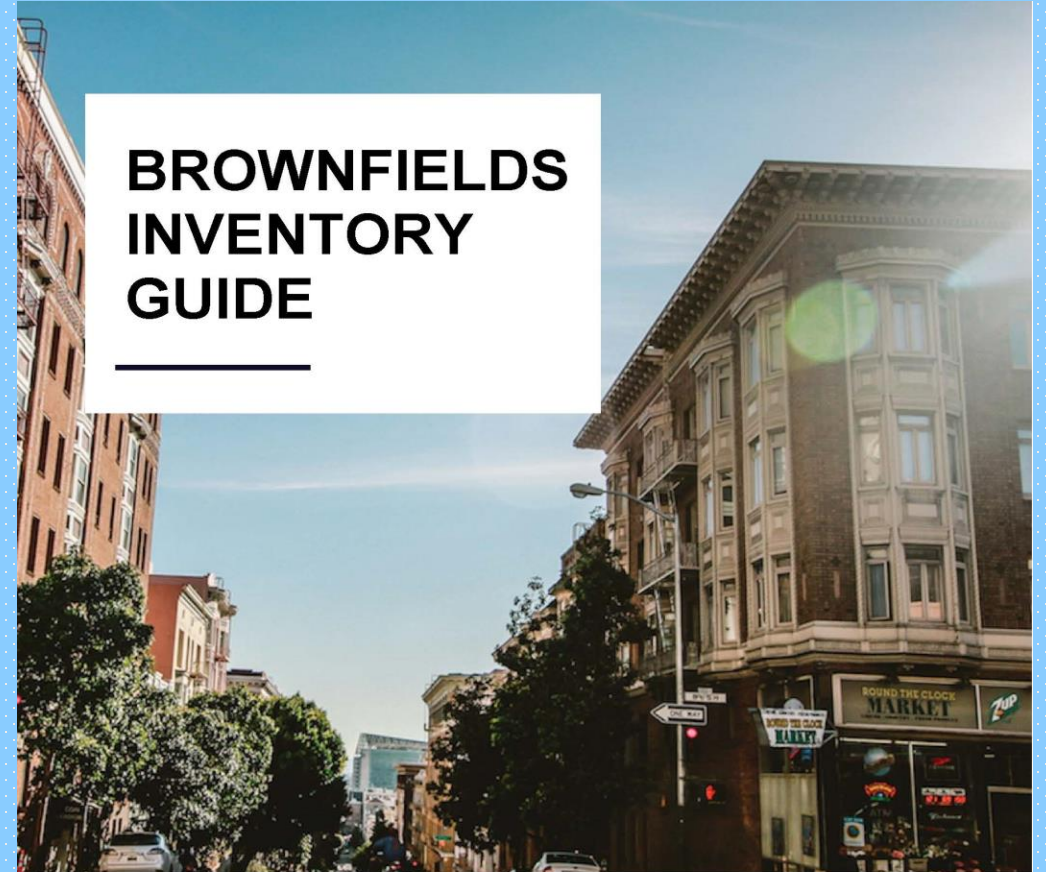
<https://www.njit.edu/njbrownfields>

Resources

↳
Topical Brownfields Guidance

↳
Brownfields Inventory Guide

BROWNFIELDS INVENTORY GUIDE



NJ BROWNFIELDS ASSISTANCE CENTER @ NJIT

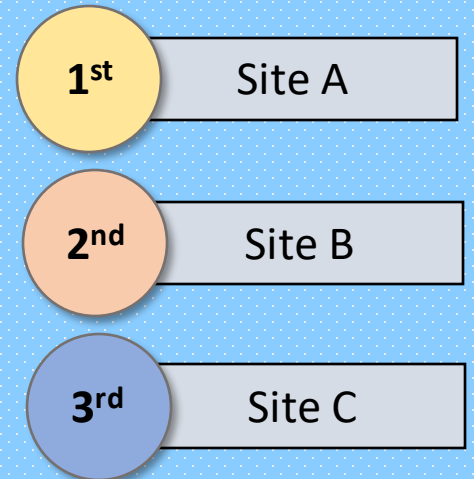
NJIT
New Jersey Institute
of Technology



WHY IS BROWNFIELDS INVENTORY AND PRIORITIZATION IMPORTANT?



- ✓ Shows a Comprehensive Approach
- ✓ Helps When Pursuing Funding
- ✓ Focuses Project Goals



WHAT IS A BROWNFIELD?



NJ State Definition

*“any former or current **commercial** or **industrial** site that is currently **vacant** or **underutilized** and on which there has been, or there is **suspected** to have been, a **discharge** of a contaminant.”*

WHAT IS A BROWNFIELD?

Federal Definition

*“A brownfield is a property, the expansion, **redevelopment**, or reuse of which may be complicated by the presence or **potential presence** of a hazardous substance, pollutant, or **contaminant.**”*



Geographic Information Systems

A Definition of GIS

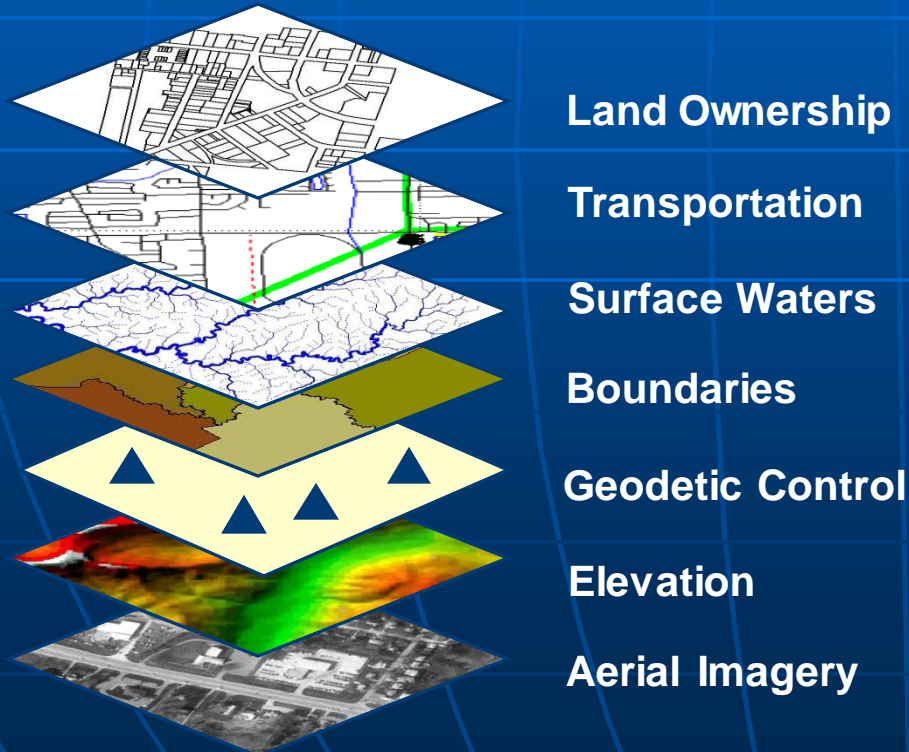
GIS is a *System* of computer software, hardware and data, and personnel to help manipulate, analyze and present information that is tied to a spatial location –

- *spatial location* – usually a geographic location
- *information* – visualization of analysis of data
- *system* – linking software, hardware, data
- *personnel* – a thinking explorer who is key to the power of GIS

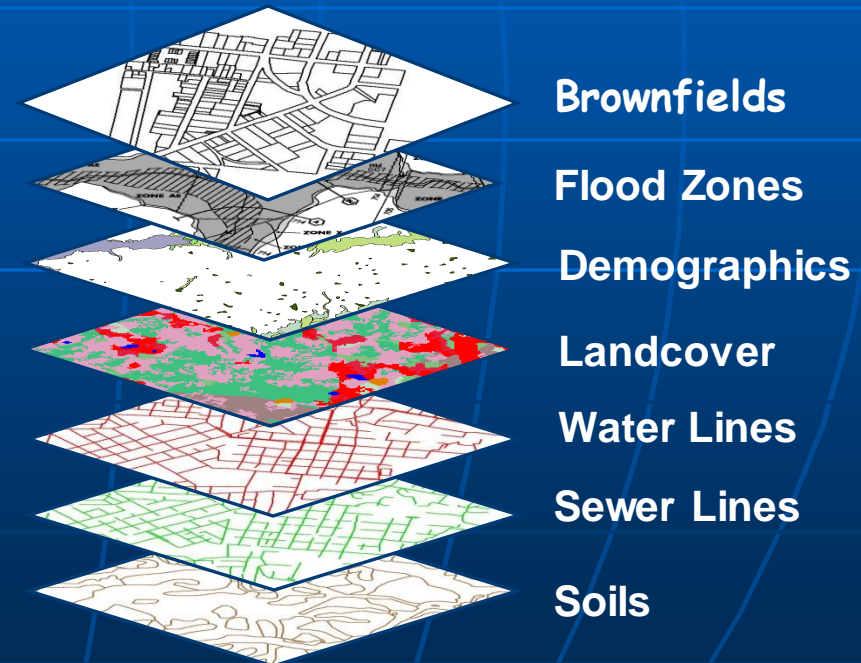
Relationships Among Data

Build Once, Use Many Times

Framework Data



Other Thematic Data



What Is a GIS?

A System for Managing, Sharing and Applying Geographic Information



GIS

Applied in Many Fields

Economic Development

Pollution Nature Conservation **Health**

Energy Transparent Government

Natural Resources Climate Change

National Security Science & Technology

Business **Environment** Water Resources

Agriculture Social Conflicts

Urbanization & Development

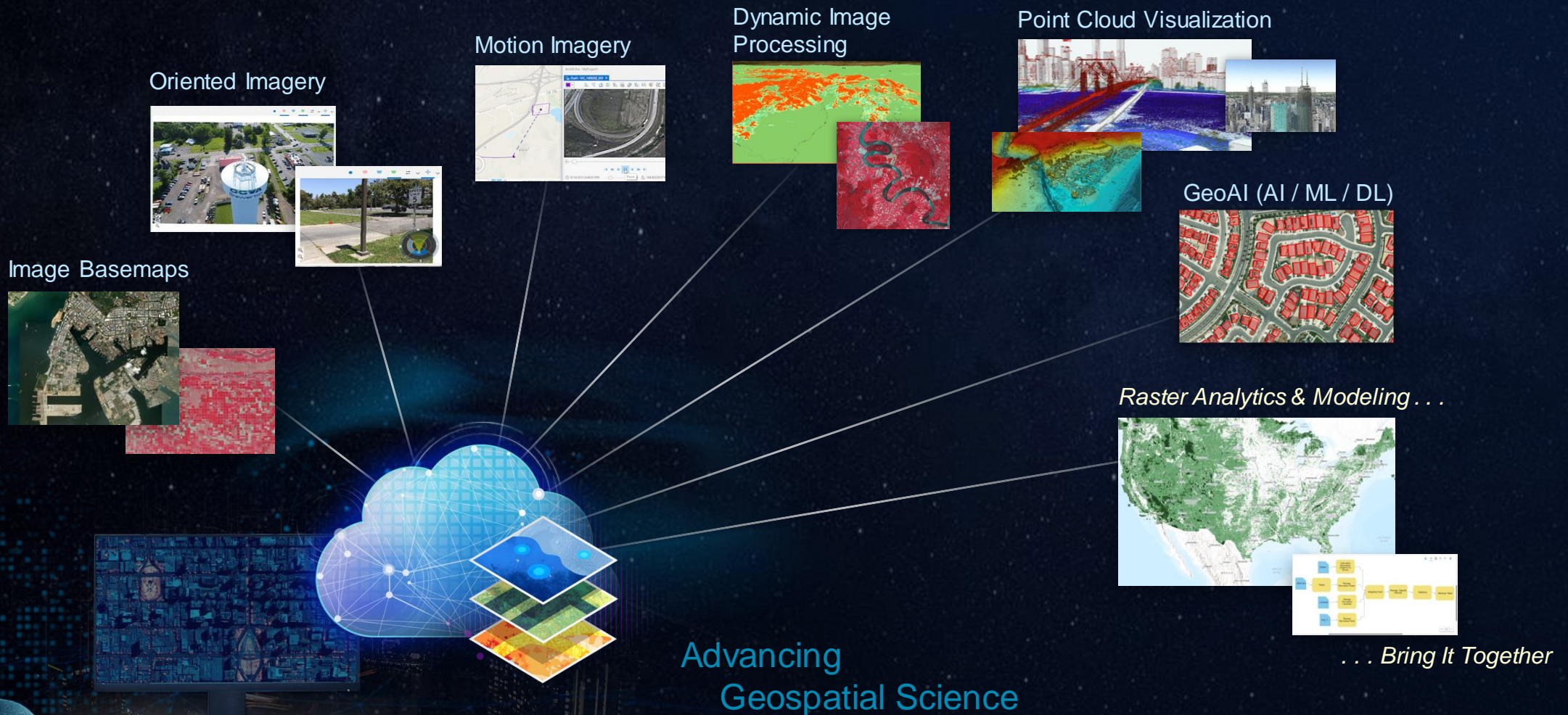
Natural Disasters

Infrastructure



Imagery and Remote Sensing Are Enriching GIS

Transforming All Aspects of Geospatial Work



. . . Bring It Together

Integrating Massive & Timely Content

Map Production from Imagery



Field Operations

Location-enable all phases of field work with ArcGIS apps



Field Operations & Data Collection

Location-Enabling All Aspects of Field Work

Specialized Data Collection

Geocentric
Data Collection

Field Work
Management

Operational
Awareness



Connecting & Transforming Mobile Workflows

ArcGIS Licenses

Personal Use License

Non-profit License

Commercial License


Nonprofit

OverviewFocus Areas▼EventsCommunity

Nonprofit Program


Low-cost access to GIS tools

The Esri Nonprofit Organization Program provides special, low-cost pricing for GIS software and resources to help you advance your mission, achieve measurable impact, engage with communities, and advocate for your cause.




Software

From interactive maps to advanced analysis and rich multimedia storytelling tools, the Esri Nonprofit Organization Program provides significantly discounted, one-year term licenses for software products such as ArcGIS Online and ArcGIS Pro.




Data and content

ArcGIS Living Atlas of the World, the foremost collection of global geographic information, includes maps, apps, and data layers to support your work. Esri's in-house content team can help you source ready-to-use maps and layers to give more meaning to your data.




Training resources

In addition to e-Learning and self-paced courses, get discounts on instructor-led or private classes.



Consulting services

Esri Professional Services provides consulting support to help you get the most from your software. Available services include launch kits, health checks, and project delivery.



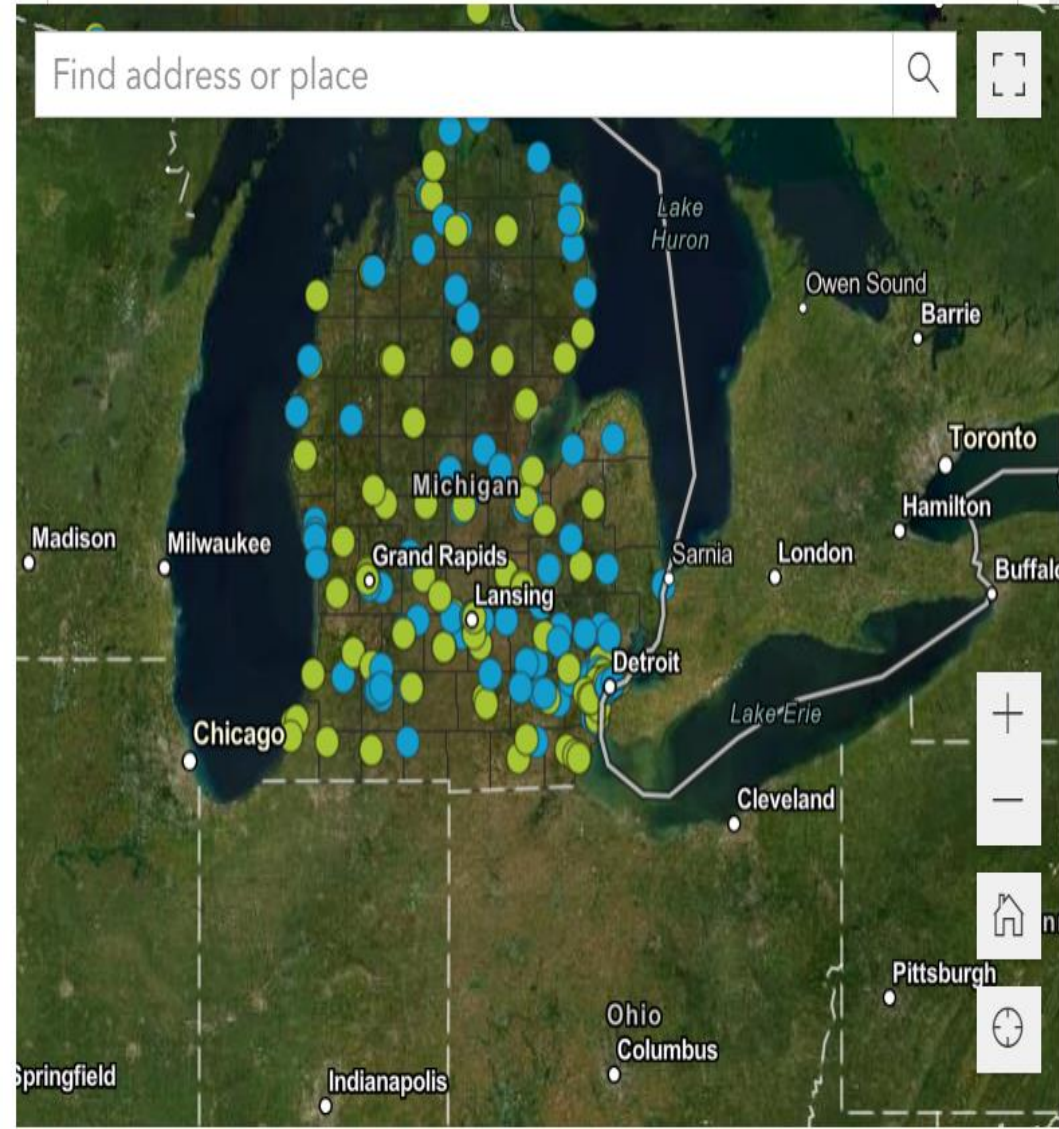
Esri Community

Connect, collaborate, and share experiences with GIS users across the globe.

● In Progress Project
 ● Completed Project

See All Projects on Map

Find address or place



Search by Project Name, City, or County



11112 Resort Road

Pleasant Lake (Jackson County)

[Read Project →](#)



122 Muskegon Avenue

Muskegon, City of (Muskegon County)

[Read Project →](#)



124 West Front Street

Traverse City, City of (Grand Traverse County)

[Read Project →](#)



303 East University Drive Redevelopment

Rochester, City of (Oakland County)

[Read Project →](#)



410 West Broadway

Mount Pleasant, City of (Isabella County)

[Read Project →](#)



615 Holdings Redevelopment

Kalamazoo, City of (Kalamazoo County)

[Read Project →](#)



917 East Main Redevelopment

[Read Project →](#)










Find address or place



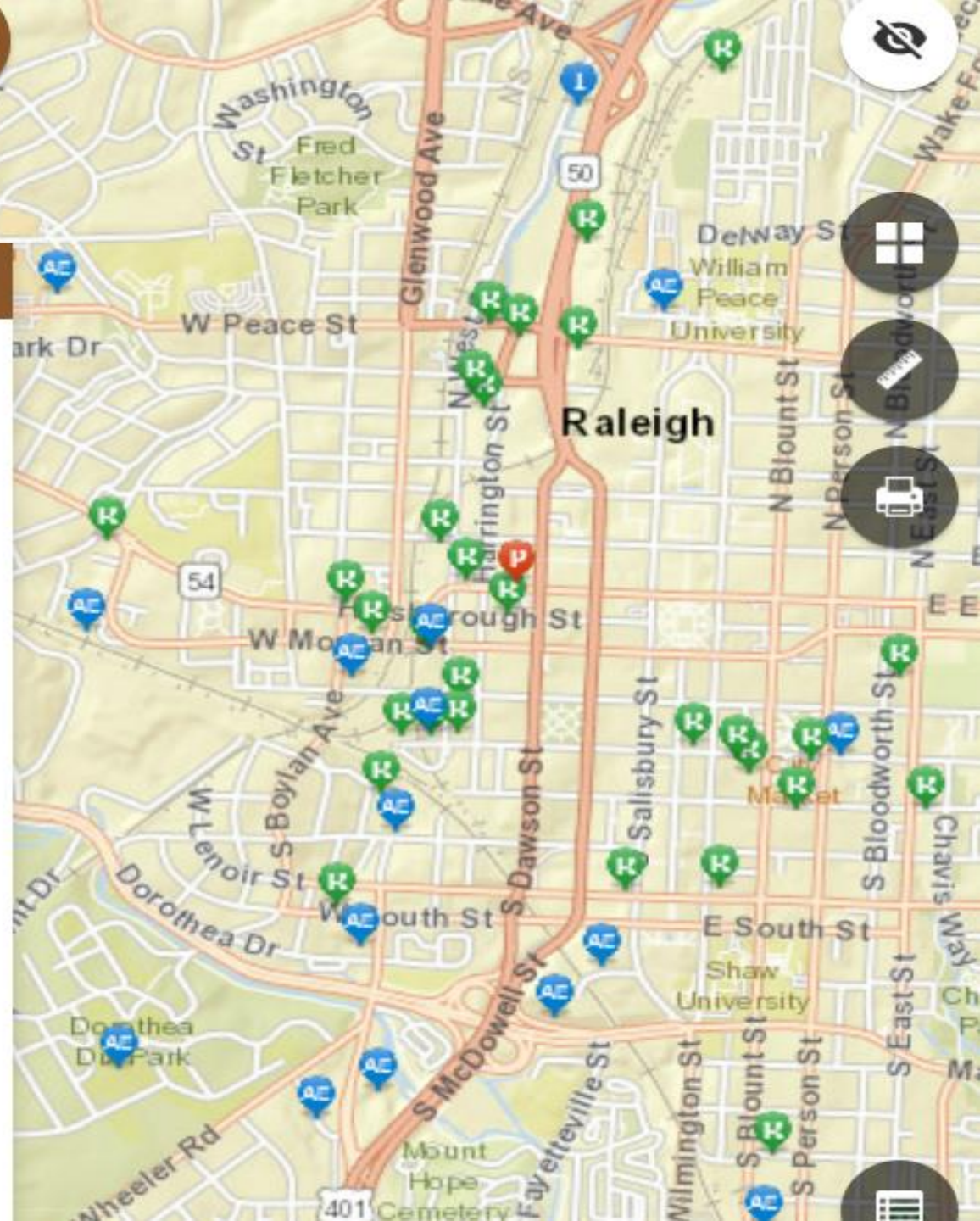
Legend



NC Brownfields - Locations

-  Recorded
-  RFR PC Complete
-  Complete
-  Active Eligible
-  Inactive Eligible
-  Pending
-  No Further Interest
-  Ineligible

NCBoundaryCounty



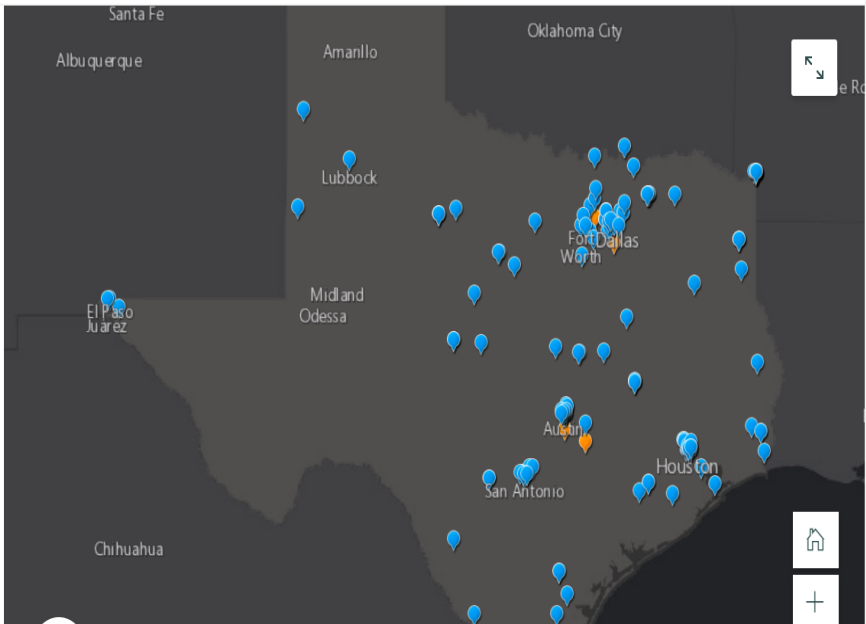


TCEQ Brownfields Program

TCEQ Brownfields Program sites are located in rural and urban communities throughout Texas as depicted in blue on this map. The orange points represent sites featured in this story map.

Who qualifies to enter the program?

Any governmental or quasi-governmental entity including corporations, councils of



TCEQ Brownfields Program

Lost Pines Art Center - Bastrop

Construction was completed in December 2016. The main building was repurposed into art galleries and studios as well as a local coffee shop, wine bistro, classrooms, and retail space. Demonstration areas and studios are now located in the silos.



Brownfield Land Register Toolkit

Thank you for using the Brownfield Land Register Toolkit.

By using this toolkit to supply information on brownfield land in your local area, you're helping to increase the amount of brownfield land which is available for development - ultimately protecting our precious greenspaces and countryside from development.

This toolkit aims to help people to tell their local planning authority about brownfield sites that could be developed, and to ensure they are included in the council's Brownfield Land Register and Land Supply dataset. This will increase the chances of these sites being developed, and take pressure off less appropriate places.

If vacant, what was its former use?

For example, housing, offices, industry and warehousing, community use, retailing, etc. Be as specific as you can, especially if it was the sort of use that may have led to any contamination of the land, eg petrol station, industrial units.

Type your answer here

979

Description of surrounding land uses

For example, housing, offices, industry and warehousing, community use, open / vacant land, parkland, etc. Details such as approximate heights of adjacent buildings, broad topography (is land flat or sloping) etc would be helpful.

Type your answer here

Image of the site

Please upload an image of the site, if you have one.

Select image file



Please provide the location of the brownfield site

Use the 'Find address or place' search bar in the map below to find the location of the brownfield site. Use the drawing tool in the top right hand corner to draw a line around the site. Remember to click the 'tick' button once you have finished using the tool.



Existing land use of site

Include general condition of existing buildings, eg derelict, sound, capable of conversion to housing).

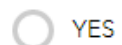
Type your answer here

Brownfield Tracker v1.46

An observation tool to identify, track, and monitor condition and utilization of sites of environmental concern in your neighborhood.

Have you enabled GPS Location Services on your mobile device?*

On your device, please turn on "Location Services" and also ensure that "Cellular Data" is ON.



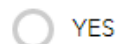
YES



NO - Then please switch on

I agree to conduct all Brownfield Tracking while remaining on sidewalks, public streets, and alleys for all site inspections.*

Please DO NOT Trespass! To participate you must agree you WILL NOT enter private property.



YES



NO is not an option

Brownfield Review Code

If you have received a Team or Individual Brownfield Tracker Code please enter it here. Otherwise, please continue.

Site Location*

Please identify the Site location for this Brownfield site review. Please ensure you are as near to subject site as possible when answering. **NOTE: Please check to make sure map identifies your correct site of interest and move map with finger or use + button to zoom and match site if it does not appear correct on the map. HINT:** The round button will take you back to

Brownfield Indicators

What (if any of these) do you see at the site? You may find examples of these types of sites in the [Brownfield Tracker Field Guide](#).



Fuel Pumps / Islands



Ground Water Monitoring Wells



Above Ground Storage Tanks (ASTs)



Remediation / Treatment System



Fill Ports or Vent Pipes



Vehicle Service Bays



Hydraulic Lifts (inside/outside)



Metal Drums / Liquids Storage



Stained Soil or Pavement



Distressed Vegetation



Chemical Signs or Storage



Gas / Petroleum Signage



Other Brownfield Creating Conditions Witnessed

Other Site Conditions

Do you see any of the following at the site?



Abandoned vehicles



Paved or gravel lot



Squatting or signs of trespass



Dumping, litter, or graffiti

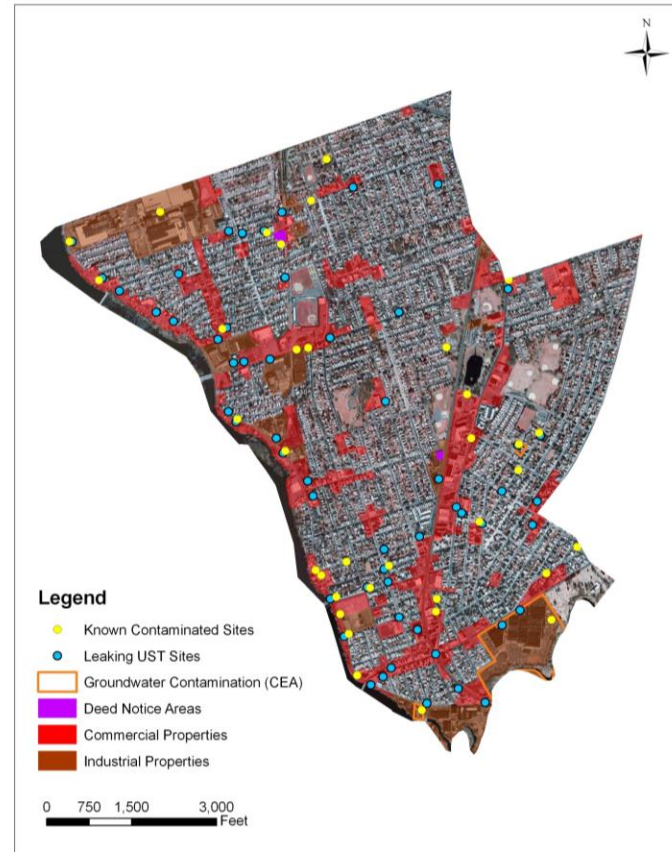
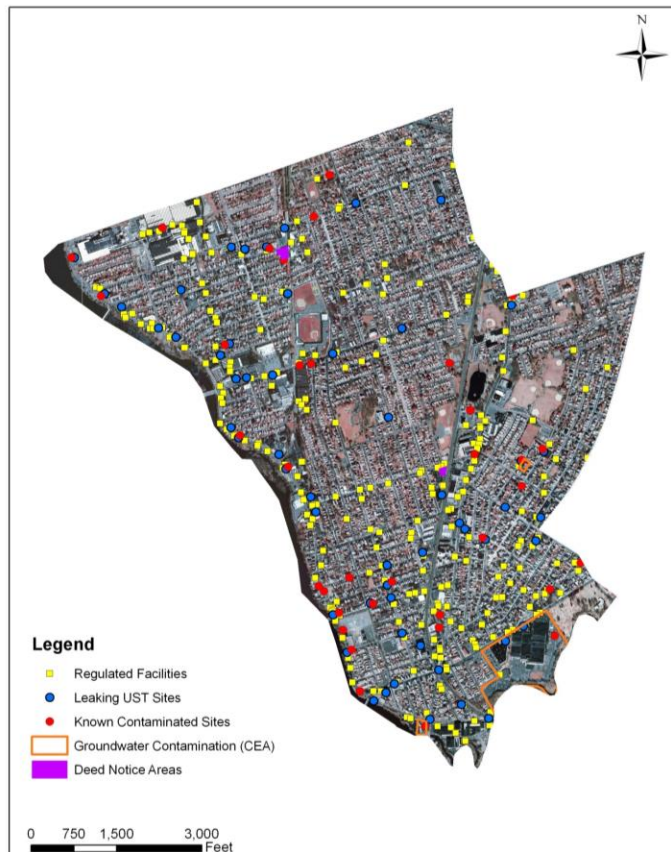


Stray domestic animals



Wild animals

City of Garfield, Bergen County, NJ Brownfield Inventory by Garfield Environmental Commission



Data layers were selected and clipped for Garfield

35 known contaminated sites (KCS)

3 groundwater contamination (CEA) sites

3 Deed Notice Areas

65 Underground Storage Tank (UST) contamination sites

307 Regulated facilities

Overlaid Commercial/Industrial zones

Obtained vacant/abandoned properties list from Garfield Building, Fire, Health, Public Works Departments and Redevelopment Agency

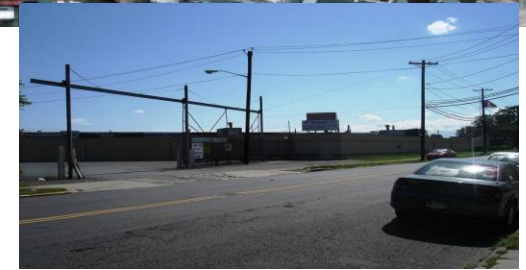
Field Visit

- ✓ Conducted a "**windshield survey**" of Garfield focusing on the data previously collected (three days)
- ✓ Identified sites of **vacant, abandoned, and underutilized** properties and took photographs (~250 photos)
- ✓ Obtained **occupancy** and current use information for 42 properties identified from Garfield tax assessor and fire departments

Data Review

- ✓ Reviewed the properties based on their use/occupancy and contamination information
- ✓ Screened the sites with brownfield definition and identified **15 properties** as potential brownfields
- ✓ Selected and clipped parcels that were potential brownfields
- ✓ Prepared a map using aerial photo as a base map and overlaid parcel boundary of potential brownfield properties

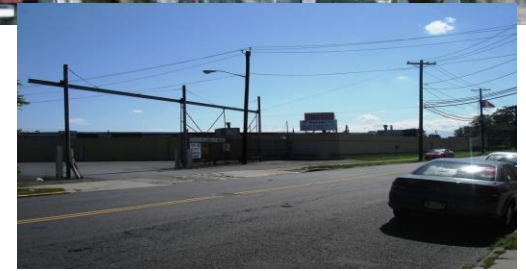
POTENTIAL BROWNFIELDS IN GARFIELD



Results

- ✓ Over 200 properties were cataloged
- ✓ 4 large brownfield properties were designated as redevelopment zones by Garfield Redevelopment Agency
- ✓ Some small properties were redeveloped independently
- ✓ Other brownfield properties identified for future redevelopment

Before and After



Wayback Imagery – Esri Living Atlas



Wayback 2014-02-20

40.881, -74.104

Esri, Maxar, Earthstar Geographics, GIS Community

Brownfields Prioritization Model Using GIS by HR Green

1) **Environmental Risk** – A defensible approach identifies:

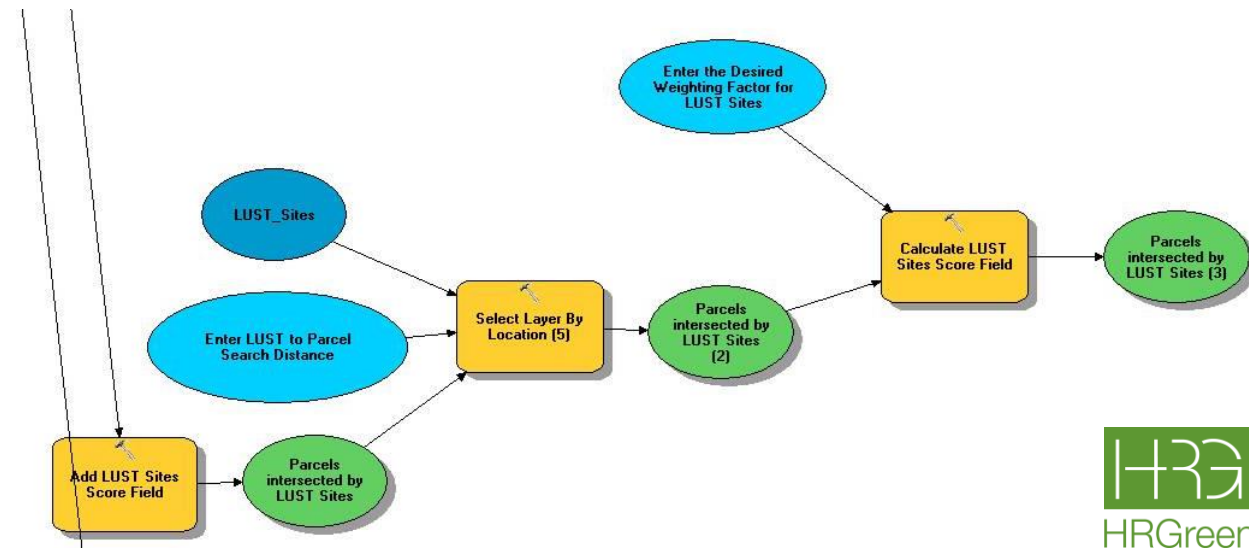
- i. environmental risk
- ii. available funding from the EPA to perform an environmental site assessment
- iii. how to move forward on clean-up.

2) **Redevelopment Potential** - Proximity to major transportation corridors, water service, and fiber optic networks are a few of the many redevelopment factors examined by a robust GIS model in generating each parcel's redevelopment score.

3) **Ground Truth** - The final part of a complete approach enlists the expertise of environmental professionals and local stakeholders.

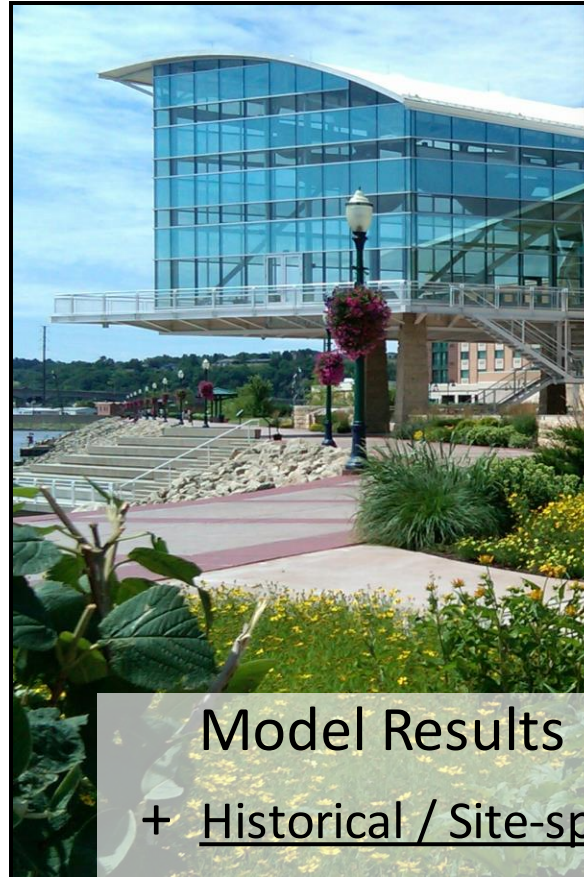
Use of GIS to Prioritize Brownfield Locations

- HR Green has incorporated GIS analysis into a comprehensive process that helps client communities select sites for brownfield assessment, cleanup, and reuse.
- GIS modeling is employed to perform customizable, repeatable analyses that can adapt to varying data availability and client priorities.



Use of GIS to Prioritize Brownfield Locations

- Case Study: Dubuque, IA
 - Over **26,000 parcels** analyzed
 - GIS modeling found environmental risk for **6,413 parcels**
 - Highest-scoring parcels concentrated heavily in downtown area, in and around three client-established target areas
 - High-scoring parcels were vetted by HR Green project team to arrive at **62 candidate sites**
 - Discussions with City officials and community stakeholders resulted in **26 of these sites being selected** for environmental assessment.

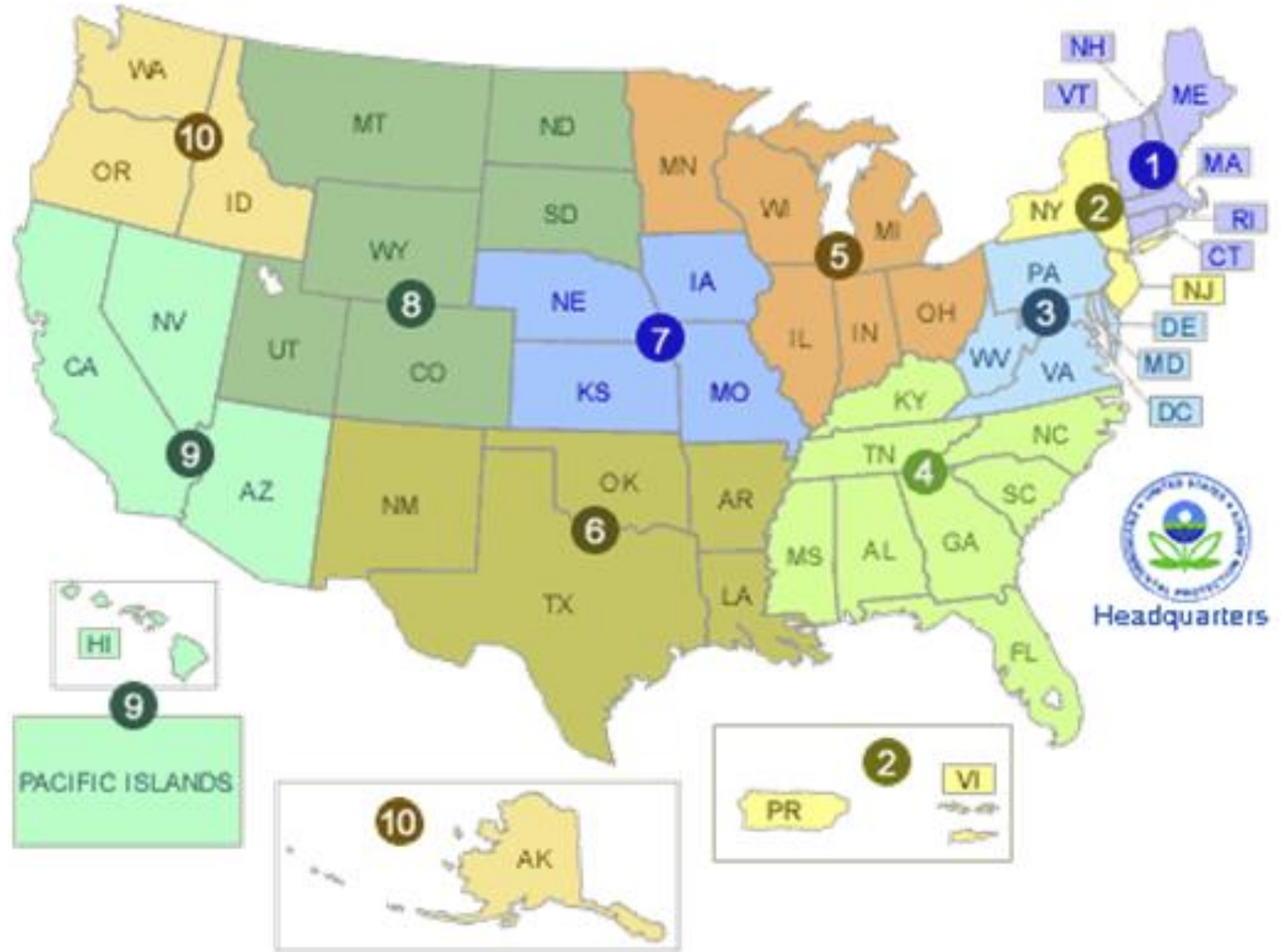


Model Results

+ Historical / Site-specific knowledge

Candidate Sites

Brownfields Inventory and Prioritization *Across all 10 EPA Regions*



Brownfields and Land Revitalization in EPA Region 2

Regional Profile for EPA Region 2

This section examines TRI reporting in [EPA Region 2](#). Region 2 includes New Jersey, New York, Puerto Rico, US Virgin Islands, and 8 tribes.

Region 2 serves 2 states,
2 territories,
and 8 tribes



REGION 2'S
POPULATION IS
31.4 million
PEOPLE



9% of the U.S. population

U.S. Census Annual Estimates of the Resident Population: July 1, 2020

The **sectors** with the greatest TRI releases are:

- Chemical manufacturing
- Electric utilities

The TRI **chemicals** released in the greatest quantities are:

- Nitrate compounds
- Zinc and compounds

U.S. EPA TRI, Reporting Year 2020

1,016 facilities in the region report to TRI

which is 5% of all TRI facilities

U.S. EPA TRI, Reporting Year 2020

US EPA ACRES

The Assessment, Cleanup and Redevelopment Exchange System (ACRES) is an online database for Brownfields Grantees to electronically submit data directly to EPA.

- <https://www.epa.gov/brownfields/brownfields-grantee-reporting-using-assessment-cleanup-and-redevelopment-exchange>
- <https://www.epa.gov/frs/geospatial-data-download-service> (acres_frs.kmz)

Brownfields Inventory and Prioritization

ACRES

*Across all 10
EPA Regions*



Brownfields Inventory and Prioritization

ACRES

EPA
Region 2



Brownfields Inventory and Prioritization

ACRES

New Jersey





Using GIS to turn Data
into actionable
information

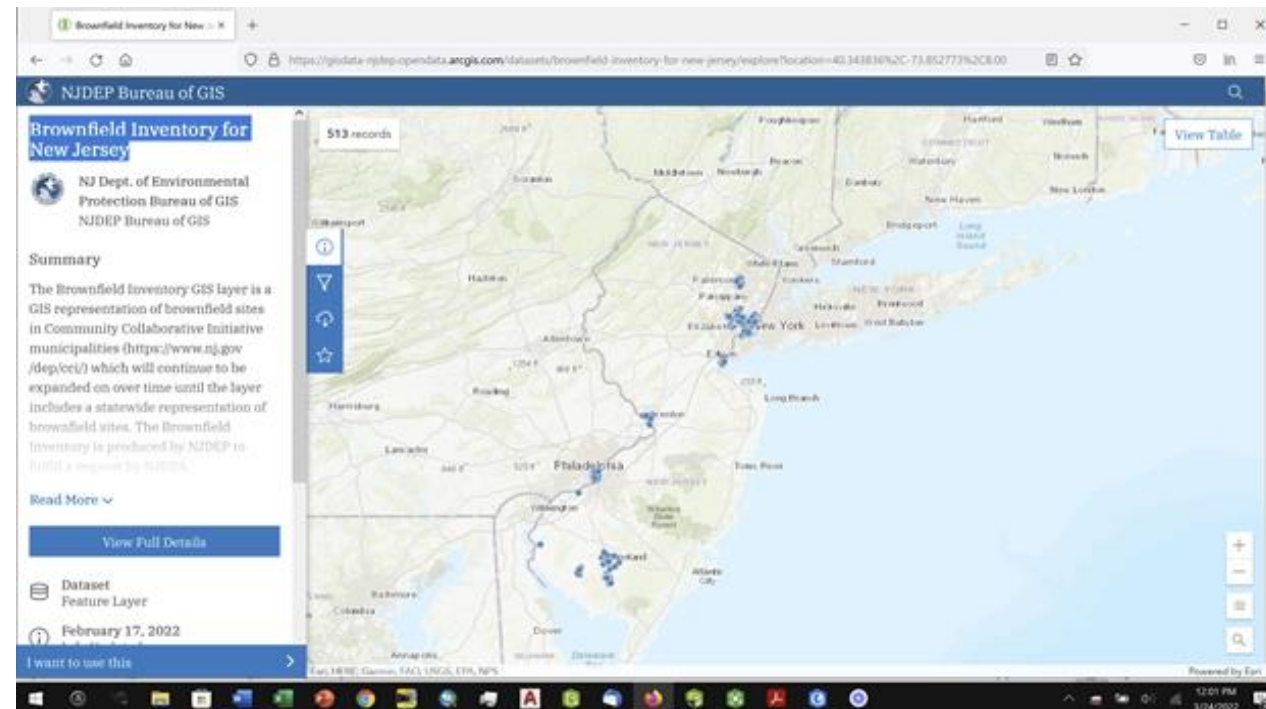
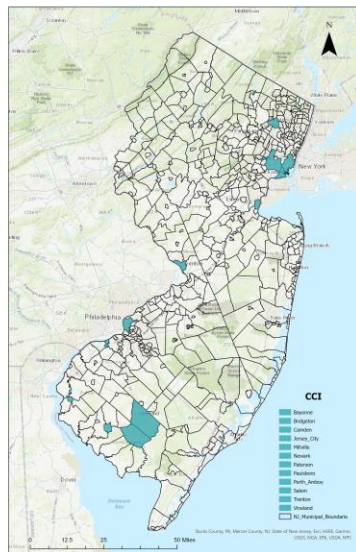


The *Brownfield* *Inventory*

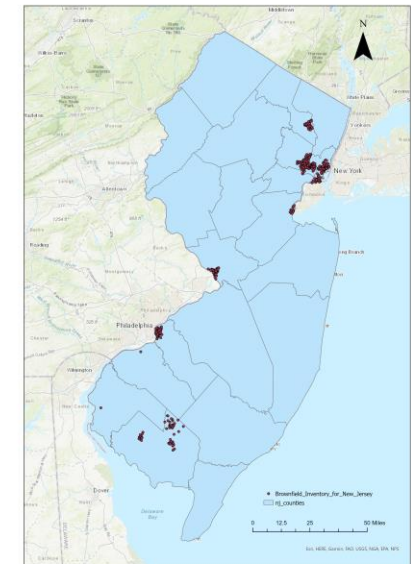
- The Brownfield Inventory is a subset of sites from the Known Contaminated Sites List (KCSL) for New Jersey.
 - Phase 1 of the Brownfield Inventory **exclusively includes** brownfield sites in Opportunity Zones in Community Collaborative Initiative municipalities.
 - Phase 2 of the Brownfield Inventory **includes all brownfield** sites within Community Collaborative Initiative municipalities.
 - Future phases will expand upon this work
 - <https://njdep.maps.arcgis.com/home/item.html?id=a895bf0512044349bc6631b64457a33f>
 - <https://njdep.maps.arcgis.com/home/webmap/viewer.html?layers=a895bf0512044349bc6631b64457a33f>

Brownfields Inventory and Prioritization *Community Collaborative Initiative (CCI)*

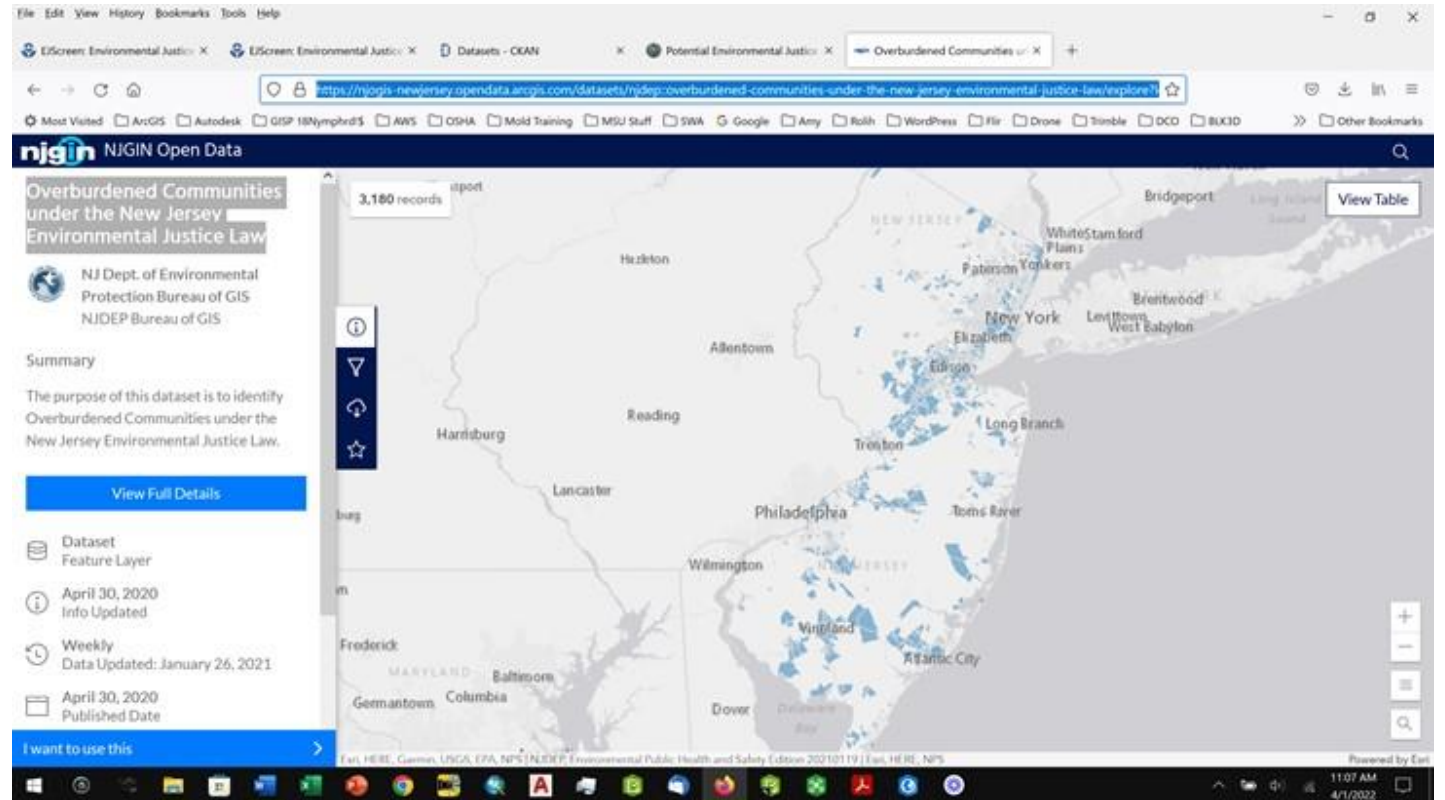
Community Collaborative Initiative (CCI)



Brownfield Inventory for New Jersey (513 Sites)

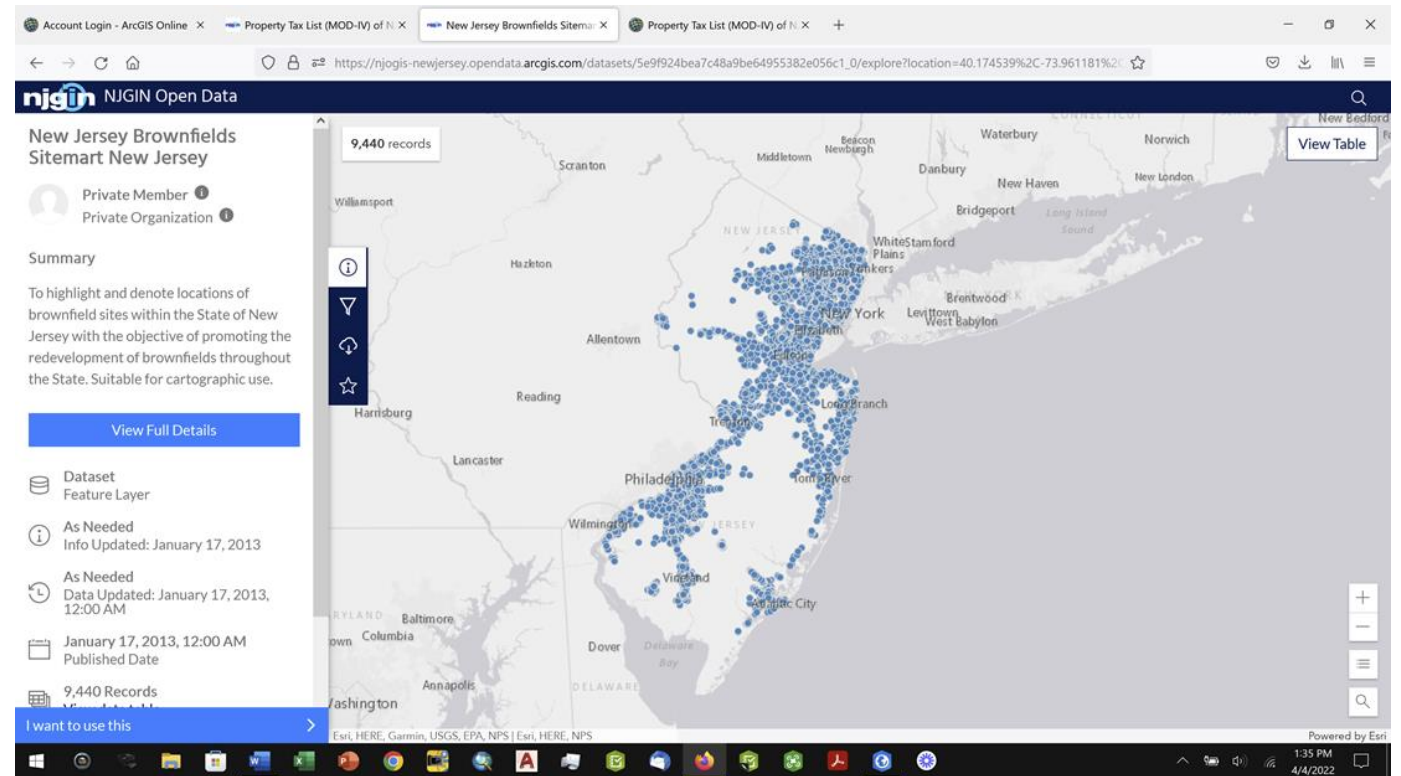


Overburdened Communities under the New Jersey Environmental Justice Law

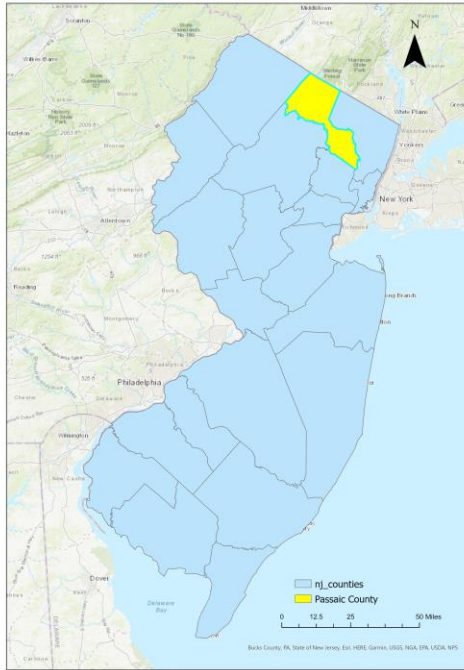


New Jersey Brownfields Sitemart

Info Last Updated:
January 17, 2013

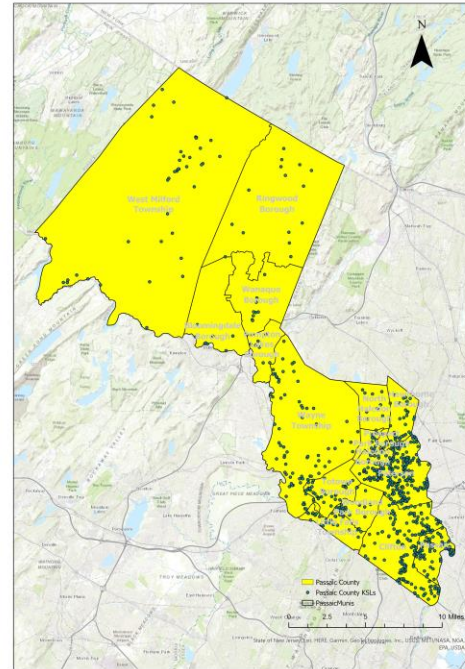


Passaic County



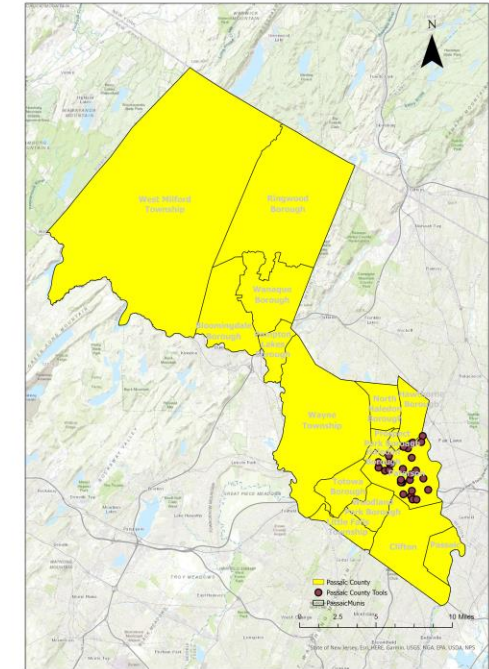
<https://gisdata-njdep.opendata.arcgis.com/datasets/brownfield-inventory-for-new-jersey/explore?location=40.153600%2C-74.765750%2C9.33>

Passaic County Sites
from Known Contaminates Site List (776 Sites)



<https://gisdata-njdep.opendata.arcgis.com/datasets/brownfield-inventory-for-new-jersey/explore?location=40.153600%2C-74.765750%2C9.33>

Passaic County Sites
from Brownfields Tool (32 Sites)



<https://gisdata-njdep.opendata.arcgis.com/datasets/brownfield-inventory-for-new-jersey/explore?location=40.153600%2C-74.765750%2C9.33>

The County of Passaic

Passaic County Brownfield Commission


Parcels and MOD-IV Composite of NJ

Date Updated: December 13, 2021

Account Login - ArcGIS Online X Property Tax List (MOD-IV) of NJ X Property Tax List (MOD-IV) of NJ X Property Tax List (MOD-IV) of NJ X

Home Gallery Map Scene Notebook Groups Content Organization

Property Tax List (MOD-IV) of NJ (Download) Overview

 This table was developed for public use of the most current property tax assessment information. It is intended for use in conjunction with edgematched parcels data. The table is designed for public distribution and therefore the contents of OWNER_NAME field have been redacted. See supplemental information for details.

Document Link from New Jersey Office of GIS
Managed by NJOGIS

Created: Aug 16, 2018 Updated: Dec 13, 2021 View Count: 163

Authoritative

Description

The MOD-IV system provides for the uniform preparation, maintenance, presentation and storage of property tax information required by the Constitution of the State of New Jersey, New Jersey Statutes, and rules promulgated by the Director of the NJ Division of Taxation. MOD-IV maintains and updates all assessment records, and produces all statutorily required tax lists for property tax bills. This list accounts for all parcels of real property as delineated and identified on each municipality's official Tax Map, as well as taxable values and descriptive data for each parcel. Tax List records were received as raw data from the NJ Office of Information Technology (NJ OIT) Taxation Team which collects source information from municipal tax assessors and creates the statewide table. This table was subsequently processed for ease of use with NJ parcel spatial data.

Details

Size: 1 KB

☆☆☆☆☆

Share

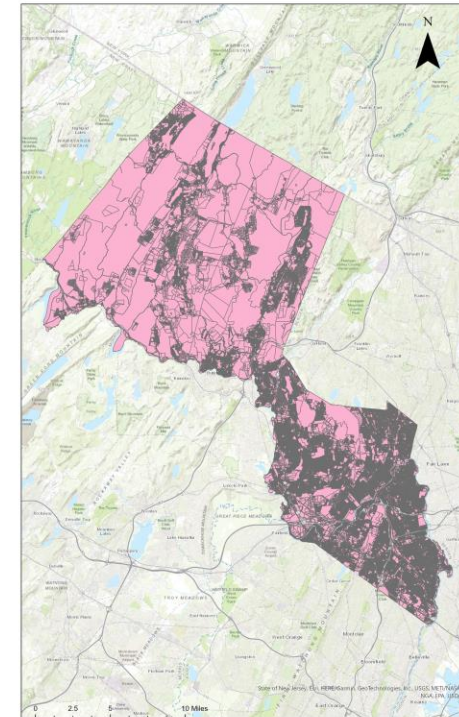
Open

Share

Metadata

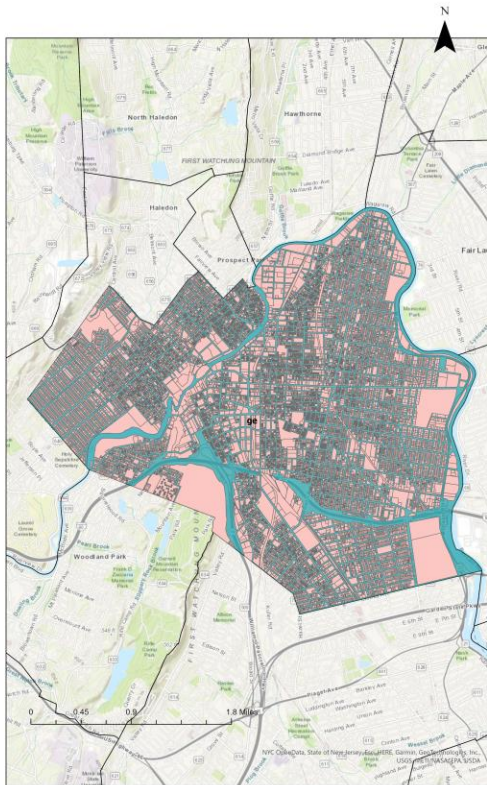
Owner

Passaic County Parcels from MOD-IV



Brownfields Inventory and Prioritization Community Collaborative Initiative (CCI)

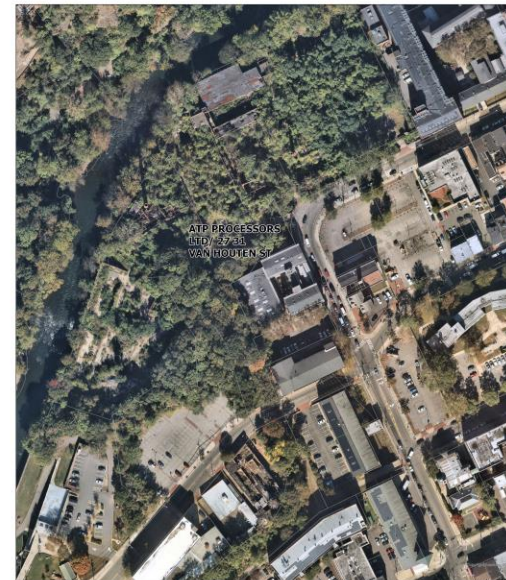
Paterson, NJ - MOD-IV Parcels



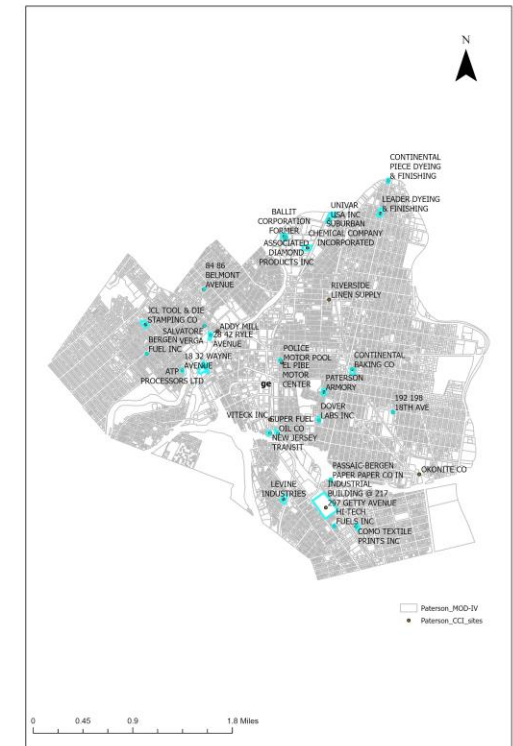
18 32 WAYNE AVENUE



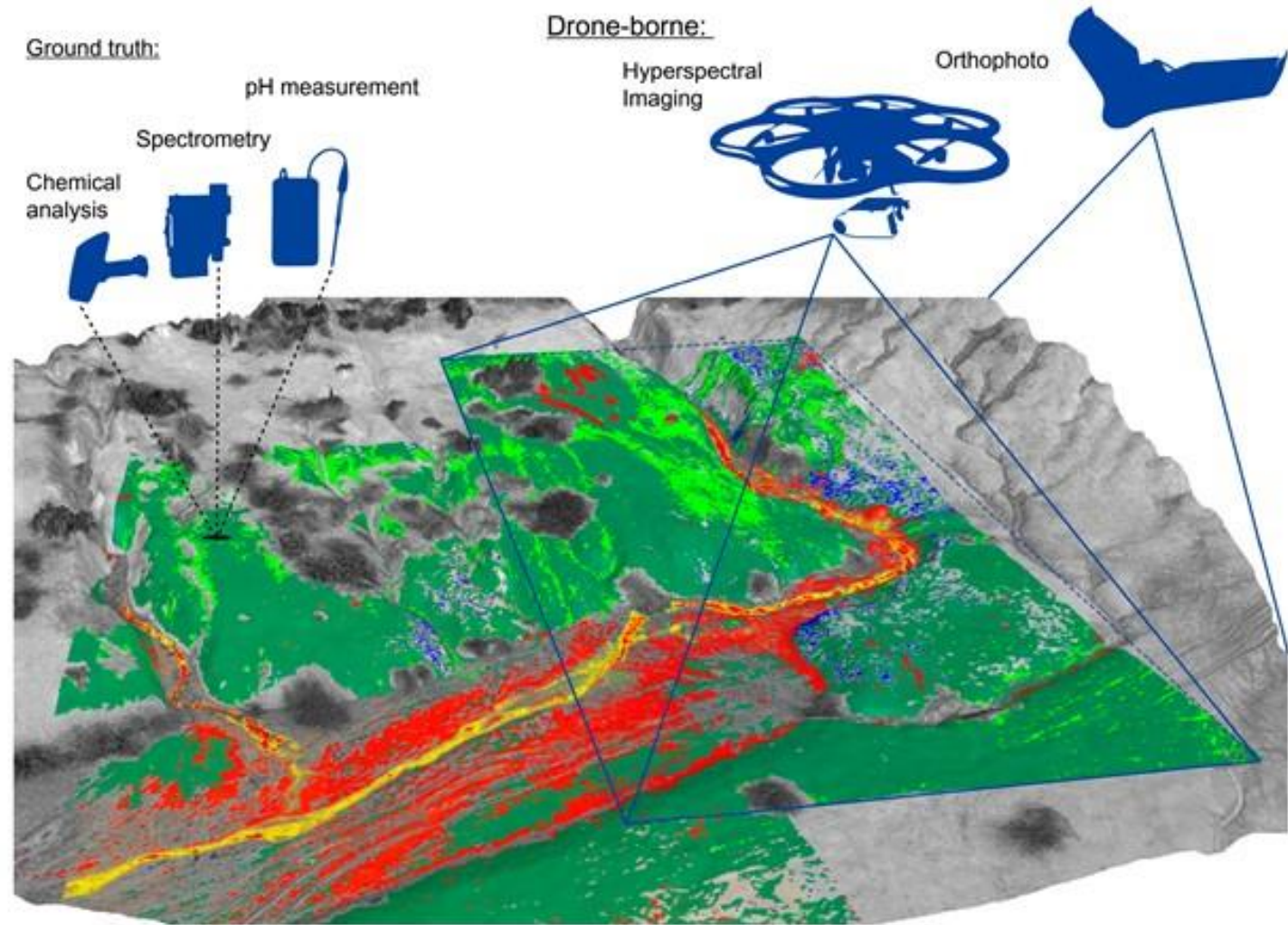
ATP Processors Ltd.



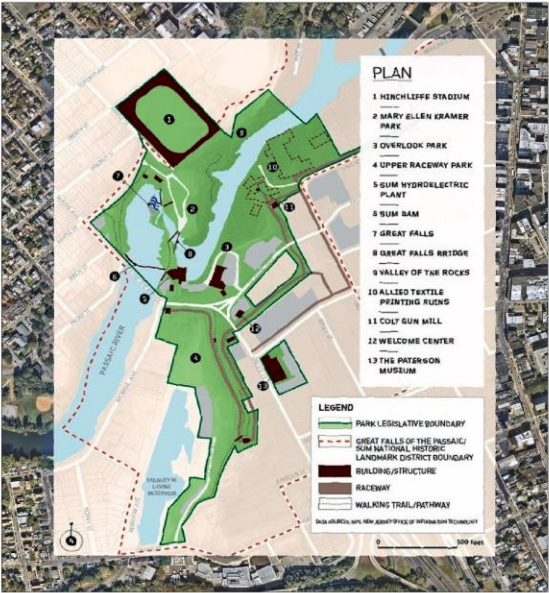
Paterson, NJ MOD-IV Parcels



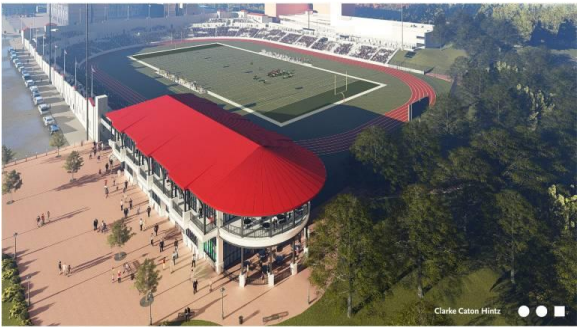
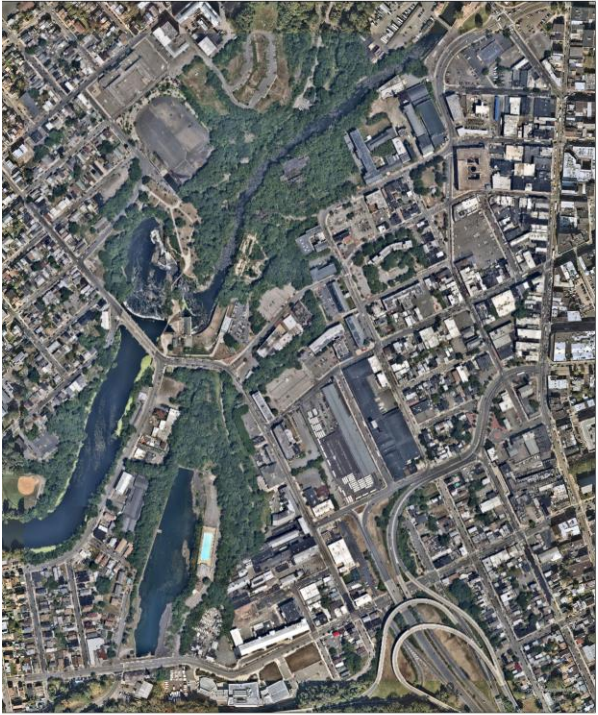
Use of Remote
Sensing to
Prioritize
Brownfields:
From
Initial Assessment
to Remediation



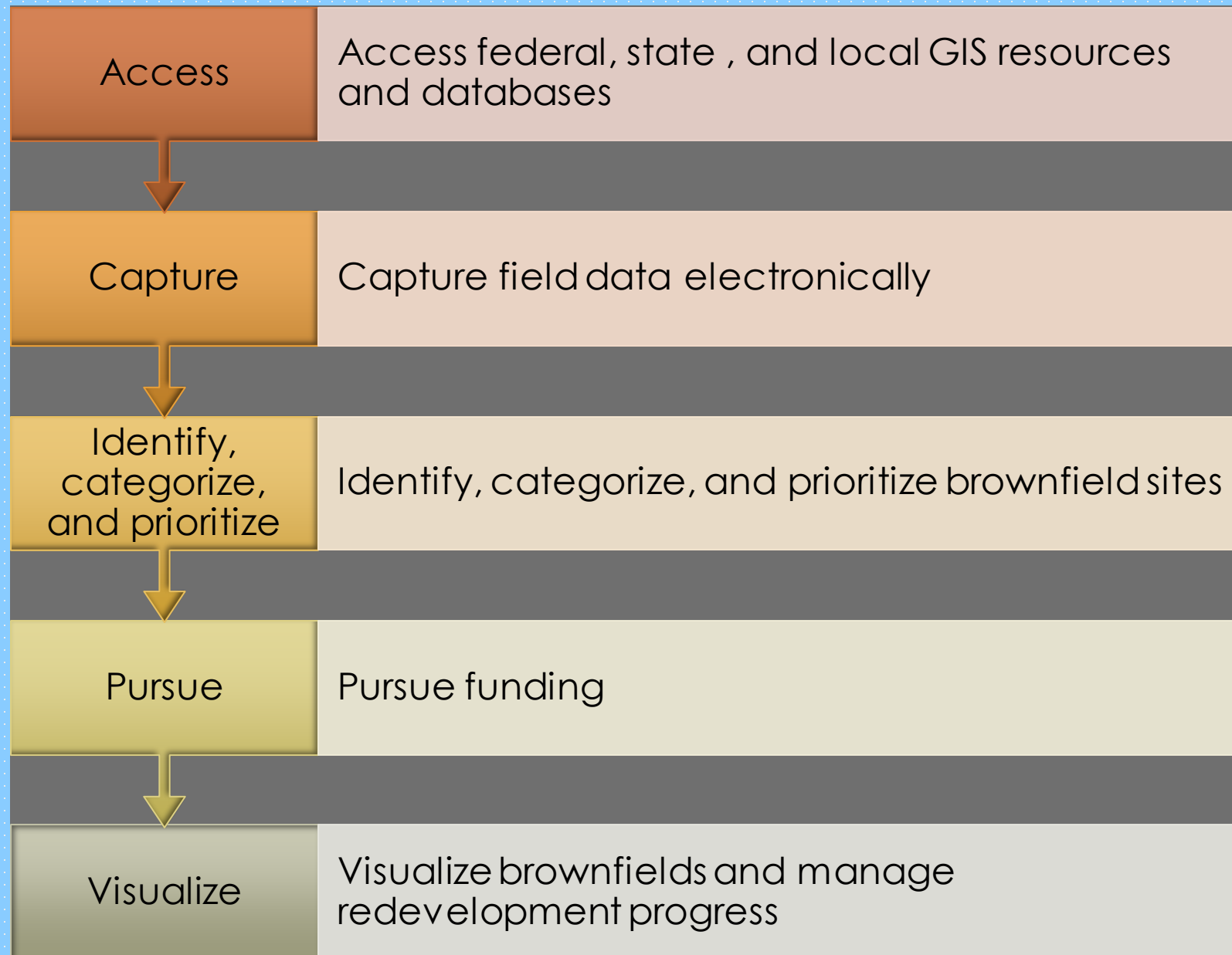
Hinchliffe Stadium



Hinchliffe Stadium



Using GIS & Remote Sensing Will Help You





Q & A



MAPPING FOR SUCCESS: USING GIS & REMOTE SENSING TO INVENTORY & PRIORITIZE YOUR BROWNFIELDS



Sean Vroom

Director

NJ Brownfields Assistance Center @NJIT
svroom@njit.edu



Mehmet Secilmis, GISP

Senior Global Account Manager
AEC & Environmental, Esri
msecilmis@esri.com



Amy Ferdinand, GISP

Director of Environmental Health and Safety
Montclair State Univ.
aferdinand.msu@gmail.com