

# Report: Enrolling Student Survey Graduate Students, Fall 2007

January 2008

*Office of Institutional Research and Planning*  
New Jersey Institute of Technology

## **Executive Summary**

The Enrolling Student survey for graduate students was created to gather a profile of incoming graduate students and information on of their decision to enroll in NJIT. The sample was expanded this year to contain part-time graduate students in order to enhance NJIT's ability to attract and enroll more students. The survey was deployed via the web. The survey instrument consisted of 34 questions concerning their goals, enrollment decision, comparison to other college and commitment to finishing their degree. Tables and graphics summarizing the results are attached. Overall, the results reveal the importance of the NJIT web in attracting and getting students to enroll . Highlights of the findings include:

### **Goals**

- Both full-time and part-time NJIT graduate students are focused on career advancement. The top two goals are: *prepare for a career* and *attain skills that will be useful on a job*. However, part-time students were significantly more interested in attaining job skills and improving their ability to make money. Full-time students are more interested in improving their interpersonal skills.

### **Enrollment**

- Students are attracted to NJIT's academic strengths: *NJIT's academic reputation, quality of instruction, and academic facilities*. Full-time students' enrollment decisions are significantly more influenced by the *size of the student body, extra-curricular activities, public safety record, and coop/internship programs*. Part-time students are attracted more by *NJIT's academic reputation and reasonable cost*.
- The *internet* and *email contact* are the most influential sources for learning about NJIT for full-time and part-time graduate students. Thirty-two percent of part-time students and 17% of full-time students attended NJIT.
- *NJIT'S webpage* was a key factor for all graduate students' decision to apply and attend NJIT. Also, faculty contact was highly influential in all students' decision to attend NJIT. *US News and World Report* was more influential to full-time students' decision to apply and attend NJIT than part-time students.
- *Friend* and *college professor* were the greatest influences on all students' decision to apply and attend NJIT.
- Most full-time graduate students (75%) did not visit the NJIT campus before making their decision to enroll while 60% of the part-time graduate students visited campus.

### **Comparison to Other Colleges**

- NJIT was the first choice for 61% of the full-time students and 78% of the part-time students. Our major competitor is Rutgers University.
- In comparison to other colleges, full-time and part-time students rated NJIT's website highly.

### **Commitment**

- More than 75% of all graduate students are very strongly committed to finishing their degree.

### **Recommendations**

NJIT should maintain an attractive informative website and internet presence and further enhance faculty contact with current undergraduate and other prospective students.

# ***Table of Contents***

<b>Executive Summary .....</b>	<b>i</b>
Procedures and Sample .....	1
Section I: Goals .....	3
Section II: Enrollment Factors/Influences.....	5
Section III: Academic Situation .....	10
Section IV: Enrollment .....	13
Section V: Commitment.....	23
Appendix.....	26

## Procedures and Sample

Institutional Research met with the Director of Graduate Admissions to aid in reviewing and constructing the entering students survey for graduate students. The sample was expanded this year to contain part-time graduate students in order to enhance NJIT's ability to attract and enroll more students. All first time graduate students (full-time and part-time) were extracted from the official SURE enrollment file for participation in the sample. They were sent an invitation email and subsequent reminders to participate in the survey from the Director of Graduate Admissions. The survey instrument consisted of 34 questions concerning their goals, enrollment decision, comparison to other college and commitment to finishing their degree. A sample size of 425 students was achieved, representing 52% of entering graduate students.

The summary of student demographics is shown in Figure 1.

**Figure 1: Description of Sample**

### 1. Sample size, by school

	<b>n</b>	<b>% of total</b>	<b>Actual n</b>	<b>% of total</b>
New Jersey School of Architecture	14	3%	39	5%
College of Computing Sciences	106	26%	193	24%
College of Science and Liberal Arts	38	9%	68	8%
Newark College of Engineering	223	54%	419	52%
School of Management	27	7%	86	10%
Interdisciplinary programs	4	1%	6	1%
<b>Total</b>	<b>412</b>	<b>100%</b>	<b>811</b>	<b>100%</b>

\*[13 Non-Matriculated Students were not included in this table.]

### 2. Enrollment status

	<b>n</b>	<b>% of total</b>	<b>Actual n</b>	<b>% of total</b>
Full-time students	332	78%	565	66%
Part-time students	93	22%	290	34%
<b>Total</b>	<b>425</b>	<b>100%</b>	<b>855</b>	<b>100%</b>

### 3. Gender

	<b>n</b>	<b>% of total</b>	<b>Actual n</b>	<b>% of total</b>
Male	291	68%	608	71%
Female	134	32%	247	29%
No response	0	0%	0	0%
<b>Total</b>	<b>425</b>	<b>100%</b>	<b>672</b>	<b>100%</b>

### 4. Ethnicity

	<b>n</b>	<b>% of total</b>	<b>Actual n</b>	<b>% of total</b>
White, non-Hispanic	77	18%	175	20%
Asian/Pacific Islander	260	61%	467	55%
American Indian or Alaskan Native	4	1%	5	1%
Hispanic	24	6%	60	7%
Black, non-Hispanic	20	5%	54	6%
Not a US citizen or permanent resident				
Declined to state/no response	40	9%	94	11%
<b>Total</b>	<b>425</b>	<b>100%</b>	<b>855</b>	<b>100%</b>

## 5. Citizenship

	<b>n</b>	<b>% of total</b>	<b>Actual n</b>	<b>% of total</b>
U.S. citizen or permanent resident	154	36%	431	50%
Not a U.S. citizen or permanent resident	271	64%	424	50%
<b>Total</b>	<b>425</b>	<b>100%</b>	<b>855</b>	<b>100%</b>

## 6. Living on campus

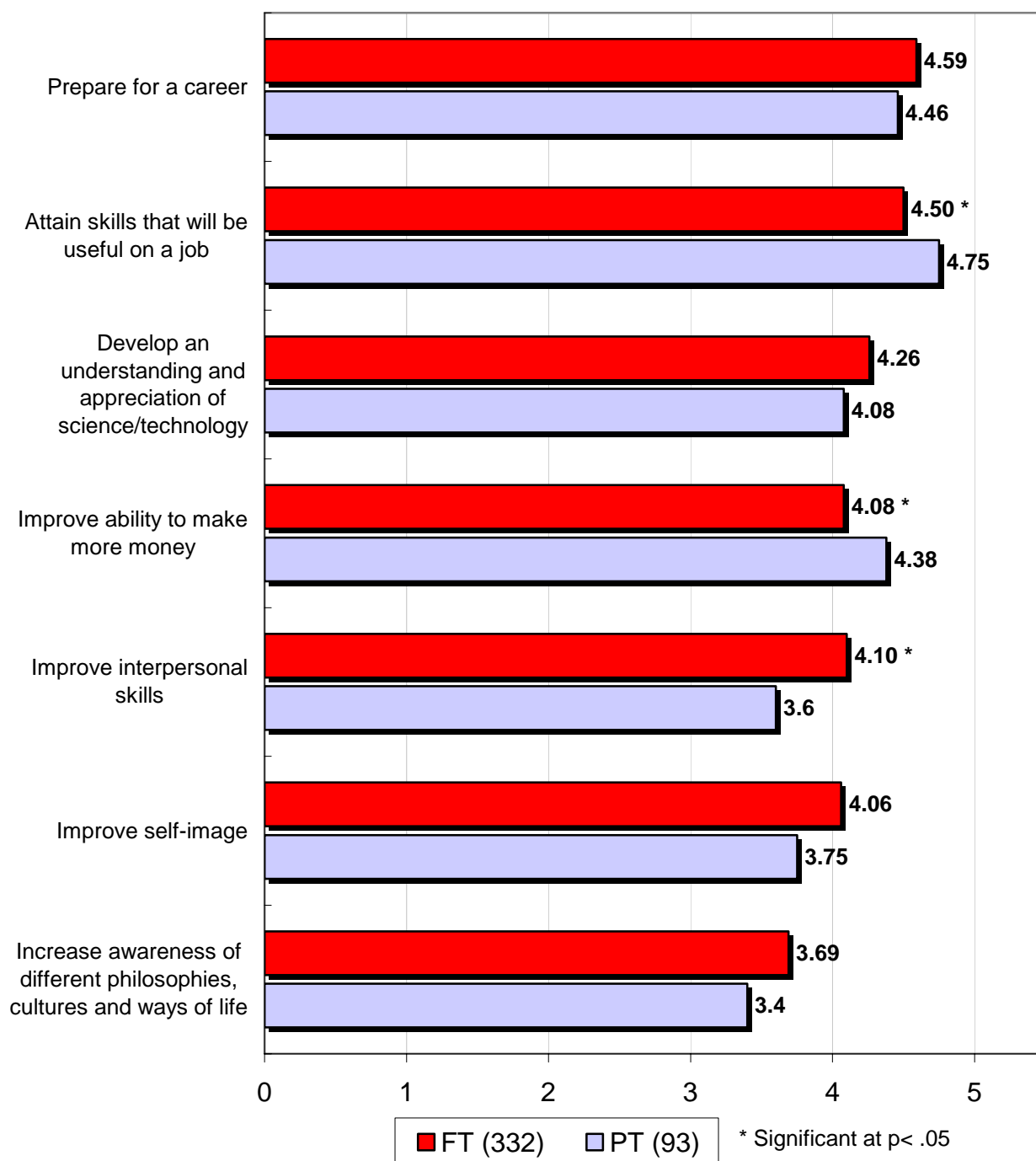
	<b>n</b>	<b>% of total</b>	<b>Actual n</b>	<b>% of total</b>
Resident	21	5%	32	4%
Commuter	404	95%	823	96%
<b>Total</b>	<b>425</b>	<b>100%</b>	<b>855</b>	<b>100%</b>

## 7. Department/program

	<b>n</b>	<b>% of total</b>	<b>Actual n</b>	<b>% of total</b>
Applied statistics	7	1.6%	11	1.3%
Architecture	10	2.4%	26	3.0%
Biology	0	0.0%	3	0.4%
Biomedical engineering	38	8.9%	55	6.4%
BNFO	2	0.5%	3	0.4%
Civil engineering	15	3.5%	38	4.4%
CERT	13	3.1%	44	5.1%
Chemical engineering	9	2.1%	18	2.1%
Chemistry	4	0.9%	10	1.2%
Computational biology	0	0.0%	1	0.1%
Computer engineering	11	2.6%	17	2.0%
Computer science	64	15.1%	110	12.9%
Electrical engineering	60	14.1%	109	12.7%
Engineering management	25	5.9%	56	6.5%
Environmental engineering	4	0.9%	8	0.9%
Environmental policy studies	0	0.0%	1	0.1%
ESC	2	0.5%	2	0.2%
EVSC	5	1.2%	11	1.3%
Industrial engineering	5	1.2%	9	1.1%
Internet engineering	3	0.7%	7	0.8%
Information science	40	9.4%	79	9.2%
Infrastructure planning	2	0.5%	5	0.6%
Applied mathematics	3	0.7%	5	0.6%
Mathematical sciences	10	2.4%	11	1.3%
Mechanical engineering	20	4.7%	40	4.7%
Manufacturing systems engineering	5	1.2%	6	0.7%
Management (MS program)	5	1.2%	18	2.1%
Management (MBA program)	22	5.2%	68	8.0%
Material science	4	0.9%	6	0.7%
Occupational safety and health engineering	2	0.5%	6	0.7%
Pharmaceutical engineering	10	2.4%	18	2.1%
Applied physics	3	0.7%	8	0.9%
Professional and technical communication	6	1.4%	8	0.9%
Telecommunications	10	2.4%	18	2.1%
Transportation	4	0.9%	12	1.4%
Urban systems	2	0.5%	8	0.9%
<b>Total</b>	<b>425</b>	<b>100%</b>	<b>855</b>	<b>100%</b>

## ***Section I: Goals***

## Student Mean Ratings of the Importance of Goals in their enrollment decision By Attendance Status

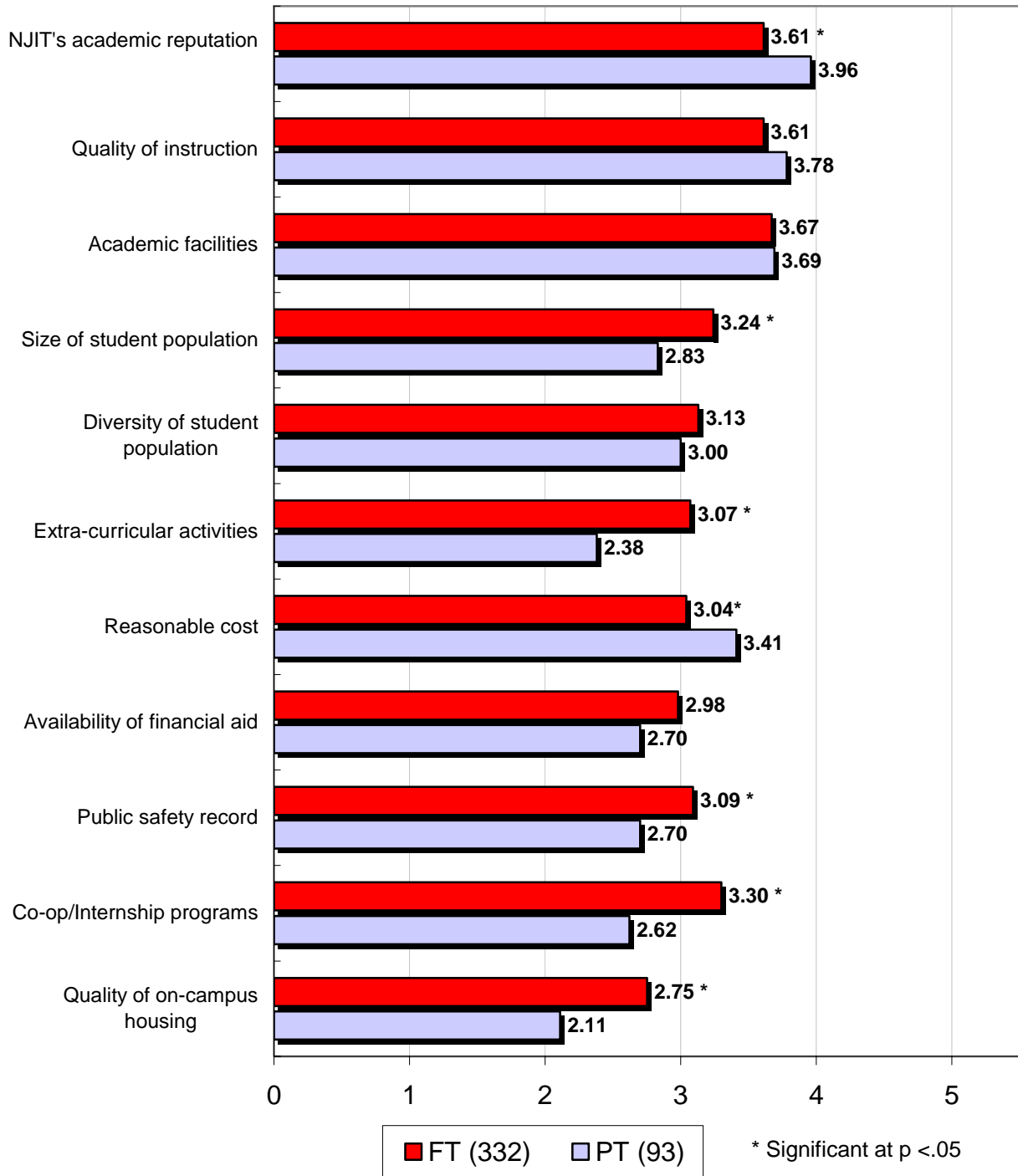


Please rate the following on the degree of importance to you in choosing to enroll at NJIT.  
 (Scale: 1 = Not at all Important, 2 = A Little Important, 3 = Moderately Important,  
 4 = Important, 5 = Very Important)

## ***Section II: Enrollment Factors/Influences***

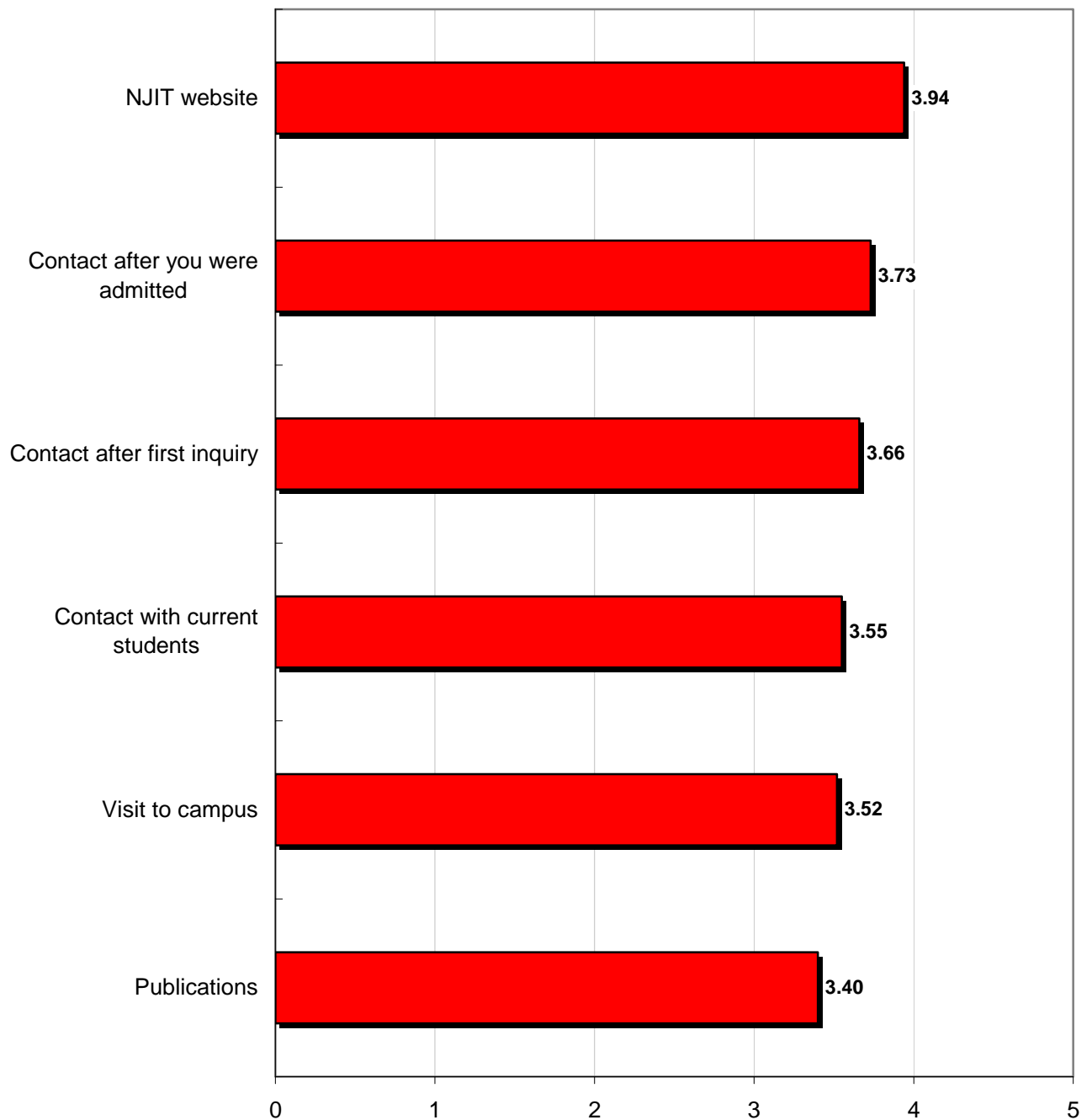


## Factors in Enrollment Decision



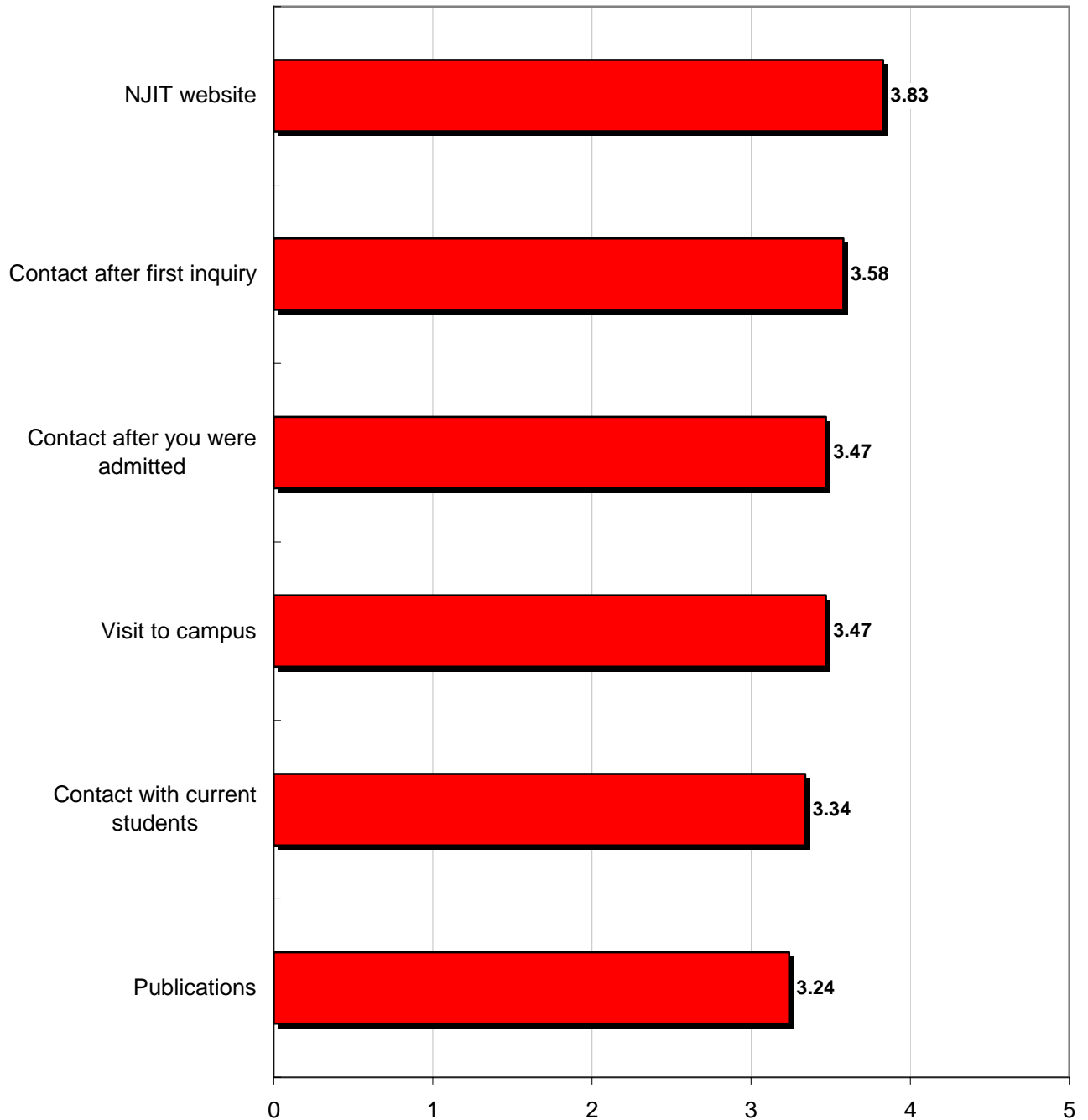
(Scale: 1 = Very Low, 2 = Low, 3 = Medium, 4 = High, 5 = Very High)

## **NJIT in Comparison to Other Colleges Full time (n=332)**



(Scale: 1 = Very Low, 2 = Low, 3 = Medium, 4 = High, 5 = Very High)

## NJIT in Comparison to Other Colleges Part time (n=93)



(Scale: 1 = Very Low, 2 = Low, 3 = Medium, 4 = High, 5 = Very High)

## Factors in enrollment decision by School (Full time)

	<b>ARC* (n=12)</b>	<b>CCS (n=84)</b>	<b>INT* (n=4)</b>	<b>NCE (n=180)</b>	<b>SLA (n=30)</b>	<b>SOM* (n=21)</b>
NJIT's academic reputation	3.45	3.76	3.25	3.56	3.62	3.52
Quality of instruction	3.45	3.64	4.00	3.60	3.50	3.70
Academic facilities	3.73	3.77	3.50	3.67	3.45	3.60
Size of student population	3.09	3.42	3.00	3.20	3.03	3.30
Diversity of student population	2.91	2.93	2.33	3.25	3.04	3.25
Extra-curricular activities	2.90	3.14	2.67	3.10	2.67	3.21
Reasonable cost	3.75	2.83	5.00	2.89	3.48	3.76
Availability of financial aid	3.90	2.88	4.25	2.71	3.85	3.60
Public safety record	2.80	3.22	2.67	3.04	3.29	3.11
Co-op/Internship programs	3.00	3.55	2.67	3.13	3.58	3.53
Quality of on-campus housing	2.17	2.86	2.50	2.75	2.62	2.79

(Scale: 1 = Very Low, 2 = Low, 3 = Medium, 4 = High, 5 = Very High)

\*Results should be viewed with caution due to low n.

## Factors in enrollment decision by School (Part time)

	<b>ARC* (n=2)</b>	<b>CCS* (n=22)</b>	<b>NCE (n=43)</b>	<b>SLA* (n=8)</b>	<b>SOM* (n=6)</b>
NJIT's academic reputation	3.50	3.95	3.95	3.88	4.33
Quality of instruction	3.50	3.90	3.71	3.75	3.83
Academic facilities	3.50	3.95	3.55	3.50	3.50
Size of student population	2.00	3.15	2.82	2.83	3.00
Diversity of student population	2.00	3.62	2.87	2.50	3.40
Extra-curricular activities	2.00	2.74	2.39	2.00	2.50
Reasonable cost	3.00	3.36	3.40	3.33	3.67
Availability of financial aid	3.00	2.62	2.66	2.50	4.00
Public safety record	2.00	3.05	2.53	2.33	3.33
Co-op/Internship programs	3.00	3.05	2.45	2.33	2.33

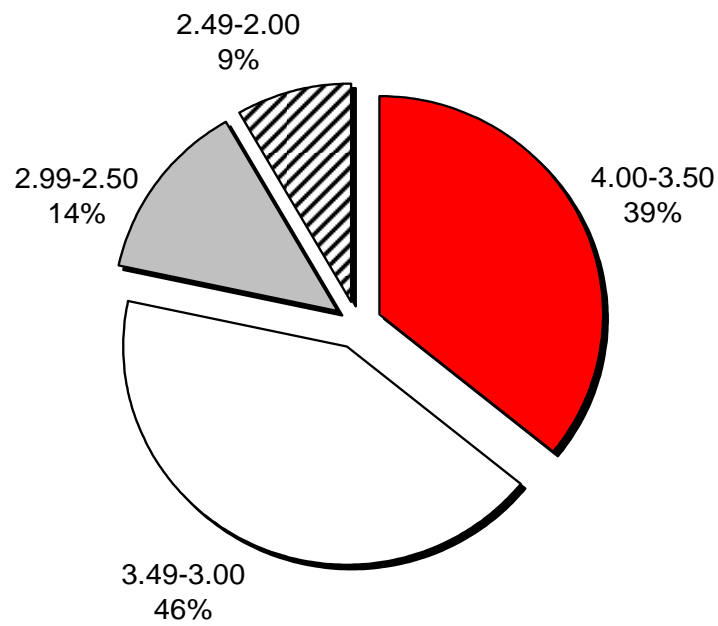
(Scale: 1 = Very Low, 2 = Low, 3 = Medium, 4 = High, 5 = Very High)

\*Results should be viewed with caution due to low n.

### ***Section III: Academic Situation***

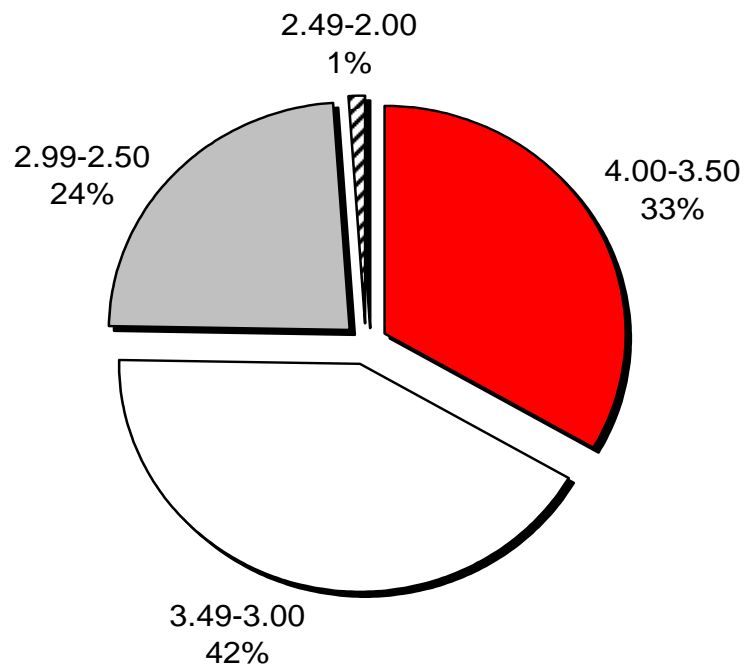
**Q-26. Approximate undergraduate GPA of  
graduate students (Full time)**

( $n = 326$ )



**Q-26. Approximate undergraduate GPA of  
graduate students (Part time)**

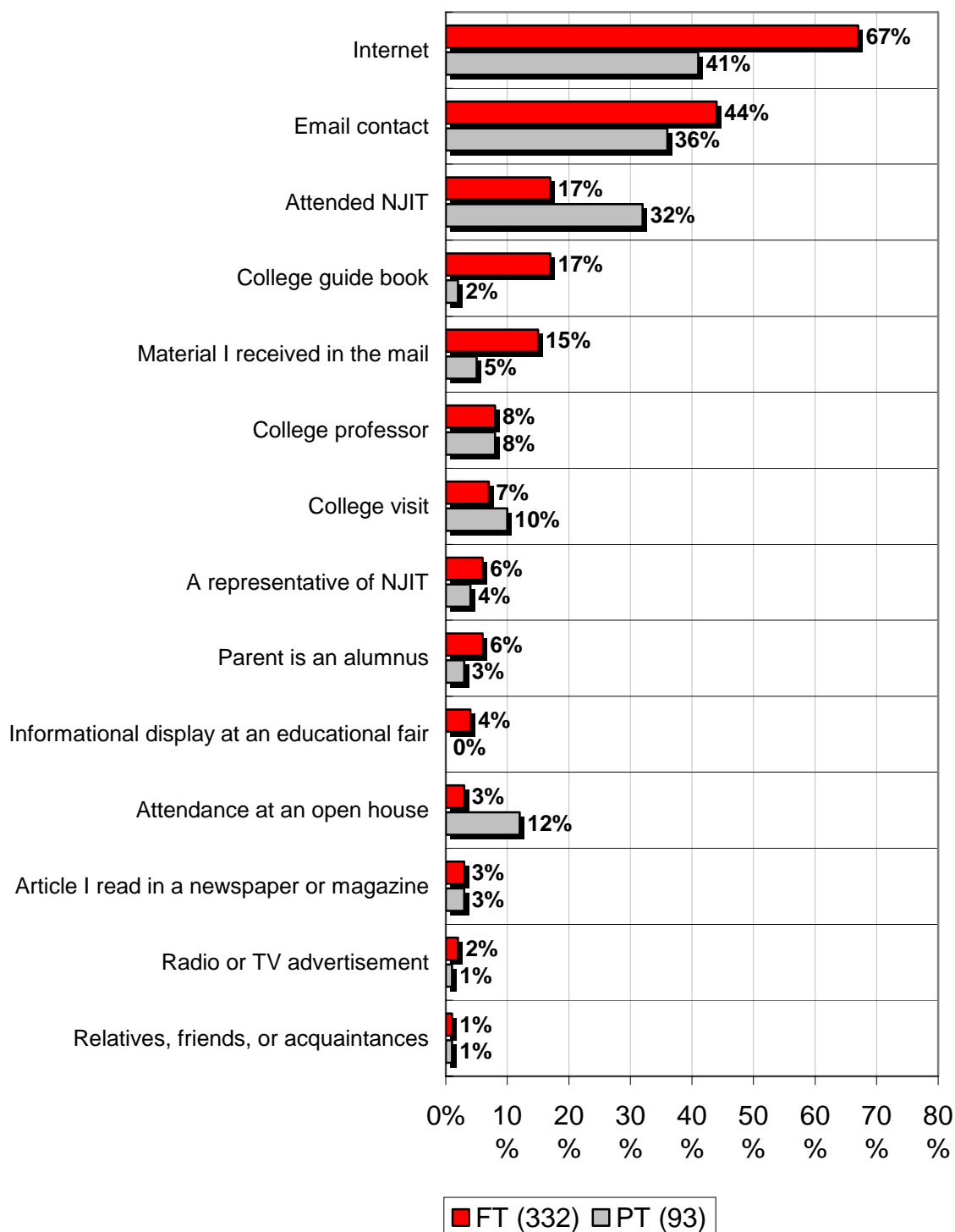
*(n = 93)*



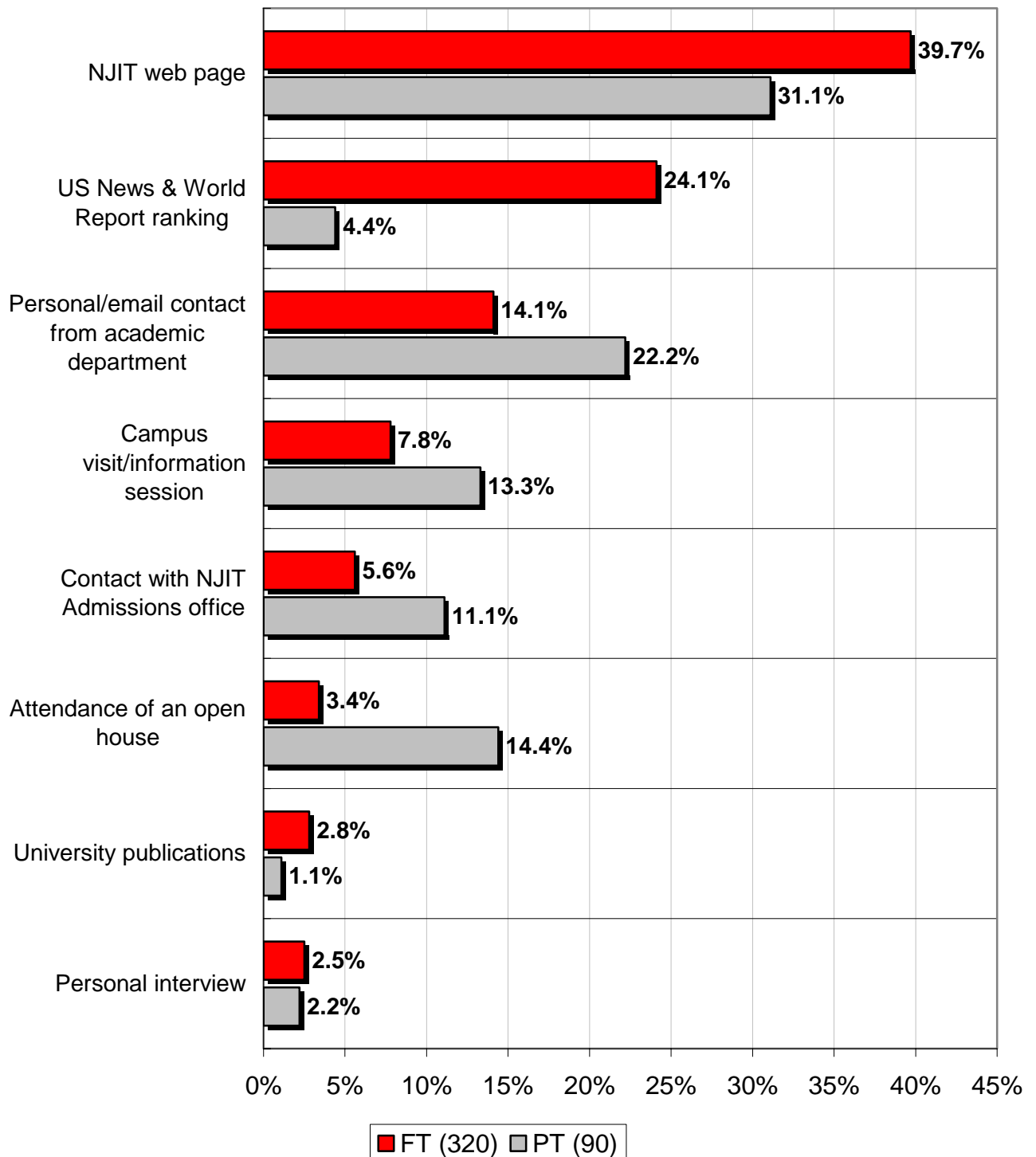
## ***Section IV: Enrollment***



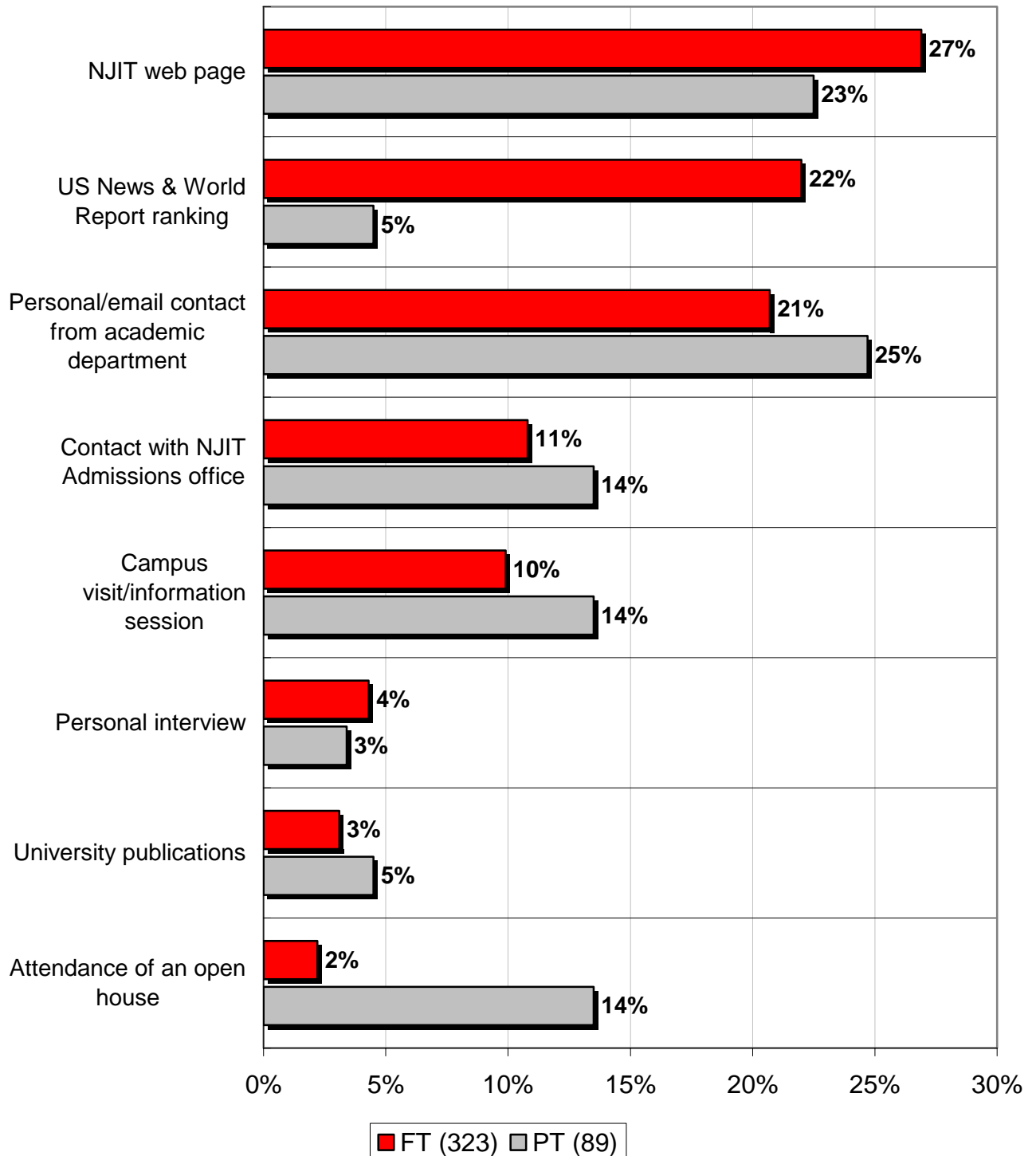
## Q-27. How did you learn about NJIT? Mark all that apply



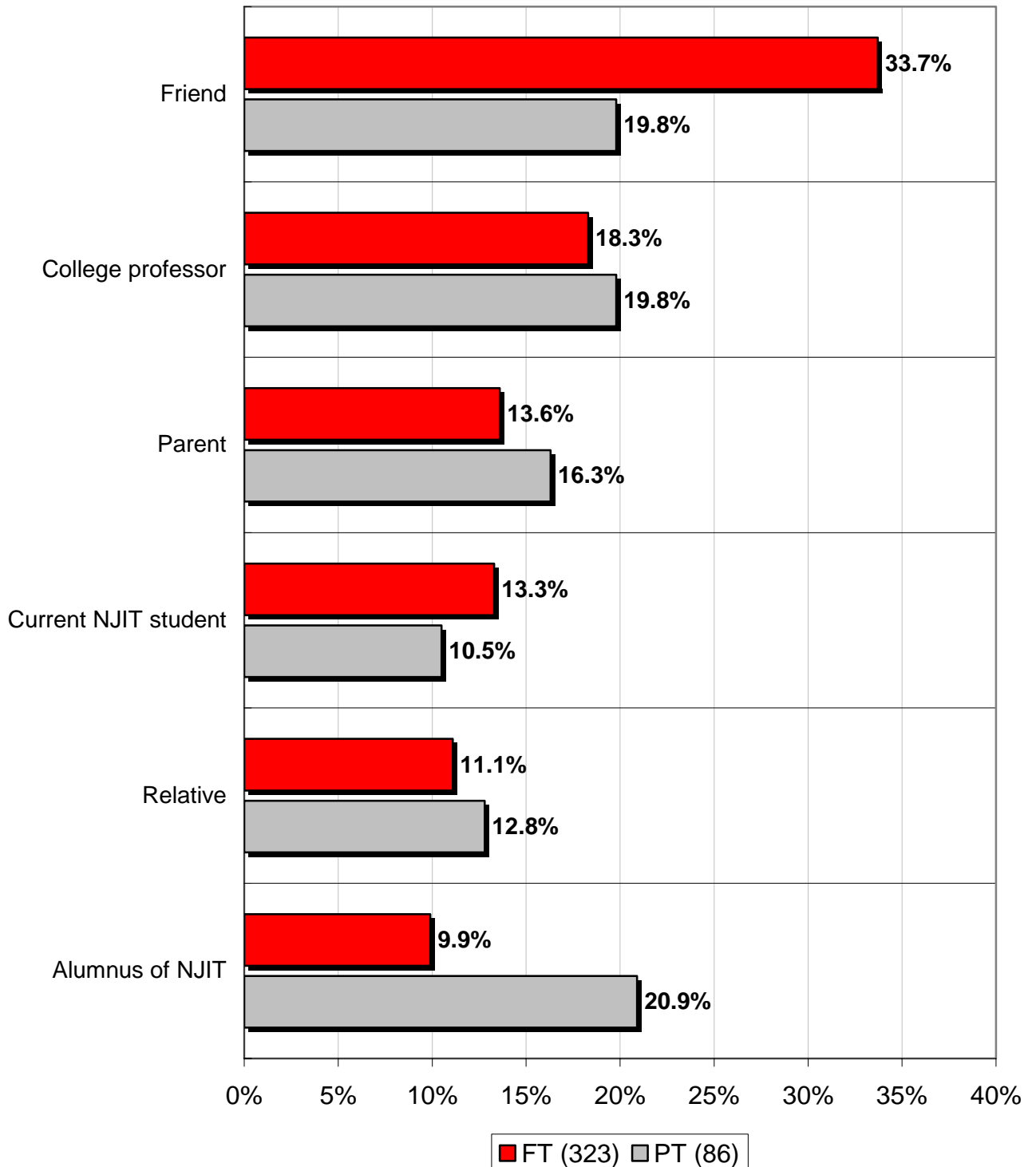
## Q-28. Which of the following most influenced your decision to apply?



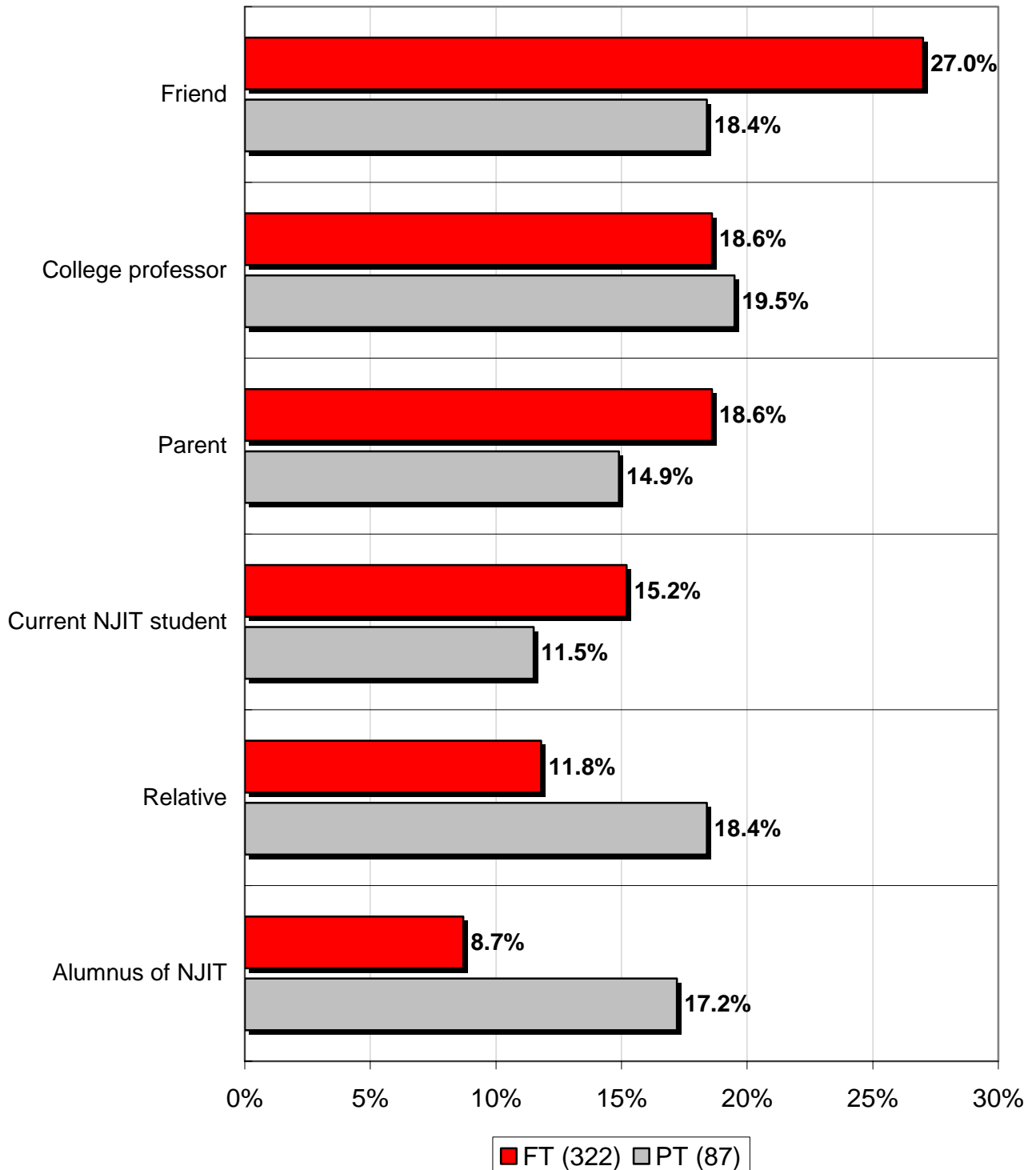
## Q-29. Which of the following most influenced your decision to attend?



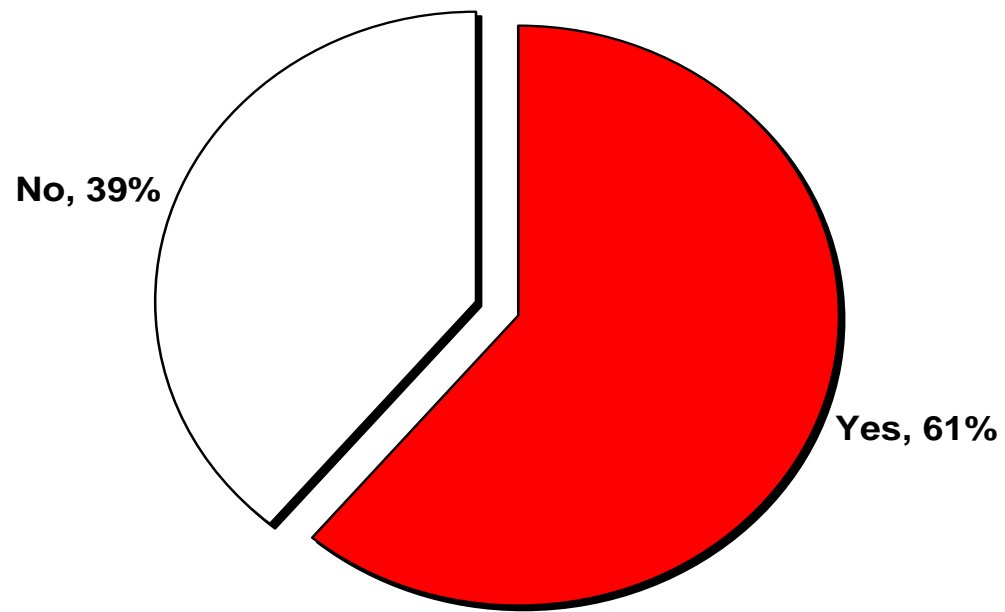
### Q-30. Who most influenced your decision to apply?



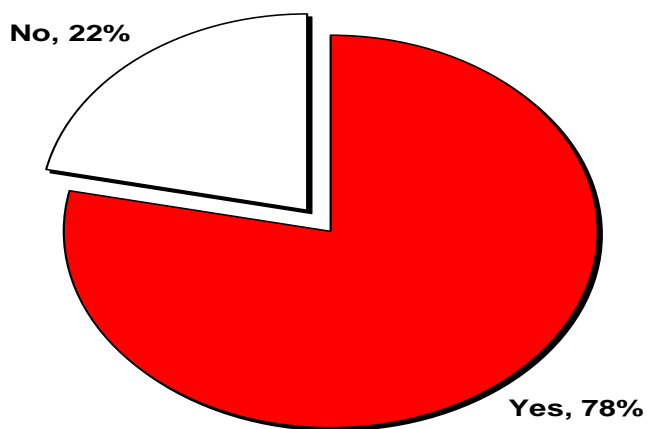
### Q-31. Who most influenced your decision to attend?



**Q-32. Was NJIT your first choice?  
(Full time,  $n = 329$ )**



**Q-32. Was NJIT your first choice?  
(Part time, n = 92 )**

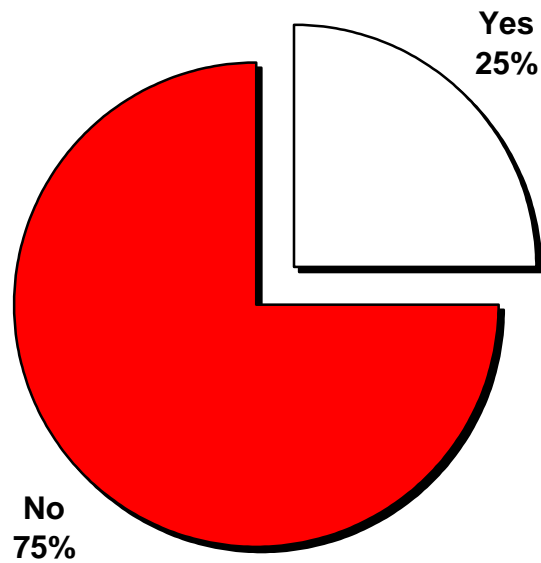


**Q-32a: If NJIT was not your first choice, name of first choice:  
(All students)**

	Top 10 choices: University/College *	n
1	Rutgers University	17
2	Stevens Institute of Technology	6
3	Columbia University	5
4	Illinois Institute of Technology	5
5	University of Maryland	5
6	MIT	4
7	Montclair State University	4
8	SUNY	4
9	University of Texas	4
10	Arizona State University	3

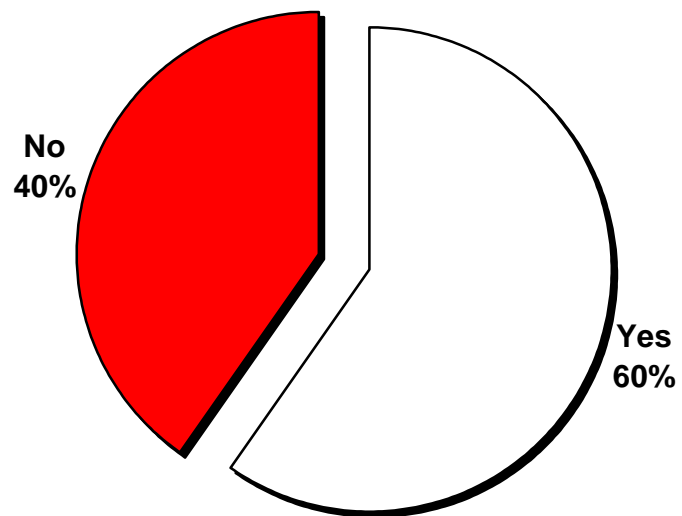
\* See Appendix for other responses

**Q-33. Did you visit the NJIT campus before making your decision to enroll? (*Full time, n = 327*)**



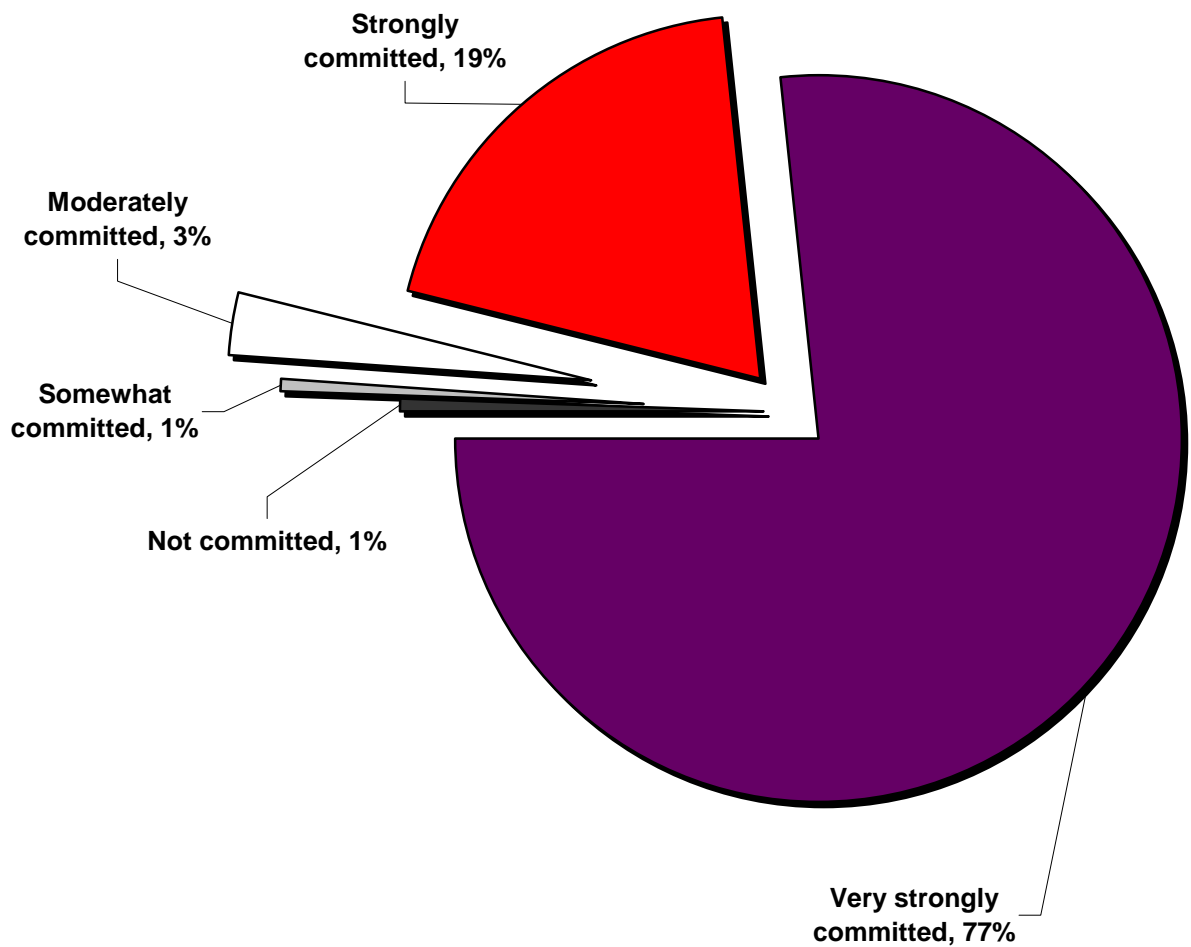


**Q-33. Did you visit the NJIT campus before making your decision to enroll? (*Part time, n=92*)**

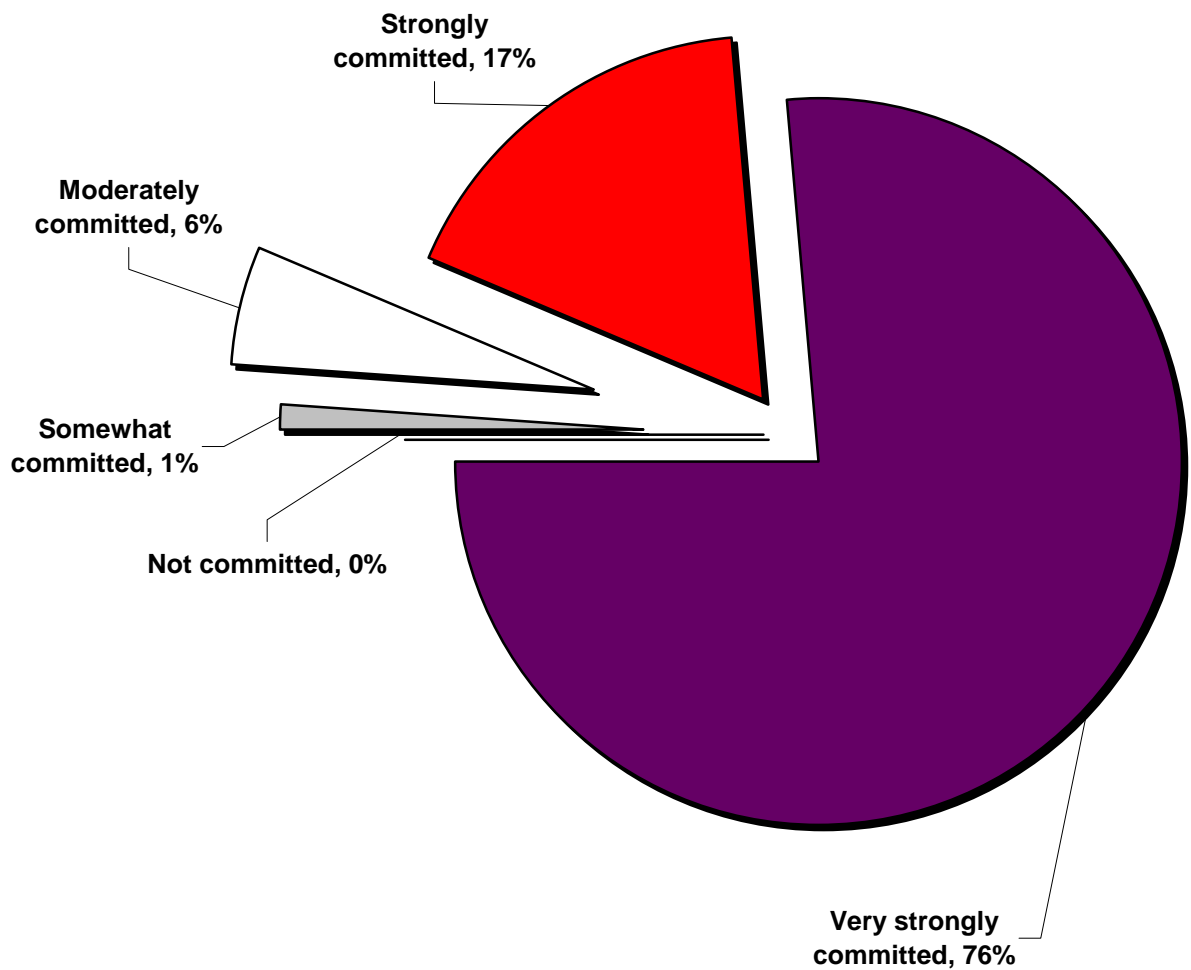


## ***Section V: Commitment***

**Q-34. How committed are you to finishing your degree? (Full time, n=331)**



**Q-34. How committed are you to finishing your degree? (Part time, n=71)**



## ***Appendix***

**Q-27: How did you learn about NJIT?/Other**

- High School Programming contest
- At job
- Career consultant
- Co-workers
- Resident of local area
- Staff/employee
- US News

**Q-32a: Was NJIT your first choice? If not, name of first choice (All students):**

NYU	3	Duke University	1
Penn State	3	Georgetown Law Center	1
Rochester Institute of Technology	3	Harvard University	1
University of California	3	Iowa State University	1
University of Colorado	3	Johnson School at Cornell	1
University of South Carolina	3	Lubin School of Business	1
Wayne State University	3	Marist College	1
California State University, Long Beach	2	Northwestern University	1
Cleveland State University, Ohio	2	Ohio State University	1
Drexel University	2	Polytechnic University	1
Northeastern University	2	Rensselaer Polytechnic Institute	1
Purdue University	2	Temple University	1
San Diego State University	2	Texas A&M University	1
San Jose State University	2	University of Buffalo	1
Stanford University	2	University of Florida	1
University of Houston	2	University of North Carolina	1
University of Notre Dame	2	University of Pittsburgh	1
University of Washington	2	University of Wisconsin, Madison	1
Boston University	1	Utah State University	1
California State University, Sacramento	1	Virginia Tech	1
Case Western Reserve University	1	Wichita State University, Kansas.	1
Catholic University of America	1	Worcester Polytechnic Institute	1
City College of New York	1	Yale Business School	1
Cooper Union	1		