

NH MS4 Stormwater Permit



GREEN INFRASTRUCTURE & BROWNFIELDS BOOTCAMP

Oct 20, 2017

Ted Diers (slides courtesy of Barbara McMillan),
NH Department of Environmental Services



MS4?

Municipal Separate Storm Sewer System



New Hampshire



Waterbodies

- Ocean, Lakes, Ponds
- Rivers

Political Boundaries

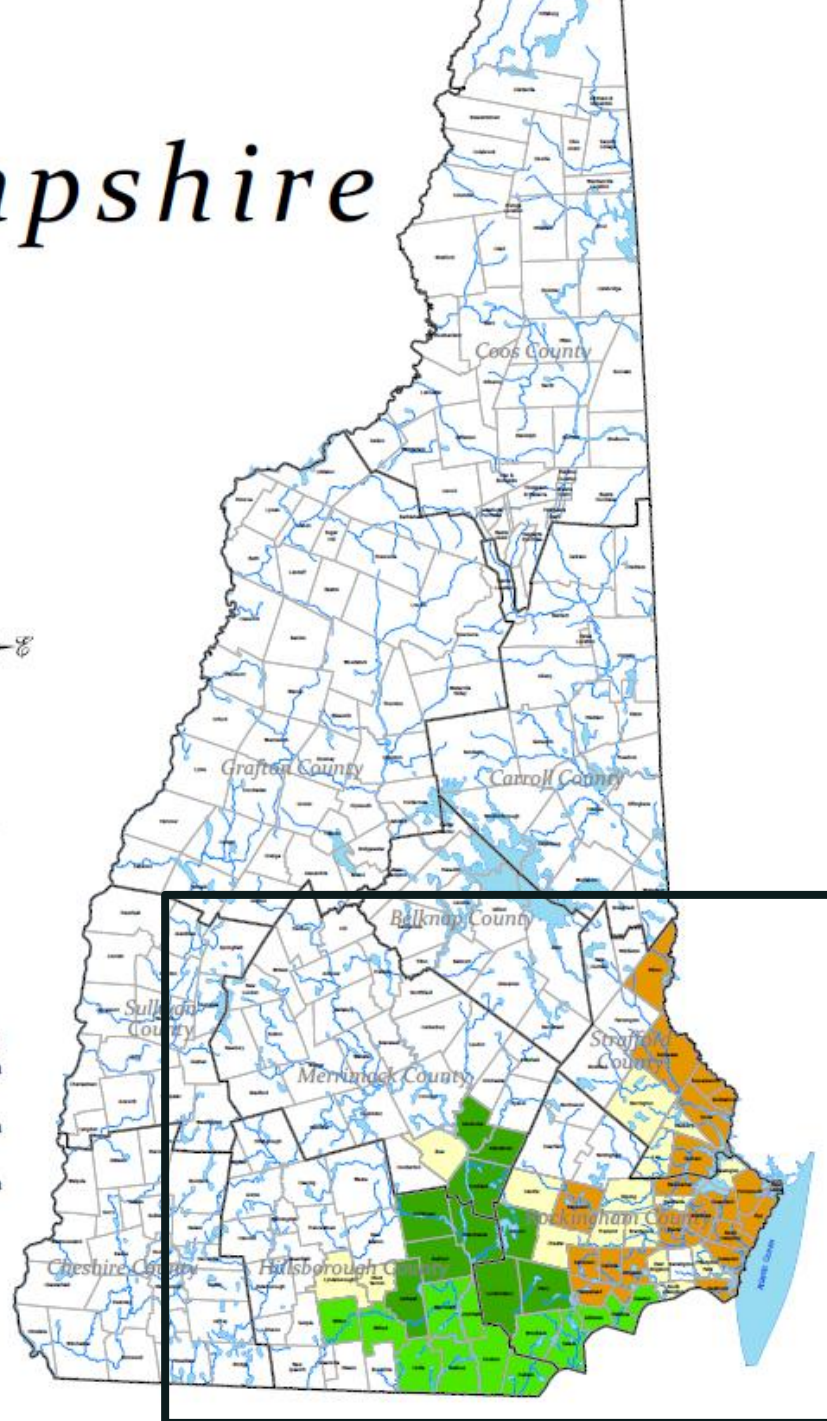
- County
- Town

NH MS4s


- Manchester Regional Stormwater Coalition
- Nashua Regional Stormwater Coalition
- Seacoast Regional Stormwater Coalition
- Waivers Granted




0 2.75 5.5 11 16.5 22 Miles
Map provided for informational purposes only. Not for navigation.




Waterbodies

 Ocean, Lakes, Ponds


 Rivers


Political Boundaries


 County


 Town

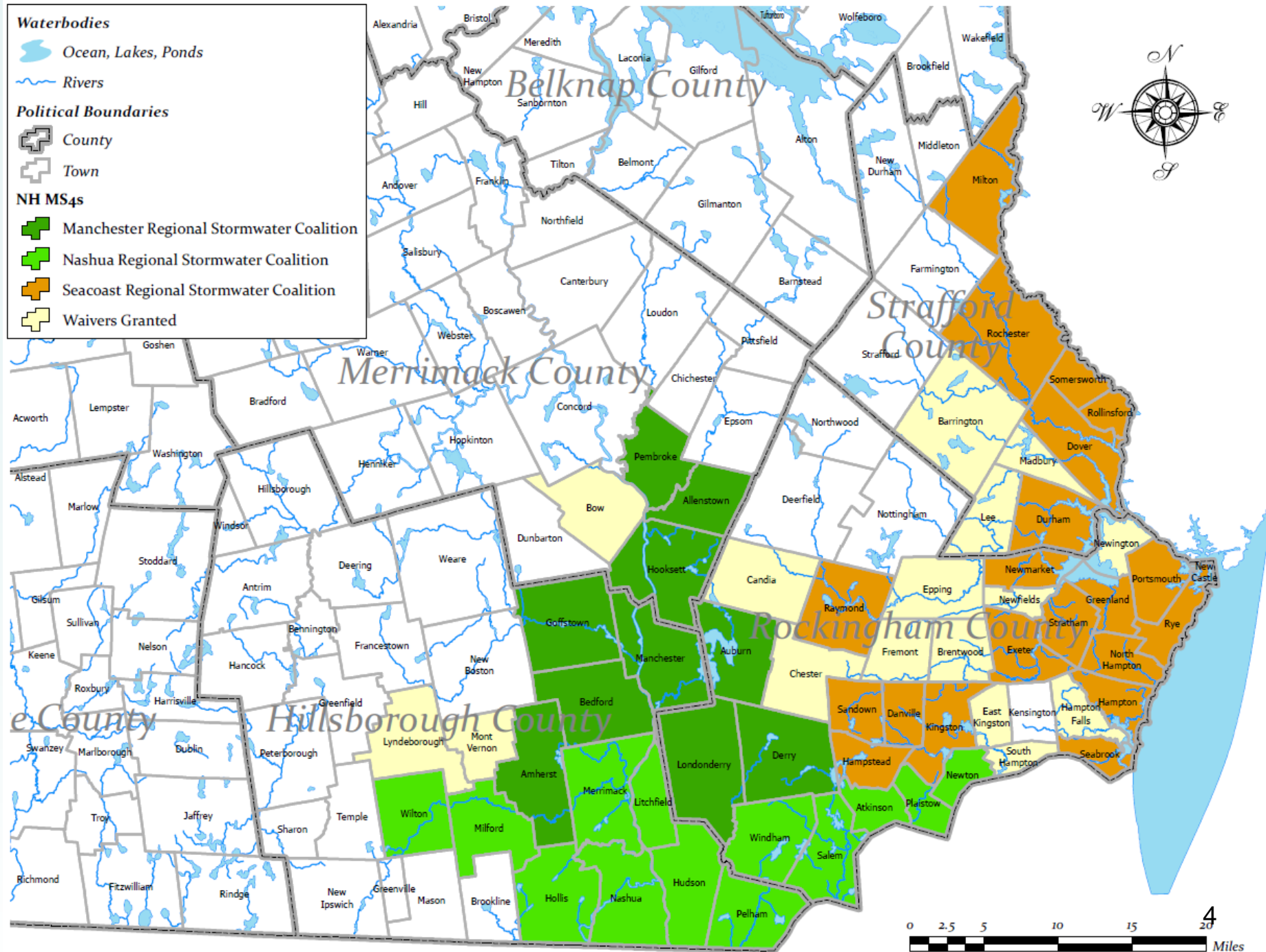
NH MS4s

 Manchester Regional Stormwater Coalition

 Nashua Regional Stormwater Coalition

 Seacoast Regional Stormwater Coalition

 Waivers Granted

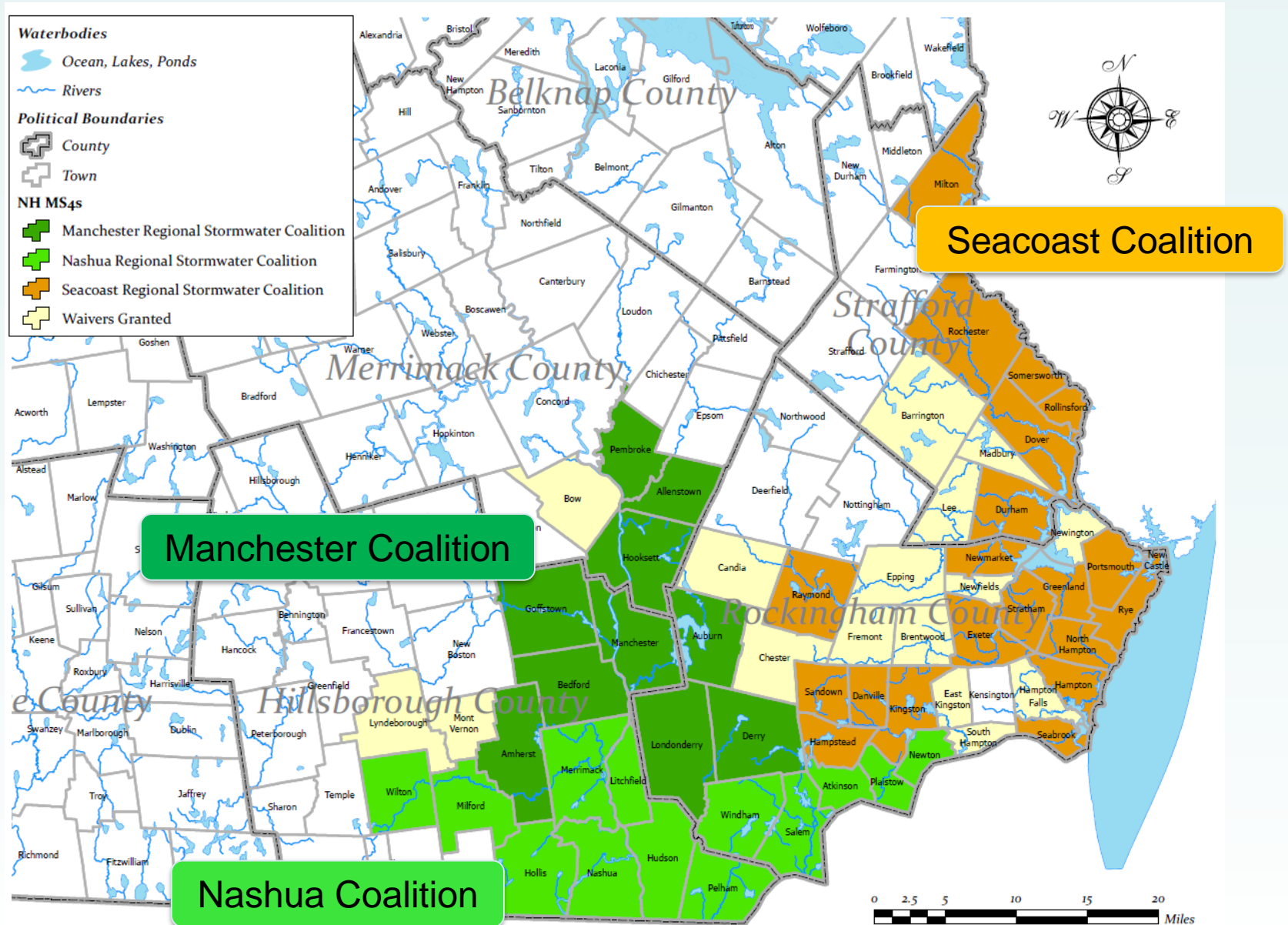


Who is Doing the Work?

How the heck am I going to meet these crazy stormwater permit requirements?



Stormwater Coalitions



Providing Assistance

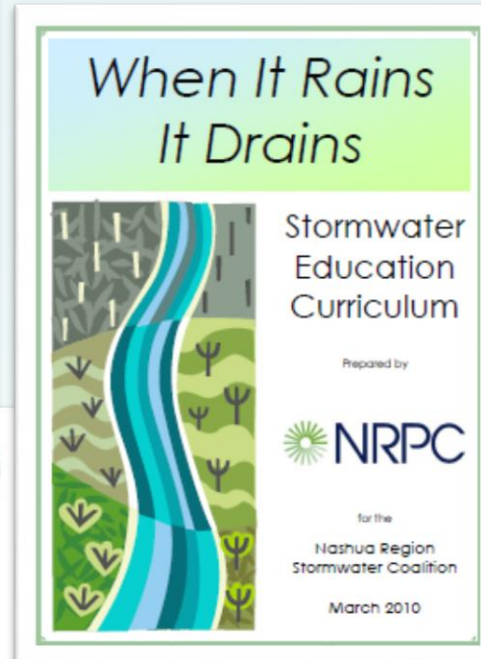


Permit Requirements:

Six Minimum Control Measures

1. Public Education and Outreach
2. Public Involvement and Participation
3. Illicit Discharge Detection and Elimination
4. Construction Site Storm Water Runoff Control
5. Post Construction Management
6. Pollution Prevention and Good Housekeeping

1. Public Education and Outreach



1. Public Education and Outreach

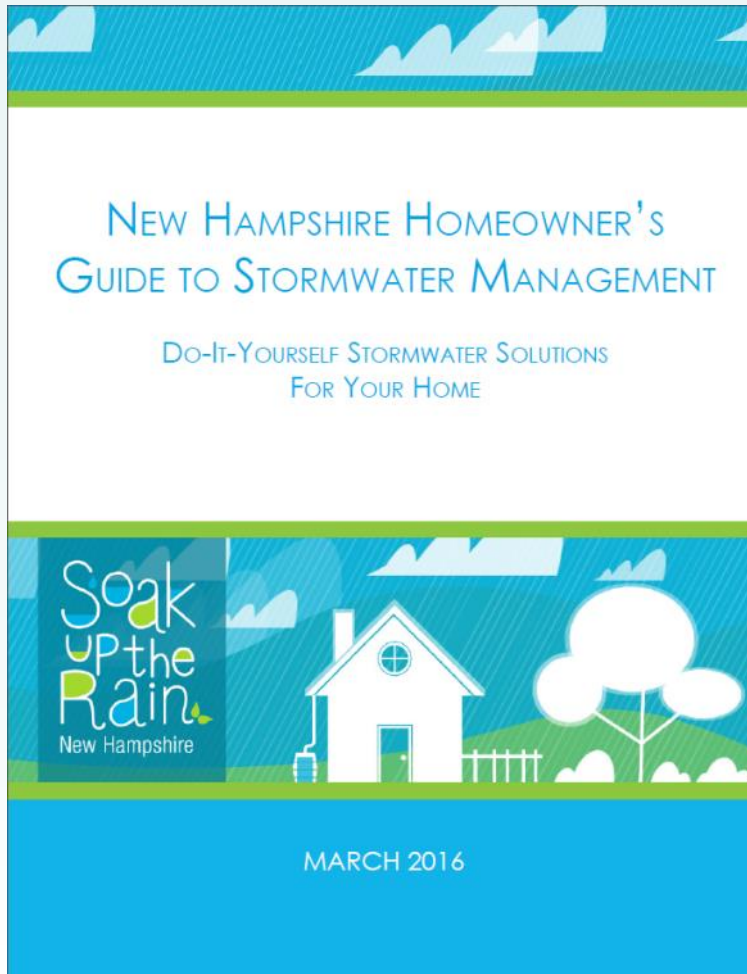


Residential Stormwater



Stormwater Management Practices

- 1.
- 2.
- 3.
- 4.
- 5.
- 6.
- 7.
- 8.
- 9.
- 10.





Participating in Soak Up the Rain

Everything in
Between

Full Scale
Assessment
& BMP
Installation
Program

Outreach &
Education
Only



How can SOAK NH help MS4s?

Permit Requirements - Outreach



Stormwater
Impacts

Impaired
Waters



Four Audiences

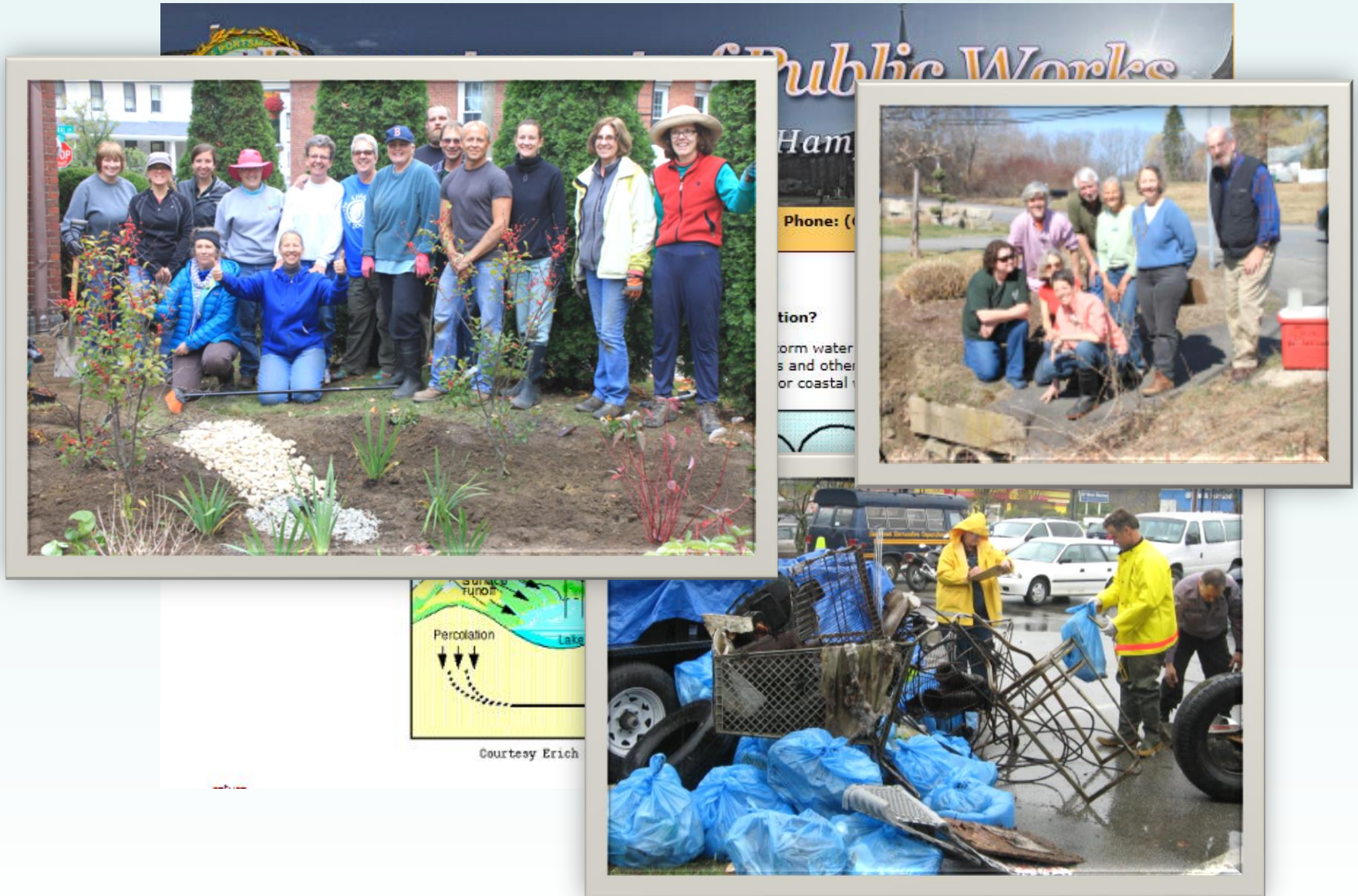
- 1) Residents
- 2) Businesses
- 3) Developers
- 4) Industrial



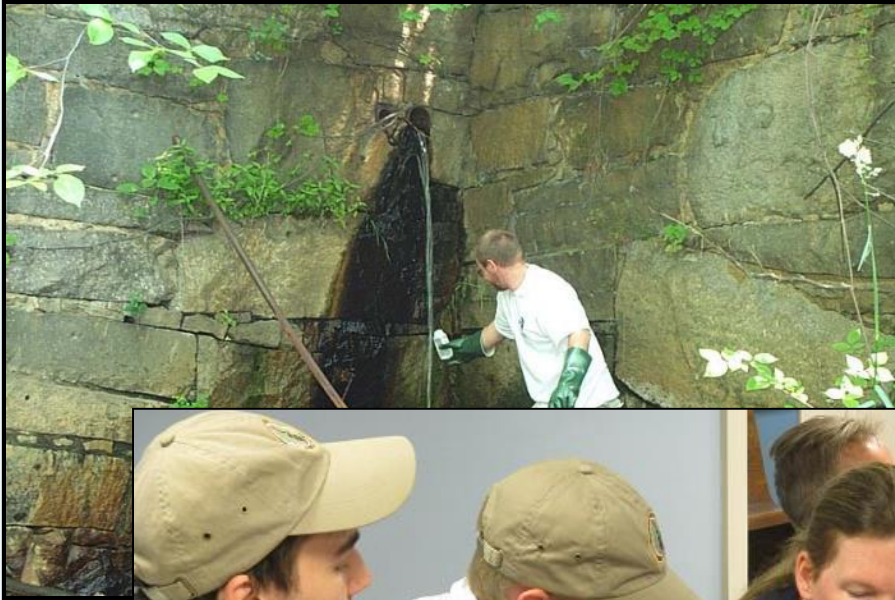
Focused
Messages

2 each
year

2. Public Participation/Involvement



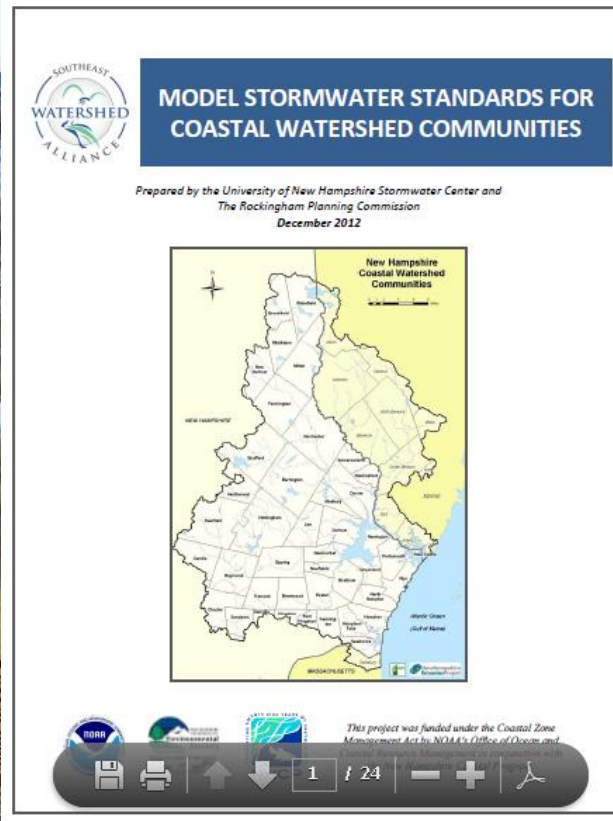
3. Illicit Discharge Detection and Elimination



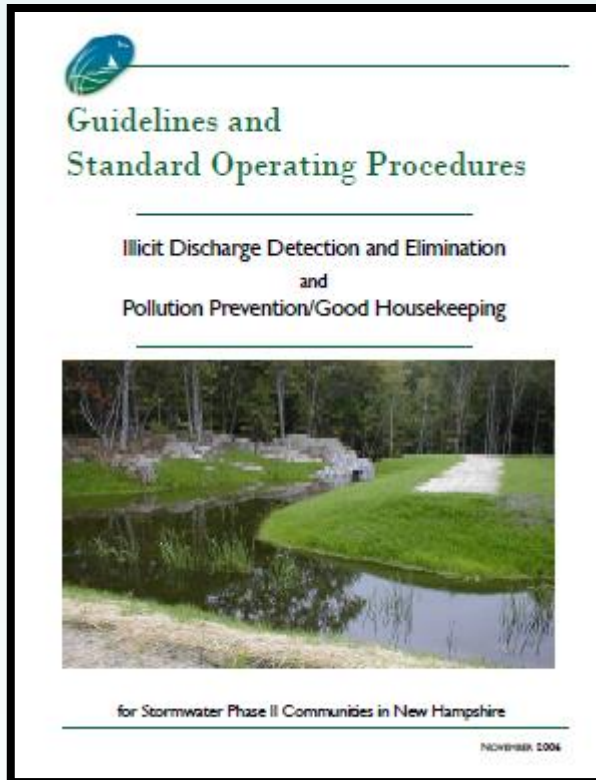
4. Construction Site Runoff Control



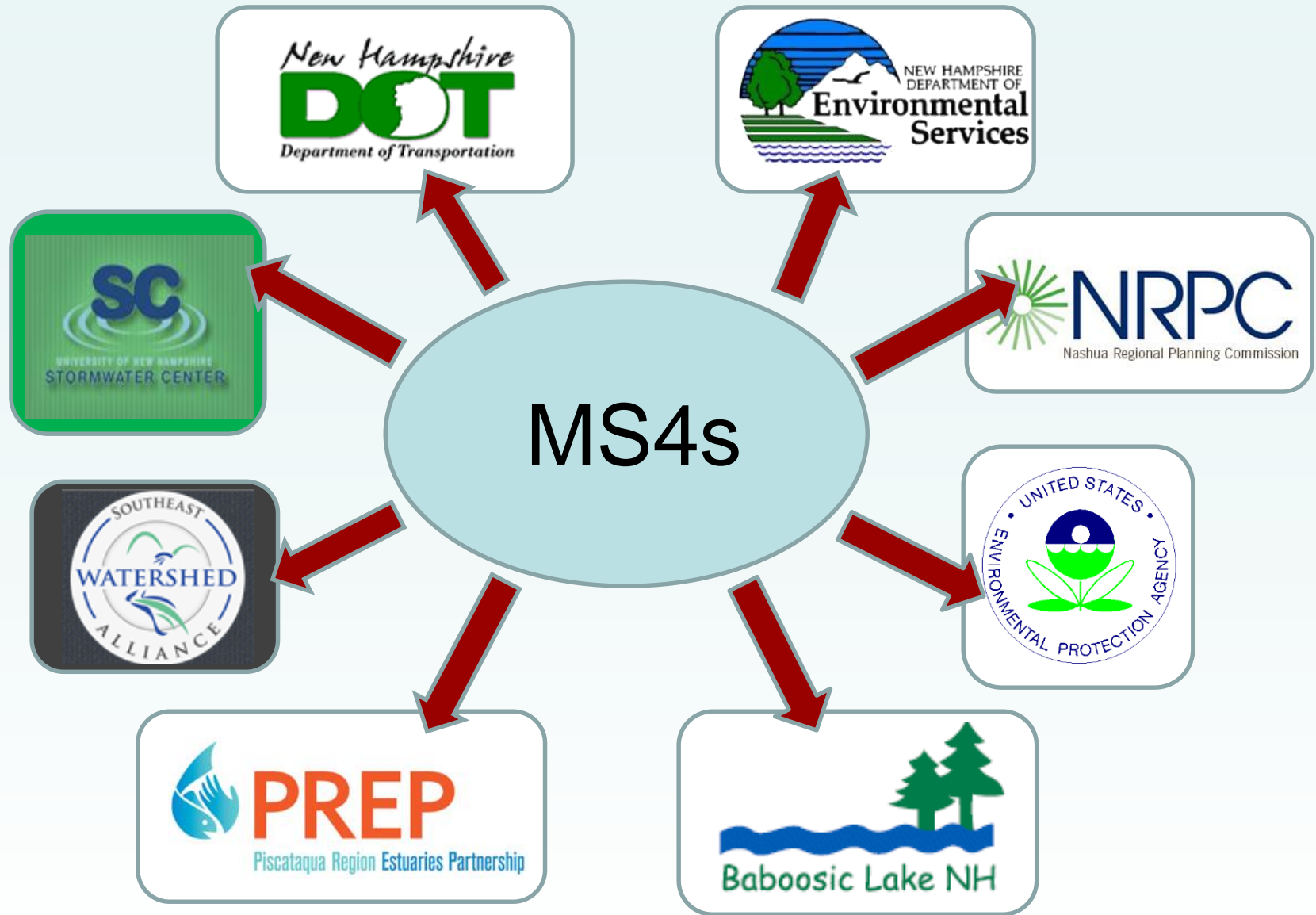
5. Post Construction Runoff Control



6. Pollution Prevention/good Housekeeping



Providing Assistance



TMDLs and Impaired Waters

- More monitoring
- More planning
- Specific actions
- Best Management Practices

2014 AUIDs

Color by last digit

- 0
- 1
- 2
- 3
- 4
- 5
- 6
- 7
- 8
- 9

No Impairment

Roads

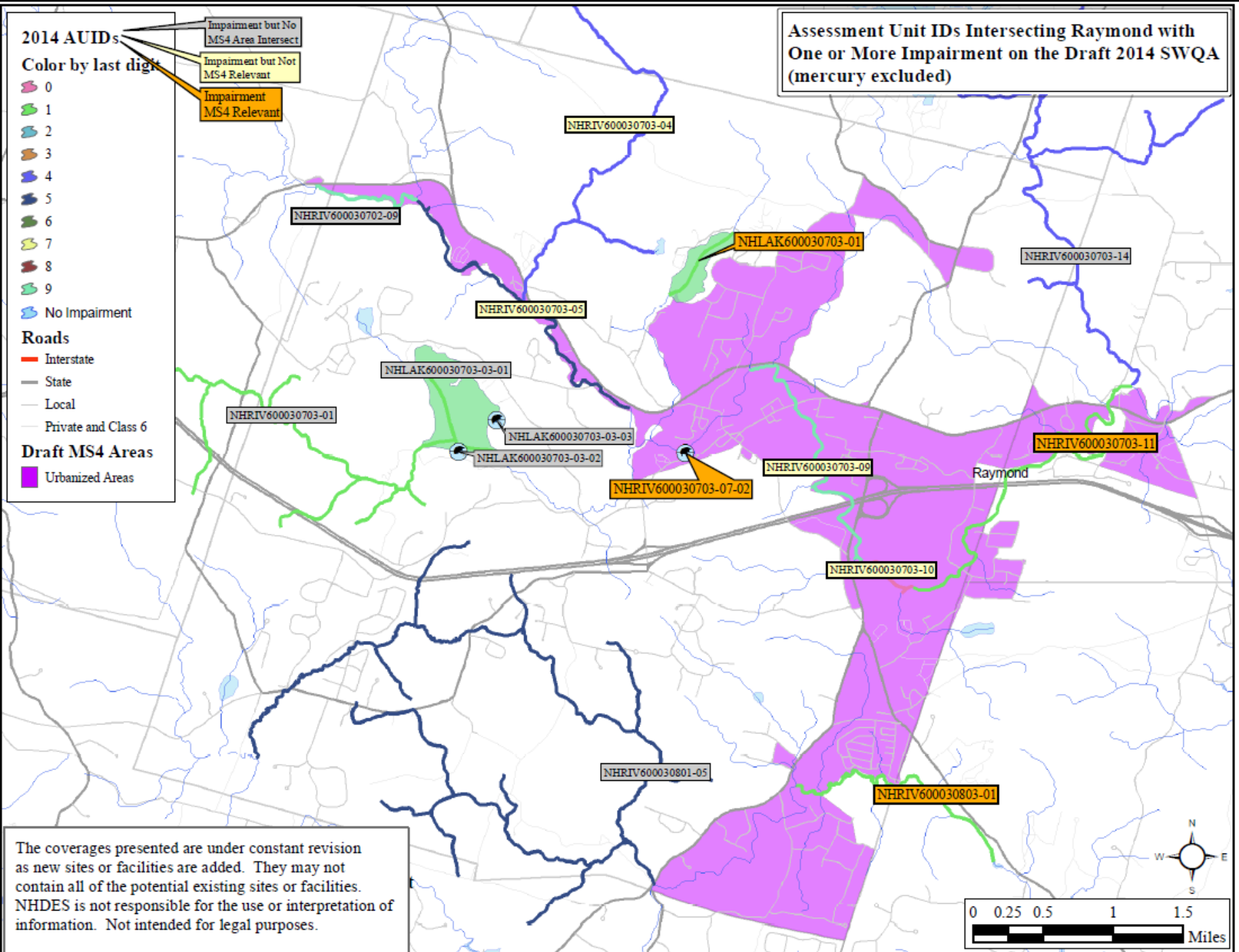
- Interstate
- State
- Local
- Private and Class 6

Draft MS4 Areas

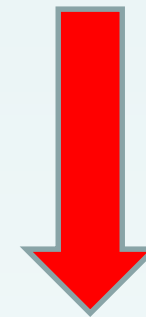
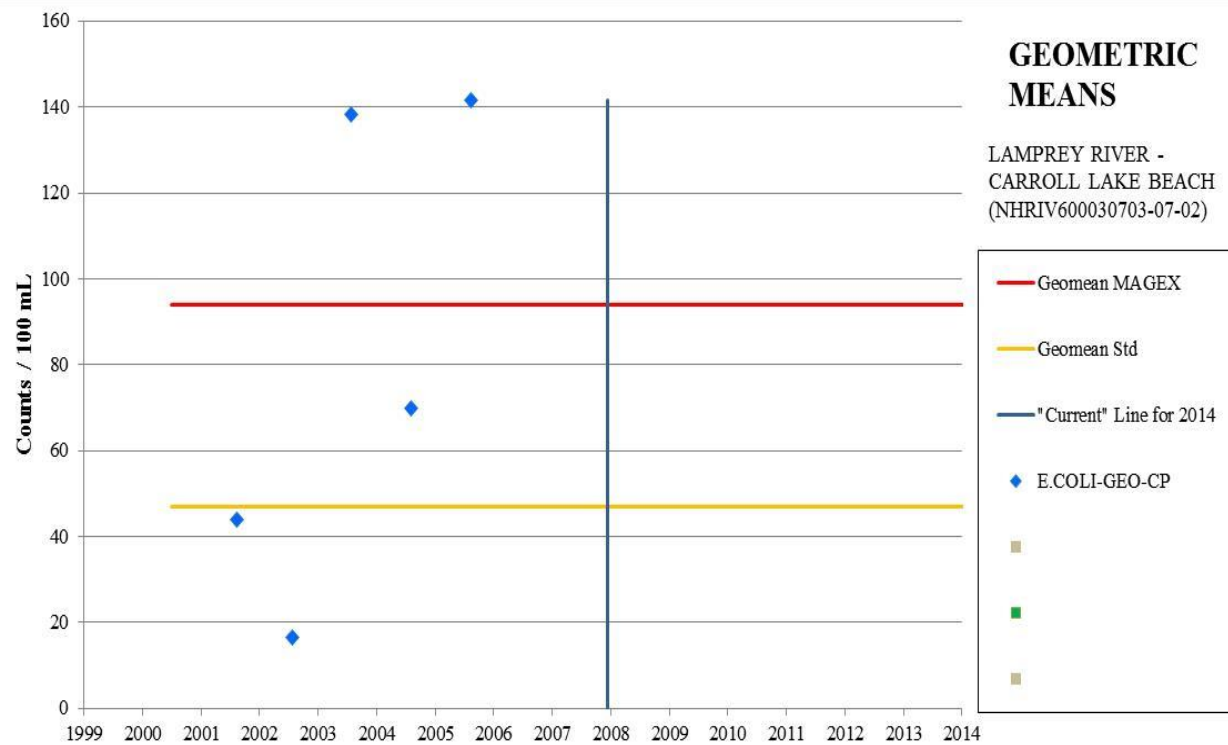
- Urbanized Areas

- Impairment but No MS4 Area Intersect
- Impairment but Not MS4 Relevant
- Impairment MS4 Relevant

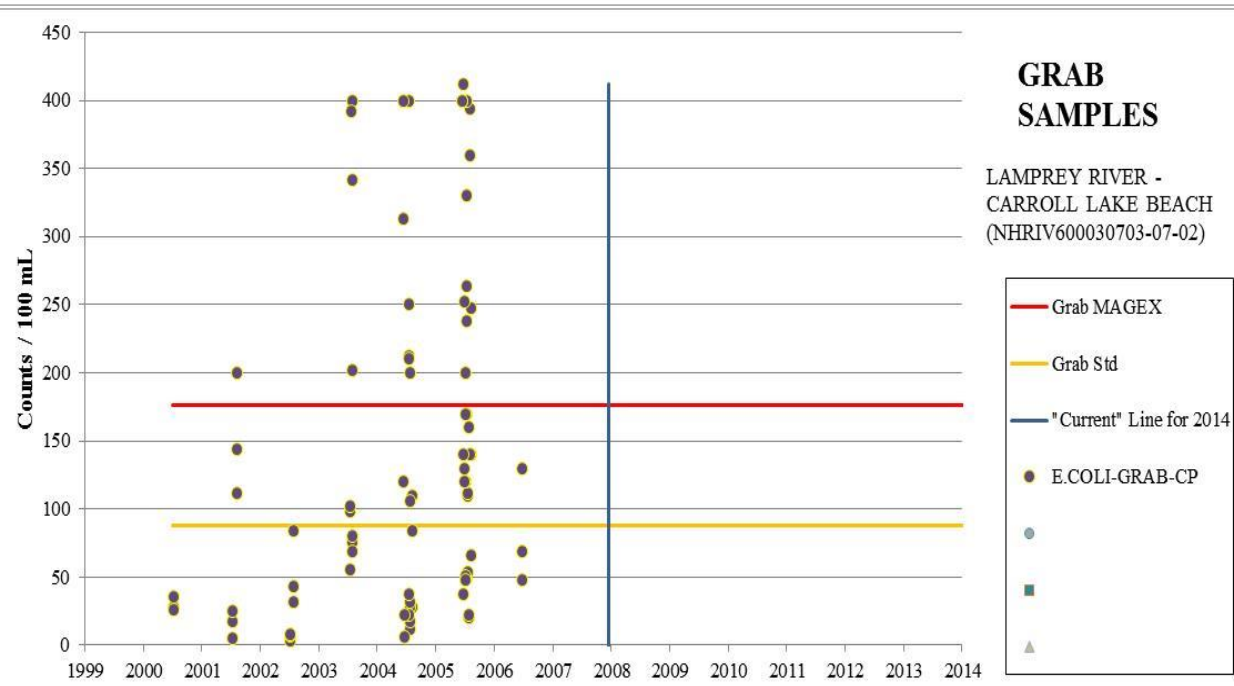
Assessment Unit IDs Intersecting Raymond with One or More Impairment on the Draft 2014 SWQA (mercury excluded)

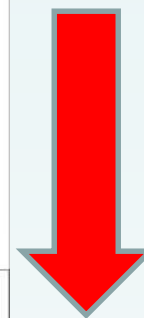
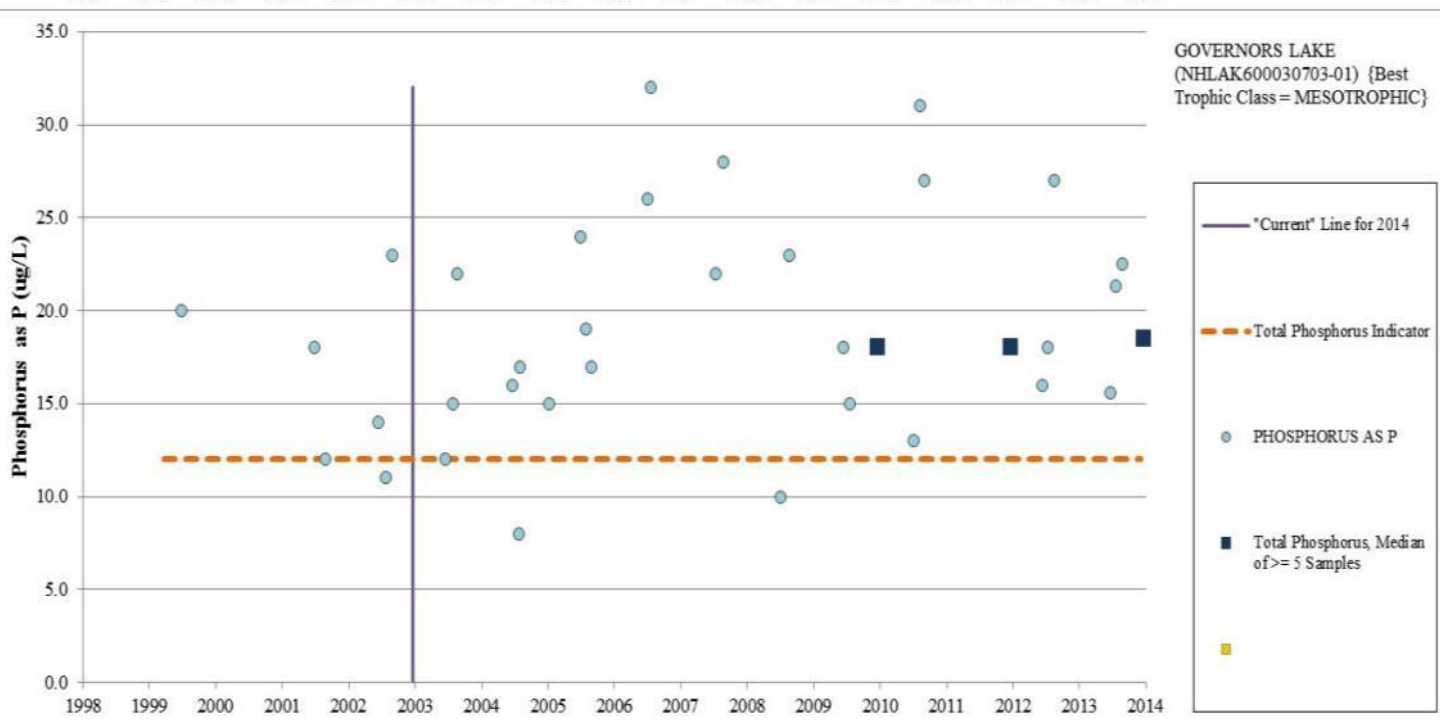
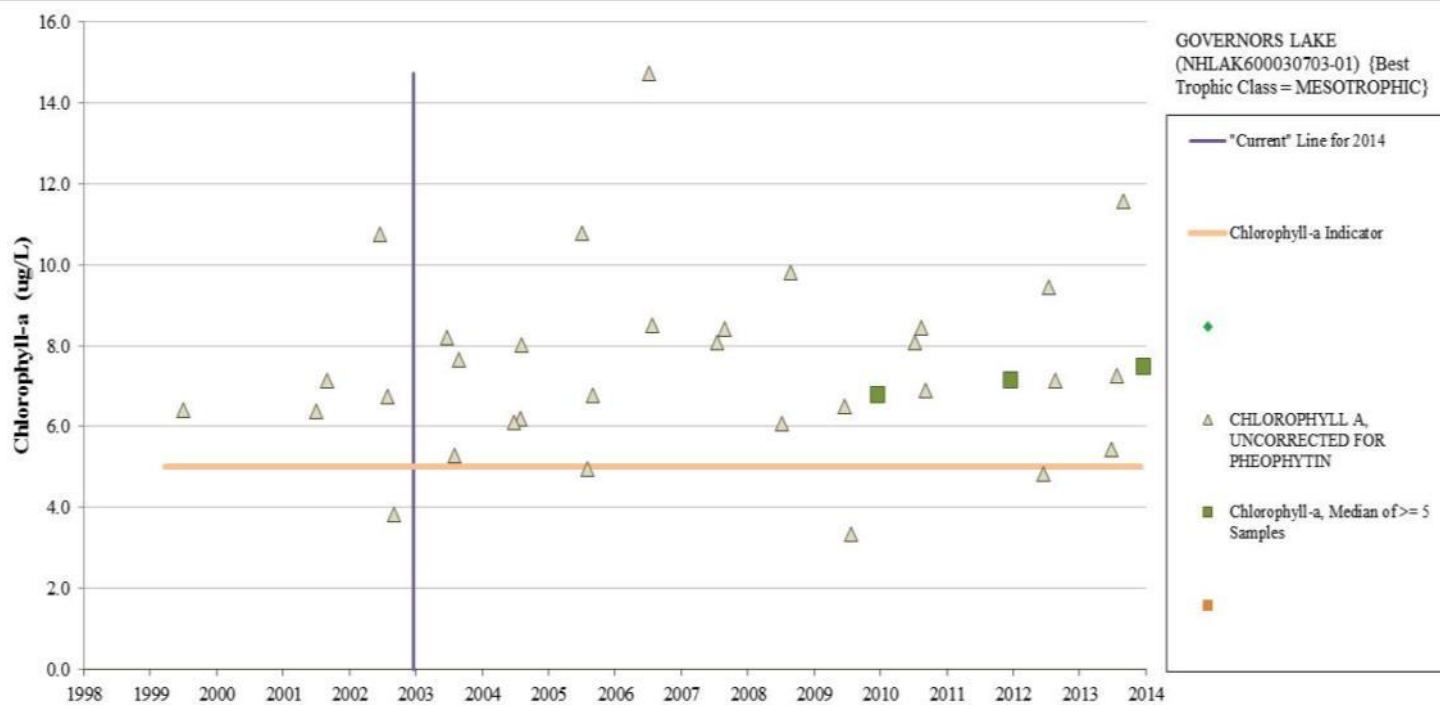


The coverages presented are under constant revision as new sites or facilities are added. They may not contain all of the potential existing sites or facilities. NHDES is not responsible for the use or interpretation of information. Not intended for legal purposes.



67%





46%

Direct drainage
- Non-MS4
239.8 Acres

Direct
drainage - MS
47.2 Acres

Questions?



Baboosic Lake –Baboosic Lake Association



NH Department of Environmental Services

Ted Diers, 271-3289 Ted.Diers@des.nh.gov

Barbara McMillan, 271-7889 barbara.mcmillan@des.nh.gov