

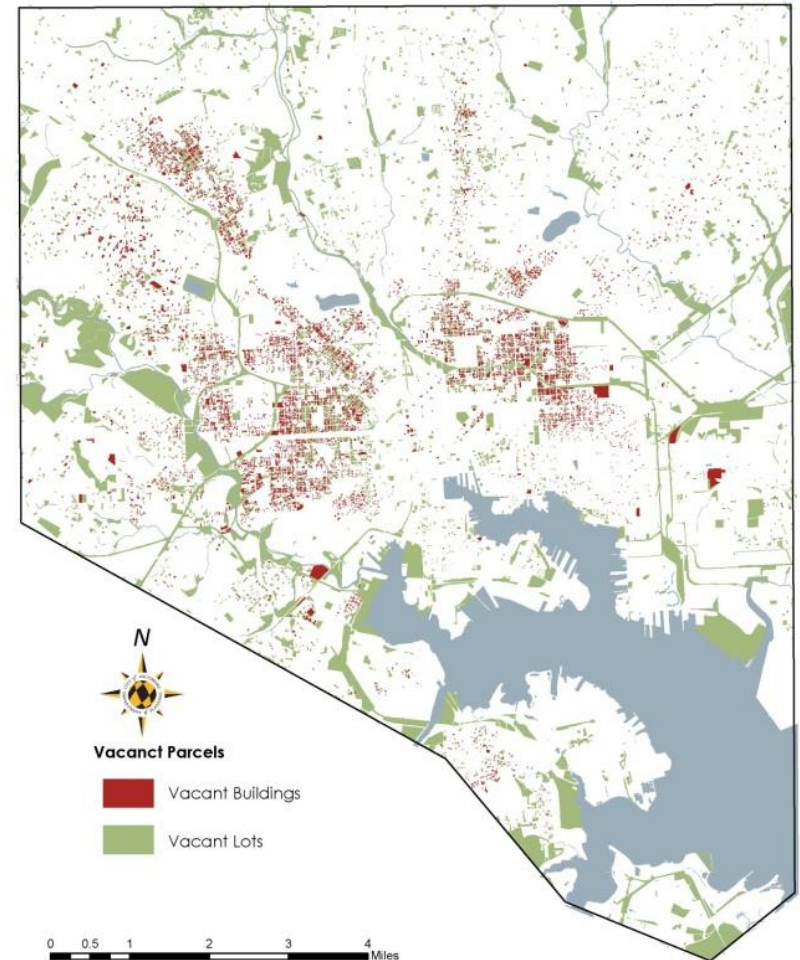
City of Baltimore, Planning Department Brownfields Community-Wide Assessment Grant Overview

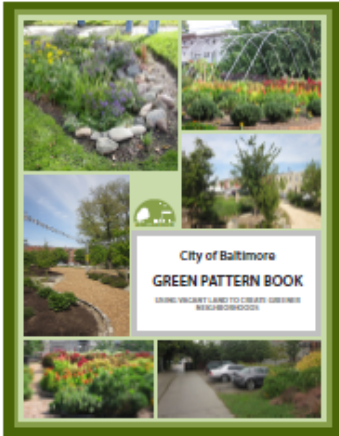
Abby Cocke, Environmental Planner



Snapshot of Baltimore Vacancy...

- 30,000 vacant properties (14,000 vacant lots + 16,000 vacant bldgs)
- Only 25% owned by the City
- Vacant properties concentrated in east, west, and northwest neighborhoods





The Green Pattern Book will be the tool used to guide the greening of vacant land by City agencies, NGOs, community-based organizations, and individual residents.

The Green Pattern Book includes the following:

- **Visioning:** Definitions and images of local examples of the various green types help users envision how these practices could enhance Baltimore’s neighborhoods.
- **Site selection:** Base level of technical guidance about site factors considered in the selection and implementation of various green types.
- **Guidelines:** Guidance on the process of implementing greening practices, including which City agencies need to be involved, what types of permits may be required, etc.
- **Resources:** Local organizations that can provide resources and support, and where groups and organizations can seek grants and other sources of funding to implement their projects.



Clean and Green

Clean and Green is a temporary land-holding strategy: vacant land is kept free of trash and mowed on a regular basis – sometimes improved with new soil and grass, a few trees, and possibly a fence.



Community Managed Open Spaces

Community-managed open spaces (CMOS) are neighborhood spaces adopted, created, and cared for by community members or organizations.



Urban Agriculture

Urban agriculture is the growing of vegetables, herbs, and fruits in fields or hoop houses, and can also involve aquaculture, tree nurseries, the cultivation of flowers or other plants, and animal husbandry.



Stormwater Management

Rain gardens, bioretention areas, and grass swales are all forms of “green” stormwater management.



Green Parking

Green parking differs from traditional asphalt lots by incorporating permeable paving materials, tree planting, and rain gardens that capture stormwater runoff and shade surfaces, thus improving water quality and cooling the parking areas.



Urban Forests and Buffers

An urban forest is land planted primarily with trees to create groves, small woodlands, or even orchards.



Neighborhood Parks

Neighborhood Parks are permanent green space and recreational facilities, and can be phased-in over several years.



Mixed Greens

Mixed Greens are sites that can accommodate more than one green space type, such as community-managed open space with storm water management.



Clean and Green





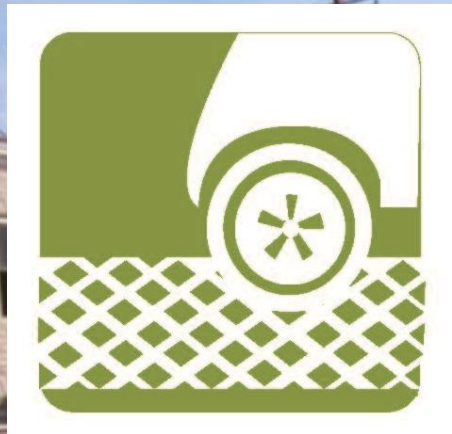
Community-Managed Open Space



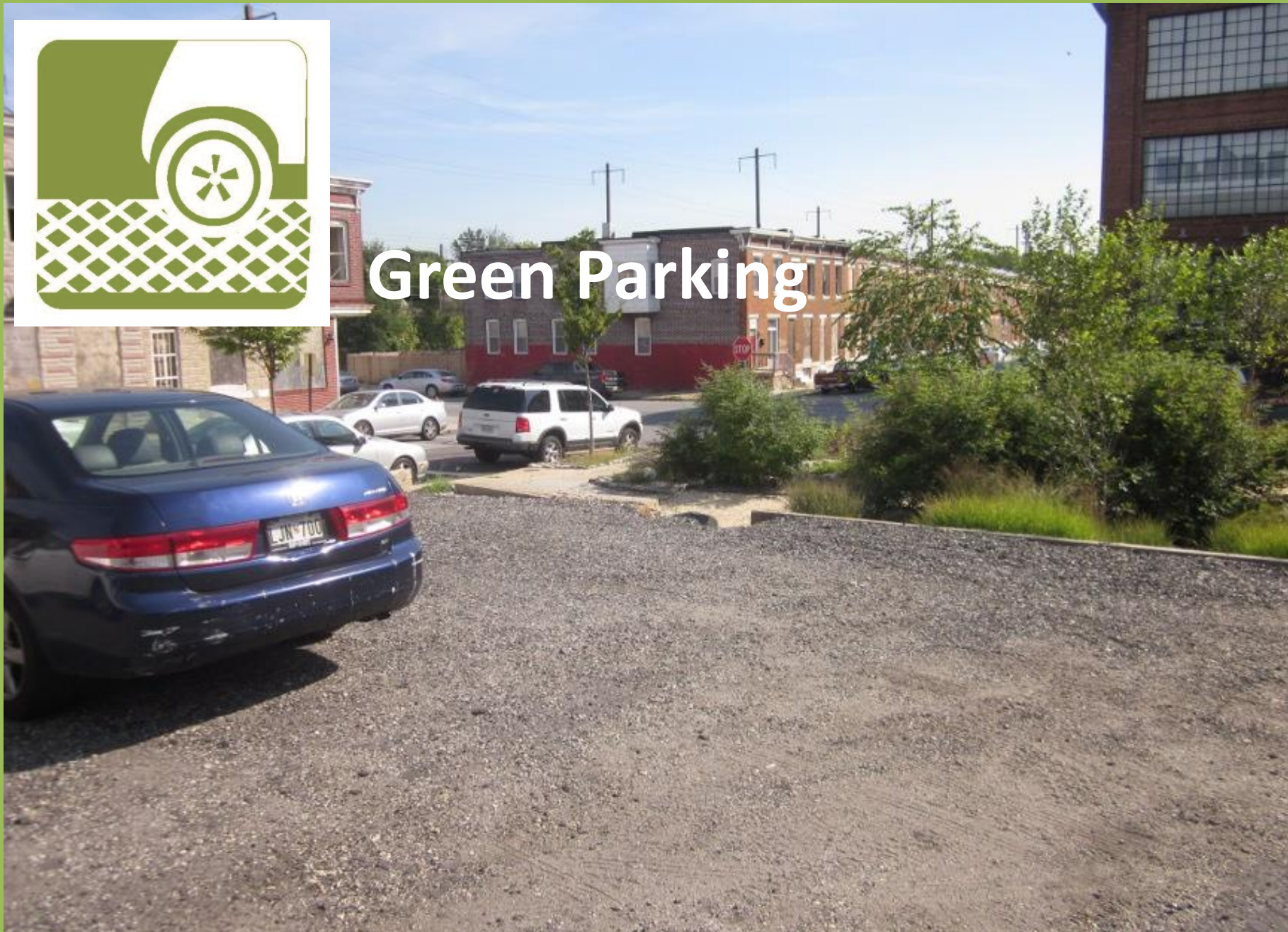


Urban Agriculture





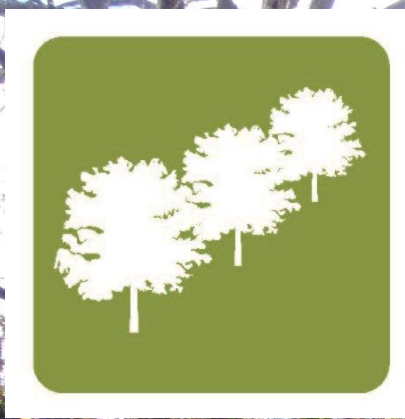
Green Parking





Stormwater Management





Urban Forest and Buffers





Neighborhood Parks





Mixed Greens





Baltimore Green Network Plan

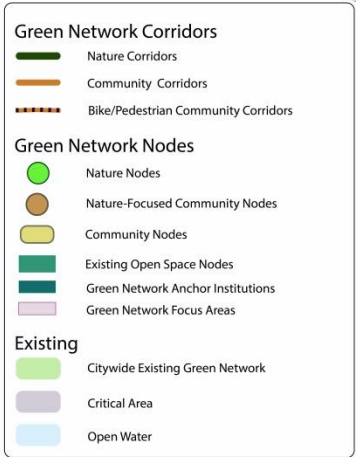
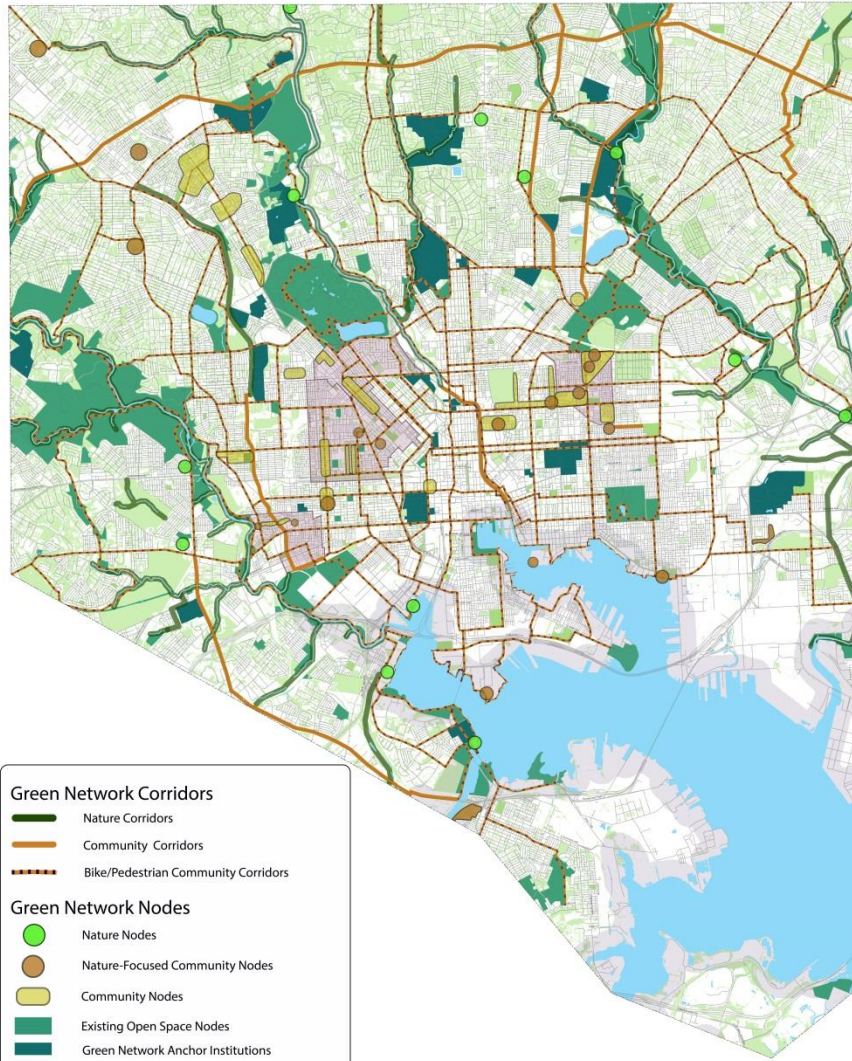
Baltimore City Department of Planning

Green Network Plan Partners

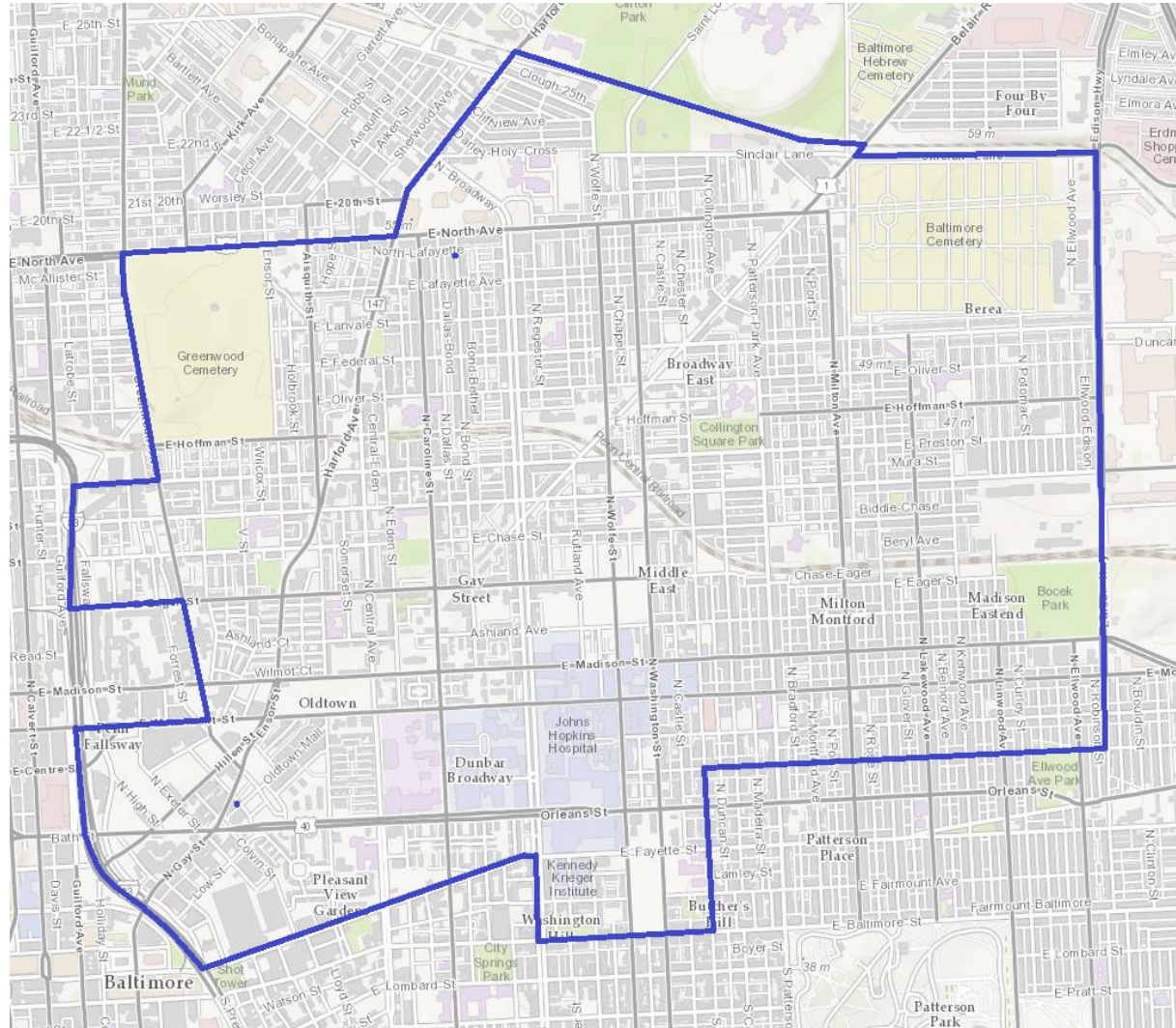


Baltimore City Green Network Vision Plan

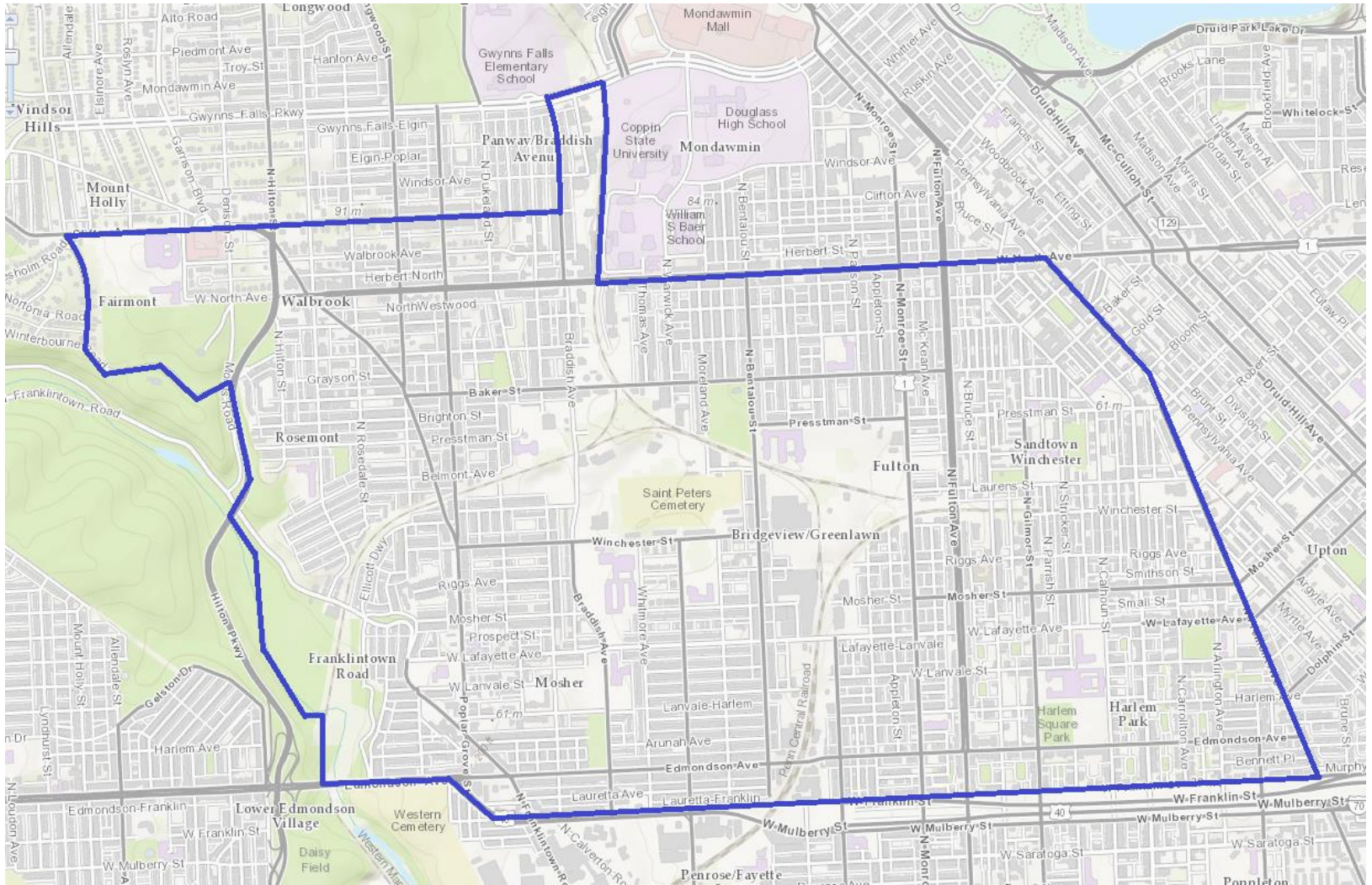
April 11, 2017



Baltimore Brownfields CWA Grant



Baltimore Brownfields CWA Grant



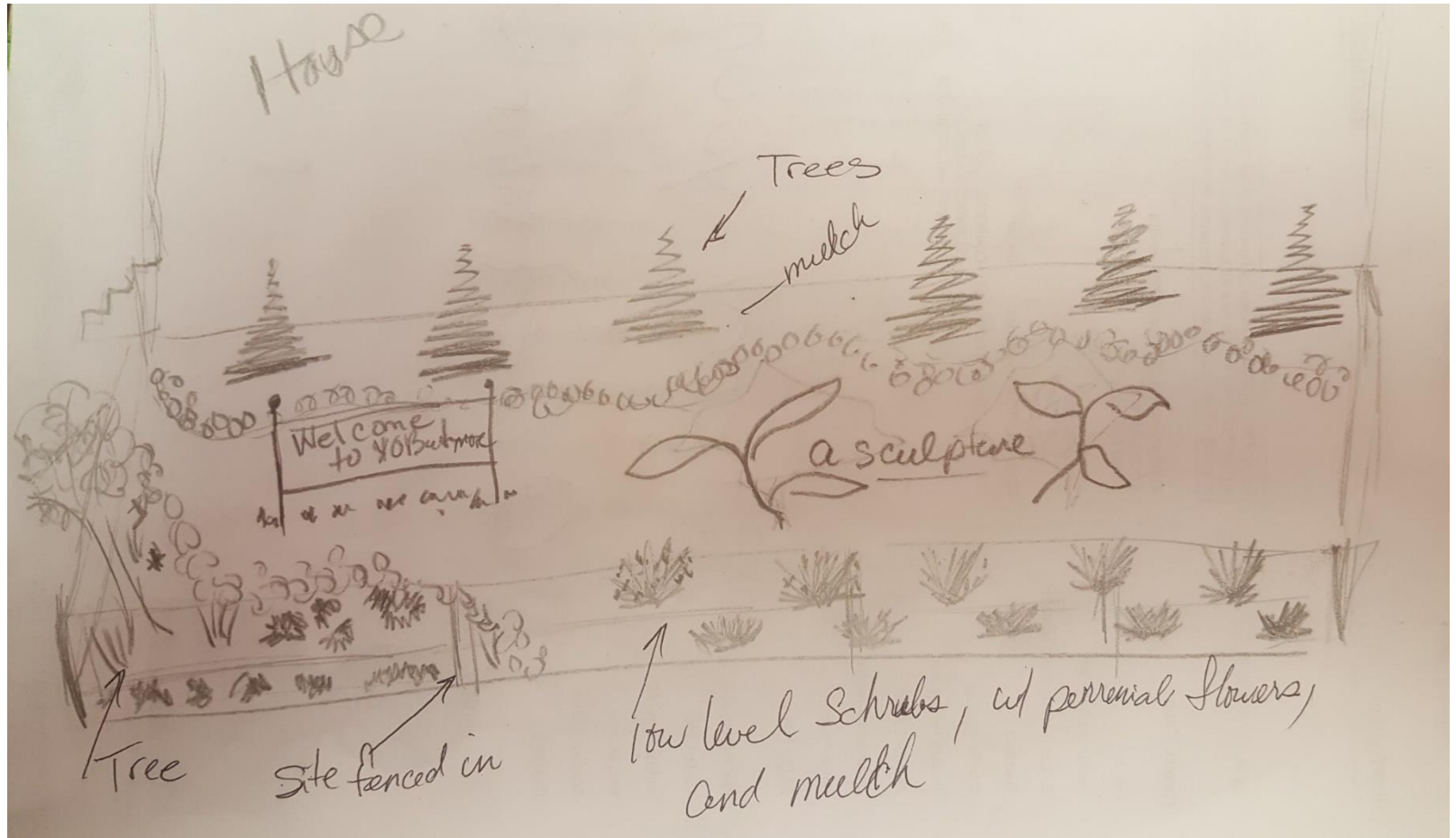
Baltimore Brownfields CWA Grant



1500 Mosher St.



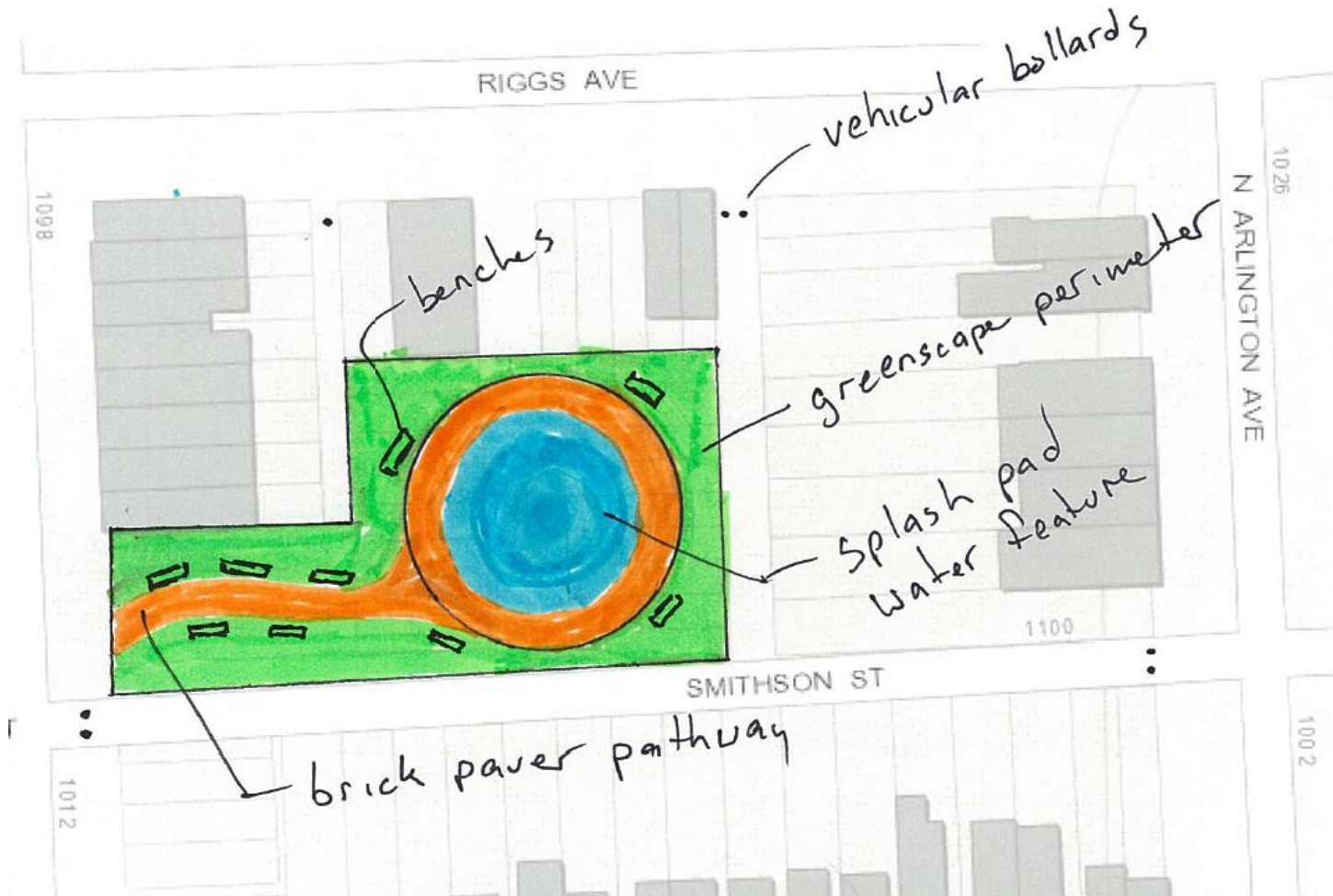
1500 Mosher St.



1000 N. Carrollton Ave.



1000 N. Carrollton Ave.



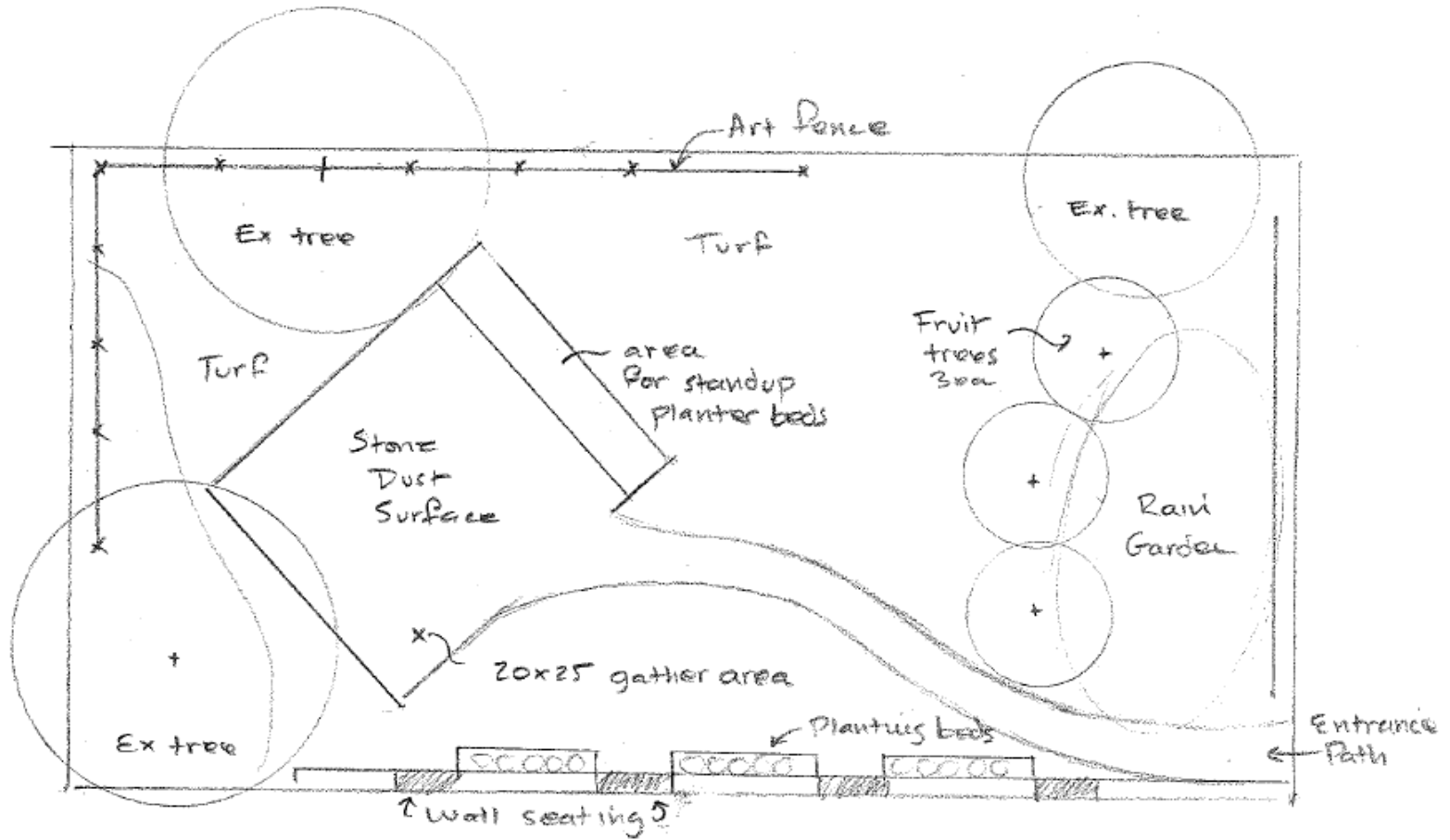
1700 Gorsuch Ave.



1700 Gorsuch Ave.



1700 Gorsuch Ave.



Briscoe Park Seniors Rock

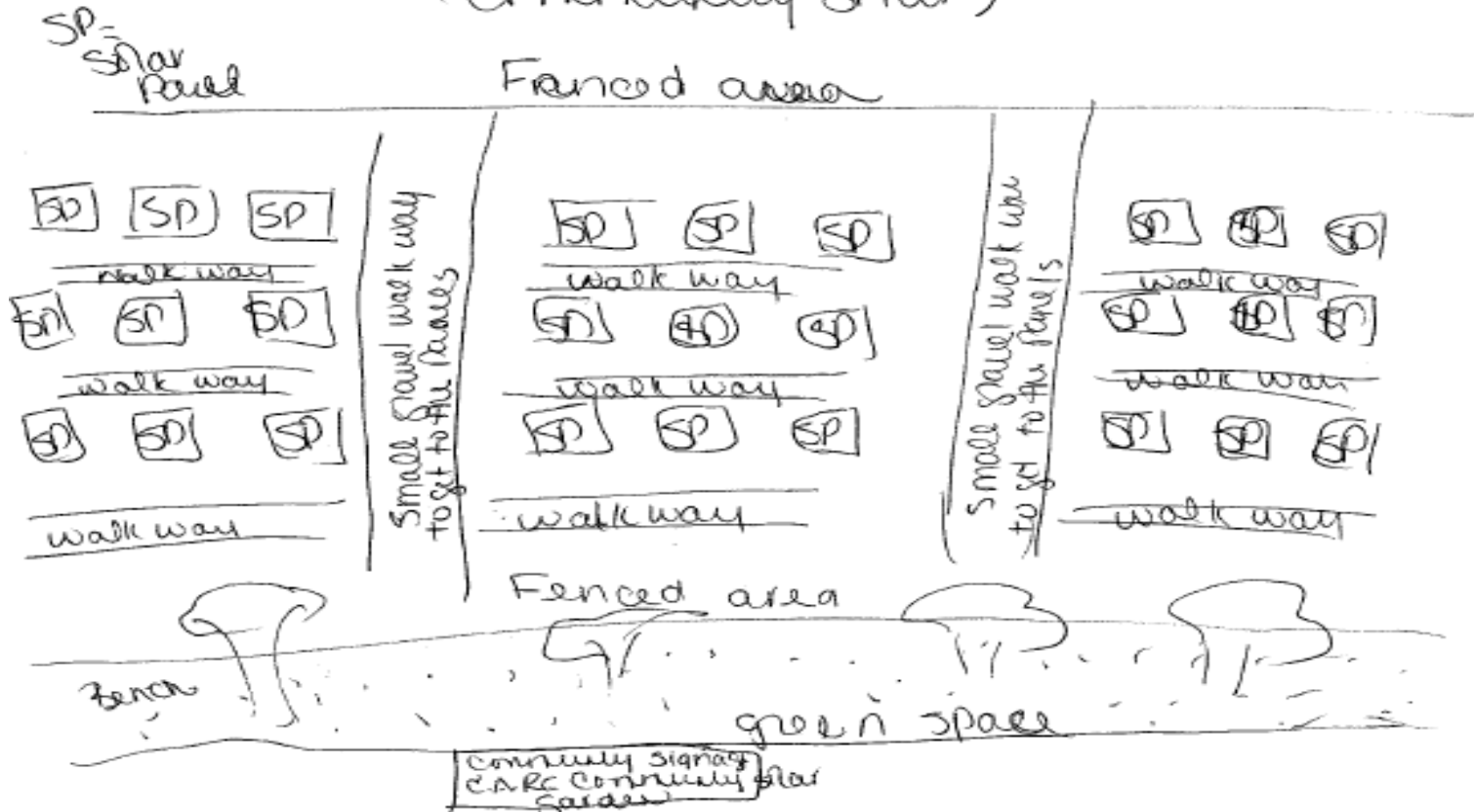
Scale 1"=10'
C Lewis 3-8-18

500 N. Madeira St.



500 N. Madeira St.

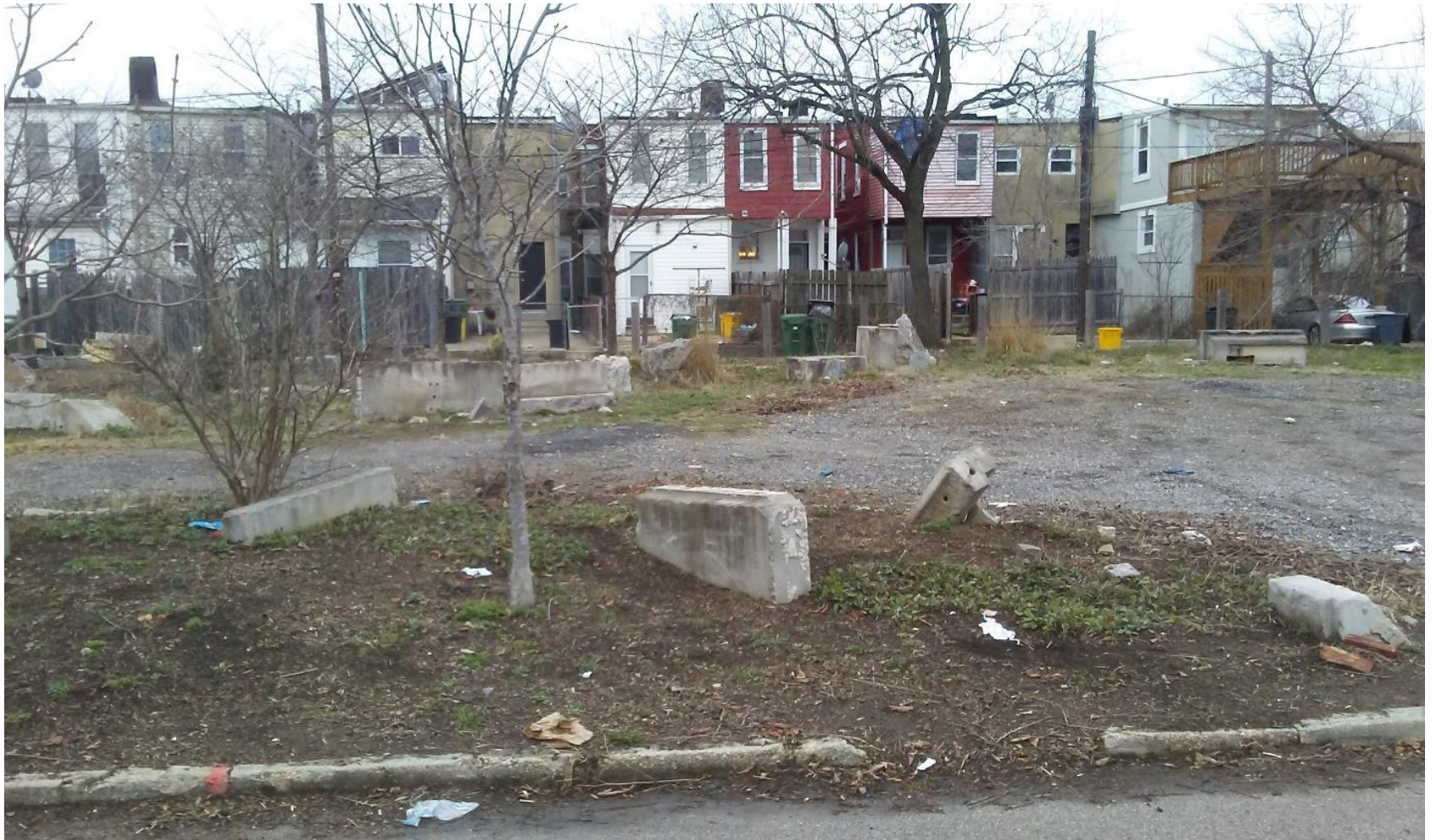
500 block of N. Madeira St concept
(community star)



500 N. Madeira St.



400 N. Madeira St.



400 N. Madeira St.

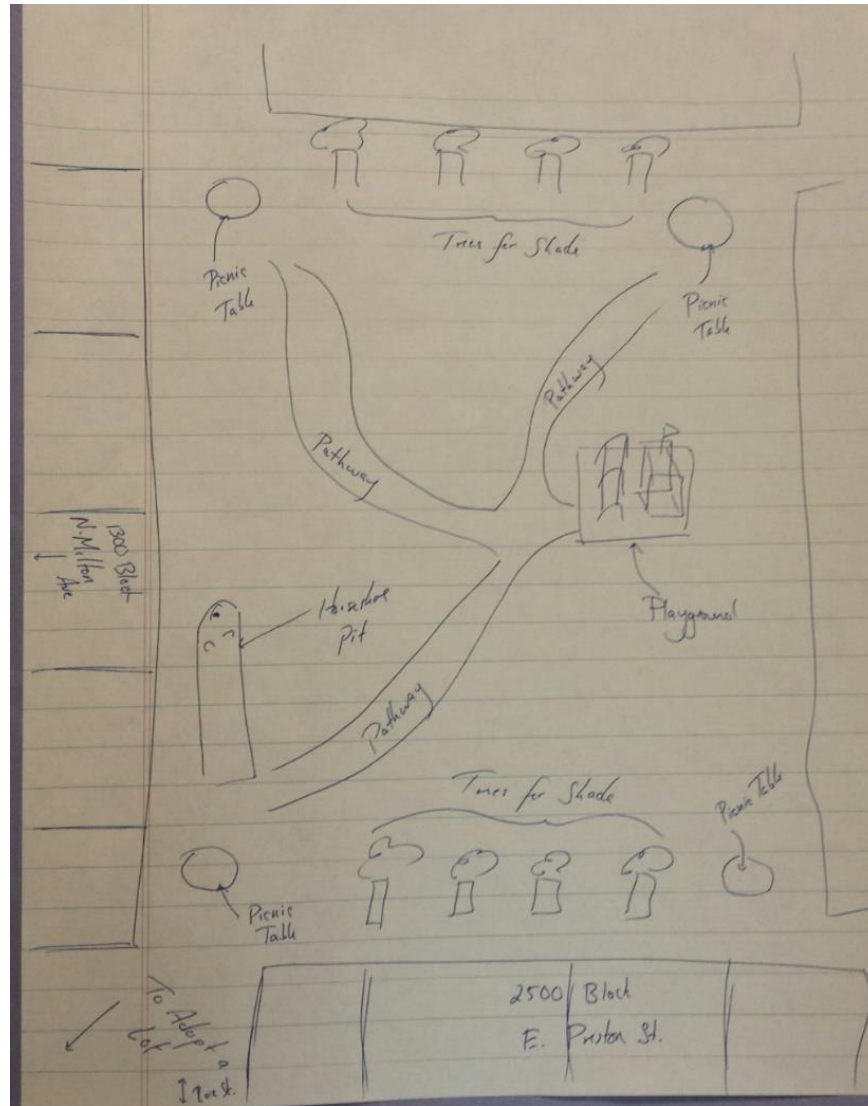


1300 Rose St.



03.23.2018

1300 Rose St.



Questions?

Abby.Cocke@baltimorecity.gov, 443-631-0432

baltimoresustainability.org

facebook.com/baltimoresustainability

twitter.com/sustainbmore

instagram.com/sustainbmore