

Brownfields 101

Presented by:

Gary White

Topics for Today

- Definition of a Brownfield
- Overview of Brownfield Redevelopment Process
- EPA Brownfield Grant Program
- Brownfields as an Economic Development Tool
- NJIT TAB

What is a Brownfield?

“Real property, the expansion, redevelopment, or reuse of which may be complicated by the presence or potential presence of a hazardous substance, pollutant, or contaminant.”

-USEPA

When did this program begin?

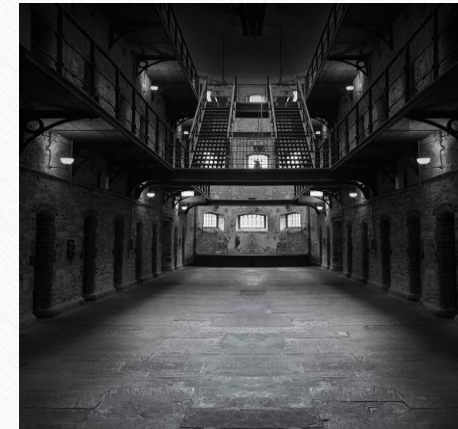
- 1960 – Environmental Concerns Caused by Industry Plague the U.S.
- 1969 – National Environmental Policy Act
- 1970 – Clean Air Act
- 1972 – Federal Water Pollution Control Act Amendments
- 1980 - Comprehensive Environmental Response Compensation, and Liabilities Act (CERCLA)
- 2002 – Small Business Liability Relief and Brownfields Revitalization Act

Where did they come from?

- Scars of industrial past of the 19th Century
- Steel Production
- Abandoned Mine Lands
- Mills



What types of industries generate brownfields?



How many brownfield sites are there?

>500,000



What are the benefits to Brownfield Redevelopment?

- Location efficiency
- Existing infrastructure
- Removes actual and potential sources of land, water and air contamination
- Beautifies urban landscapes
- Reduces urban sprawl
- Preserves greenfield land, which may be productive farmland or environmentally significant land
- Improve public health and safety
- Job creation
- Increase community's resilience



Steps in the Brownfield Redevelopment Process

Site Identification / Planning / Community Involvement



Access/Acquisition & Environmental Investigation



Environmental Remediation



Site Preparation



Redevelopment

Site Identification, Planning, Community Involvement

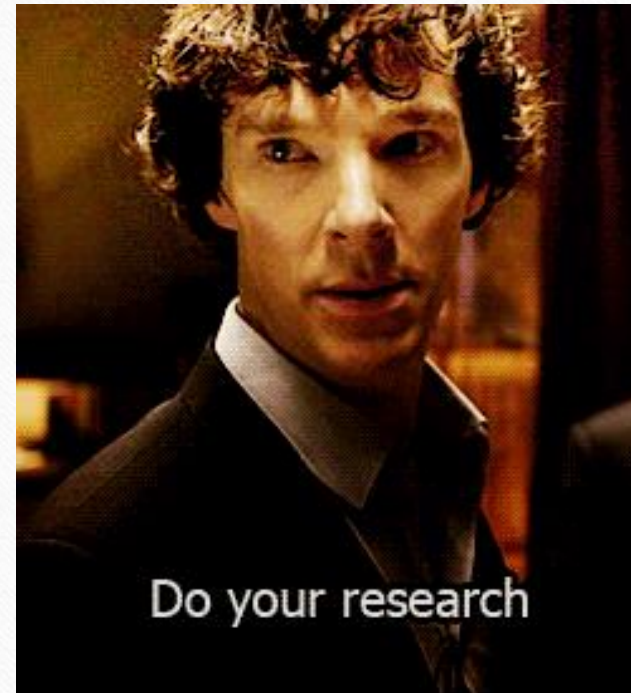
INVOLVE THE COMMUNITY

- Choosing a Champion
- Brownfield Inventory
- Visioning & Community Engagement
- Partnerships



Access, Acquisition, & Environmental Investigation

- Gain Site Access
- How will you acquire the site?
- Necessary for investigations & cleanups



Environmental Investigation

Phase I Preliminary Assessment

What
environmental
issues could we
have?



Phase II Site Investigation

Do we have
contamination or
environmental
issues?



Phase III Remedial Investigation

What is the nature
and extent of our
contamination?

Environmental Remediation

Remedial Action Work Plan (RAWP)

- Actions that will be taken to address identified contamination



Implement RAWP

- Remediate
- Ensure remediation up was effective

Site Preparation

- Permits
- Approvals
- Demolition
- Site Clearing



Redevelopment



What is NJIT TAB ?



TAB is a technical assistance program created by EPA and funded through cooperative agreements with three TAB providers.

TAB providers serve as independent resources to: [state](#), [regional](#), [county](#), [tribal](#), and [local government entities](#), and [nonprofits](#) attempting to cleanup and reclaim brownfields.

➤ **Assistance is *free* of charge!**



TAB provides assistance* throughout the *entire* brownfields redevelopment process.

Assistance is provided through...

- ❖ Resource Center
- ❖ Educational Forums
- ❖ One-on-one Technical Assistance



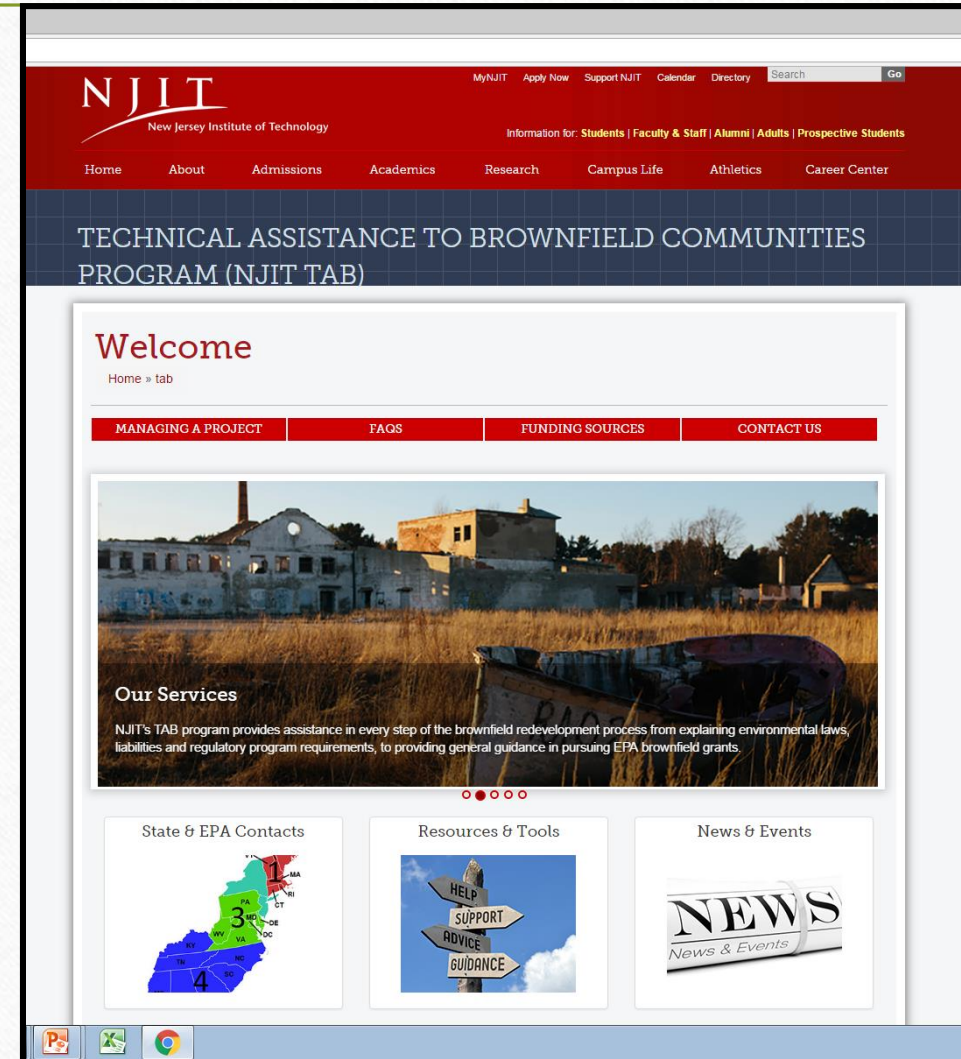
NJIT TAB Resource Center

www.njit.edu/tab

- ❖ info on all aspects of assessing and cleaning up a brownfield site
- ❖ news and upcoming events

Resources and Tools

- ❖ Federal and state funding sources
- ❖ state brownfield programs
- ❖ state and EPA contacts
- ❖ previously recorded webinars
- ❖ downloads of workshop and seminar presentations
- ❖ PCBs brochures; GI decision tree
- ❖ how-to videos



NJIT TAB Hotline

973-642-4165 tab@njit.edu

NJIT TAB Educational Forums

Conferences: pre-conference workshops, learning labs, panel sessions, office hours

Workshops: 2 to 4 hour interactive sessions on brownfield related topics

Seminars: deeper dive into specific brownfield related topics

Brownfield Boot Camps: 4 to 7 hour more intensive, deep dive into specific brownfield related topics

Webinars: range from introducing the TAB program to specific brownfield topics

All-Grantee Meetings: work with state agencies & EPA



NJIT TAB Contact Information

Informal Process for assistance – just call / email / tweet us – there is no contract to sign. All assistance is free to eligible entities.

NJIT TAB Hotline 973-642-4165

<http://www.njit.edu/tab/>

tab@njit.edu

Twitter: @NJITTAB

