

Welcome to the



**NJIT**

**Technical Assistance to Brownfield Communities**

**June 14, 2012**

**Bates Mill Atrium**

**36 Chestnut Street**

**Lewiston, Maine**

# Logistics

- Agenda
  - ▣ Hours: 9:30 AM – 3:30 PM
  - ▣ Lunch
  - ▣ Networking/Breaks
    - If you need to take a break or talk on the phone please feel free to walk outside at any time
- Please set your mobile phones to vibrate
- Evaluation Forms & Interest Forms
- Presentations [www.njit.edu/tab](http://www.njit.edu/tab)
  - ▣ Downloads



# Seminar Objectives

- After attending this seminar, you should gain a basic understanding of:
  - ▣ The assessment and cleanup process for the environmental impacts at a mill site
  - ▣ Constraints of mill sites
  - ▣ Financing and funding options for mill redevelopment projects
  - ▣ The role of the community in mill redevelopment projects.

NJIT

TECHNICAL ASSISTANCE TO  
BROWNFIELD COMMUNITIES  
PROGRAM

EPA REGIONS 1, 2 AND 3

*NJIT TAB*

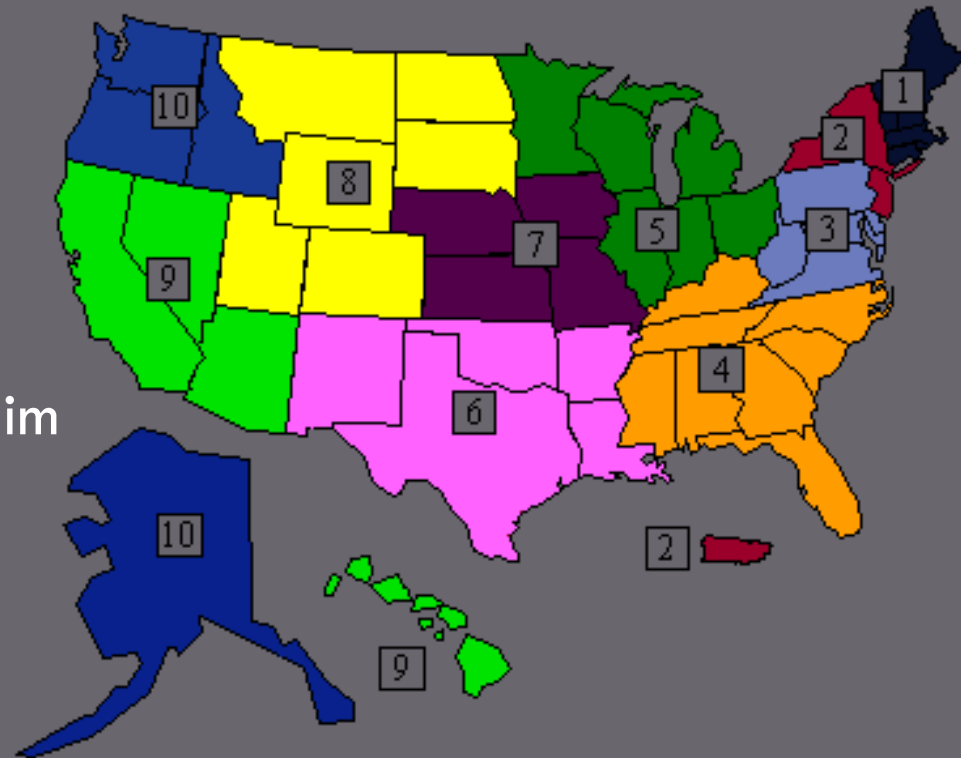
*973-642-4165 (HOTLINE)*

Elizabeth Limbrick 973-596-5519

*Limbrick@NJIT.edu*

# What is TAB?

TAB is a technical assistance program, funded by the USEPA, which is intended to serve as an independent resource to communities and nonprofits attempting to cleanup and reclaim brownfields.



NJIT's TAB program covers Geographic Zone 1 for communities in EPA Regions 1, 2, and 3.

# Who is the TAB Team?

- A multi-disciplinary team consisting of personnel with academic research, government, industry and consulting experience.
- NJIT has been providing brownfields services to communities for over 20 years.



# What are NJIT TAB Services?

NJIT TAB can provide **free** assistance throughout the brownfield process,  
from getting started  
to staying on track  
to getting the job done.

All services must be aimed at achieving Brownfields clean up and redevelopment and be consistent with Region 1, 2 and 3 programs.

# Who Can Receive TAB Assistance?

- ✓ Local, regional, state and tribal governments and nonprofits interested in obtaining EPA brownfields grants



- ✓ EPA brownfield grantees in EPA Regions 1, 2 & 3



# Examples of TAB Services

- One-on-One Technical Assistance
- Review , Analysis, and Interpretation of Technical Reports
- Assistance with Procuring Consultants
  - ▣ Examples of RFPs
  - ▣ Consultant Selection Process
- Brownfields Workshops
- Webinars
- Review and Comment for Grant Applications

# How Does NJIT TAB Provide Services?

## *Through...*

### **Collective Community Workshops**

on brownfields basics or on specific issues

### **Interactive Website** [www.njit.edu/tab](http://www.njit.edu/tab)

- online “How To” manual
- answers to basic questions
- success stories showing what other communities have achieved
- “Ask the Answer Team”- professionals answer your specific questions to those tough issues

### **Direct Technical Mentoring**

through meetings, phone/email conversations



Technical Assistance for Brownfields [TAB@NJIT.EDU](mailto:TAB@NJIT.EDU)

# Example Project: Rhode Island Environmental Justice League

## □ SITE:

- Former Tidewater MGP and Power Plant
- NJIT TAB Assistance:

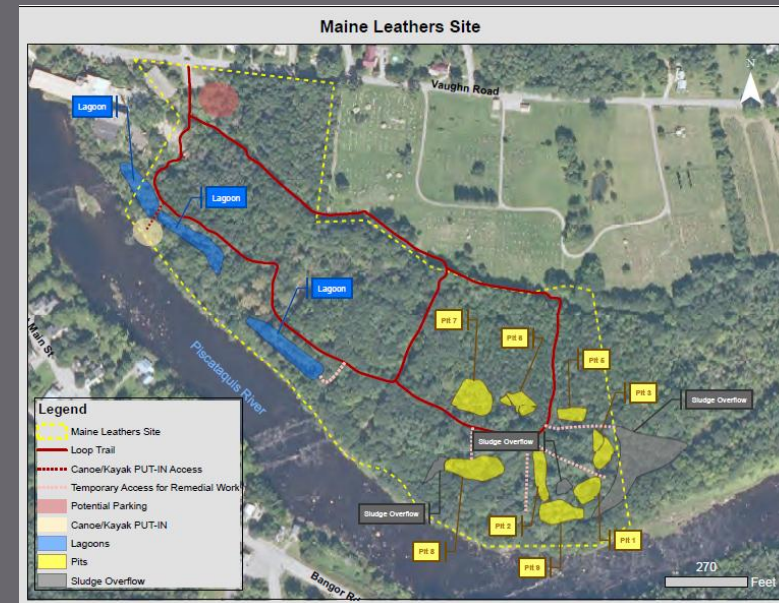


- Provided recommendations to RIELJ to minimize exposure to the community (in particular the students at the nearby schools).
- Summarized the major contaminants of concern at the site and their potential health effects

# Example Project: Maine Leathers Site Dover-Foxcroft, Maine

NJIT is providing technical assistance to the town of Dover-Foxcroft for the redevelopment of the Maine Leathers Site – Including:

- Conducting a Visioning Charrette- guiding the Core Stakeholder Group through a site reuse thought process
- Developing Conceptual Scenarios
- Creating a Redevelopment Action Plan



# Example Project: Middlesex County Improvement Authority

## □ SITE:

- 1.3 acre site – prior use was auto salvage yard; operations ceased early 2000's.
- Approximately 12 AOCs were investigated. GPR, soil sampling (38 samples), groundwater sampling.

## □ NJIT ASSISTANCE:

- NJIT assisted in Brownfield Inventory and Consultant Procurement.
- NJIT assisted the Stakeholders with devising an alternate work plan on the fly when shallow bedrock precluded the use of down hole direct sensing tools.

## □ OUTCOME:

- No impacts (beyond natural background) identified.
- NJ DEP issued a “No Further Action” (NFA) letter.



# Examples of NJIT Workshops

- Removing Barriers to Brownfield Redevelopment
  - ▣ Reuse Planning
  - ▣ Brownfield Inventories
  - ▣ Success Stories
- Revolving Loan Fund (RLF)
  - ▣ RLF 101: The Loan Process from Beginning to End
  - ▣ RLF Procurement
  - ▣ Marketing your RLF Grant
- EPA Cleanup Grant Requirements

# Webinars

- How to Prepare a Competitive EPA Brownfield Grant Application
- EPA ARRA-Funded Grant Requirements
- Funding for Brownfield Projects: Creative, Timely Federal Sources for Grants

# What is the Basis for TAB Providing Services?

- TAB's ability to effectively fulfill the service
- Order in which requests are received
- Relative need of the community
  - insufficient technical expertise available
  - need for redevelopment
  - difficulty getting project started/completed
  - value of service to a broader area or region
  - equitable balancing of service between communities and stakeholders across the service area



# NJIT TAB CONTACT INFORMATION

NJIT TAB Hotline 973-642-4165 [tab@njit.edu](mailto:tab@njit.edu)

<http://www.njit.edu/tab/>



Colette Santasieri [Santasieri@njit.edu](mailto:Santasieri@njit.edu)

Elizabeth Limbrick [Limbrick@njit.edu](mailto:Limbrick@njit.edu)