



CREATING A NEW LOOK ON CAMPUS

One of the most dramatic changes over the past five years is the NJIT campus itself. When President Altenkirch came to NJIT in 2002, the Campus Center and Fenster Hall were under construction, and the restoration work that would win awards for Eberhardt Hall as an historic building had not begun. It was not until fall 2005 that the campus began to sprout our signature red umbrellas and our branding banners and signs. These elements, along with a concerted effort at campus beautification — landscaping, removing dumpsters and garbage containers, replacement of outdoor signage and lighting — give the campus of today an attractive and distinctive look.



Above: The Campus Center was dedicated on NJIT Day in October 2004.



Above center: Opened in 2003, Fenster Hall was dedicated and renamed in honor of President Emeritus Saul K. Fenster in October 2005.



Above right: Displays in Fenster Hall and the Campus Center highlight faculty and student researchers.

Below: The red umbrellas that appear all over the campus have become a symbol of the university, as well as an eye-catching visual element.

Right: The new murals on the Guttenberg Information Technologies Center are the latest campus enhancements.



Left: The restoration of Eberhardt Hall, accomplished using authentic Victorian-era materials and designs, was completed in fall 2005. The building, rededicated as the NJIT Alumni Center, won awards from the Newark Preservation and Landmarks Committee and the Northern New Jersey Chapter of the Victorian Society.



Left: Colorful banners reinforce the university's branding program.



Left: Campus Center, circa 2002

Coming soon . . .

Continuing physical transformation of the **NJIT** campus includes a 2008 agreement to purchase adjacent Central High School, anticipating availability of the building for use by **NJIT** no later than 2012. Following a complete renovation, plans are to have the building serve as an outreach center for education in the STEM disciplines — science, technology, engineering and mathematics, as well as a classroom building. Based at the center will be **NJIT**'s initiatives to improve STEM education through its K-12 outreach programs. These programs are solid positive links to the Newark school system and other school districts in New Jersey.



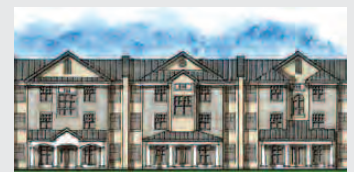
An artist's concept of the Gateway redevelopment courtesy of Elkus Manfredi Architects.

In another step forward for the Gateway plan, the Newark Municipal Council passed a resolution designating **NJIT** as the "sole and exclusive redeveloper" of properties specified in the plan — which covers an area

of some 18 acres north of campus extending along Dr. Martin Luther King, Jr. Boulevard to Orange Street. **NJIT** has responsibility for ensuring implementation in the best interests of all stakeholders. The university will work with Jones Lang LaSalle, an experienced leader in assisting many universities to implement their neighborhood development plans, selected as "master developer" for the project, and Elkus Manfredi Architects, appointed "master planner."

The Gateway project is a key effort to improve amenities available to the university and the surrounding com-

munity. Envisioned as having elements including enhanced housing, new commercial space with shops and restaurants, the project would result in the establishment of a "Greek Village" for fraternities and sororities on campus property adjacent to Lock and Warren Streets.



The Greek Village at NJIT will most likely be similar in design to the Greek Park townhouses at the University of Houston.