

NJIT



New Jersey's Science &
Technology University

THE EDGE IN KNOWLEDGE

The Beginning-Newark Technical School: 1881-1919

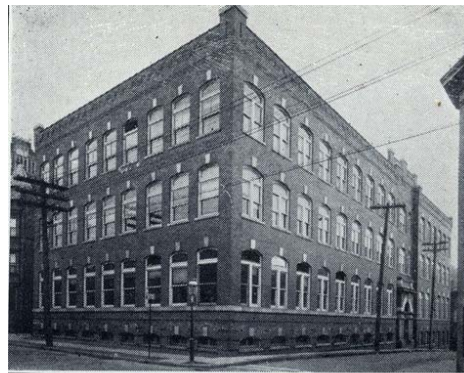
- Newark Technical School founded to meet Newark's educational needs in support of a wide range of industries

- Director Charles Colton welcomes the inaugural class of 88 Newark residents, including Fred Eberhardt, on West Park St.

- 1886-High St. and Summit Place

- 1913-Laboratory building, later Colton Hall

1881-2006



THE LABORATORY BUILDING



THE ACADEMIC BUILDING

THE EDGE IN KNOWLEDGE

The Early Years-Newark College of Engineering: 1919-1975

- BS degree-granting institution established in 1919 functioning under an evolving set of names

- Newark College of Engineering named under Allan Cullimore

- Campbell (1925) and Eberhardt (1948) Halls

- Robert Van Houten and William Hazell lead program expansion-including PhD's, CS, NJSOA



1881-2006

THE EDGE IN KNOWLEDGE

Transition Years- New Jersey Institute of Technology: 1975-2006

- Saul Fenster guides founding of CSLA, SOM, ADHC, CCS

- Physical expansion continues and residence halls established

- Fenster Hall, Campus Center, and Eberhardt Hall NJIT Alumni Center dedicated



1881-2006

THE EDGE IN KNOWLEDGE



New Building Sites

Acquisition

Tomorrow New Jersey Institute of Technology

- Involvement in redevelopment of the City of Newark expands



Newark Arena



Digital Century Building

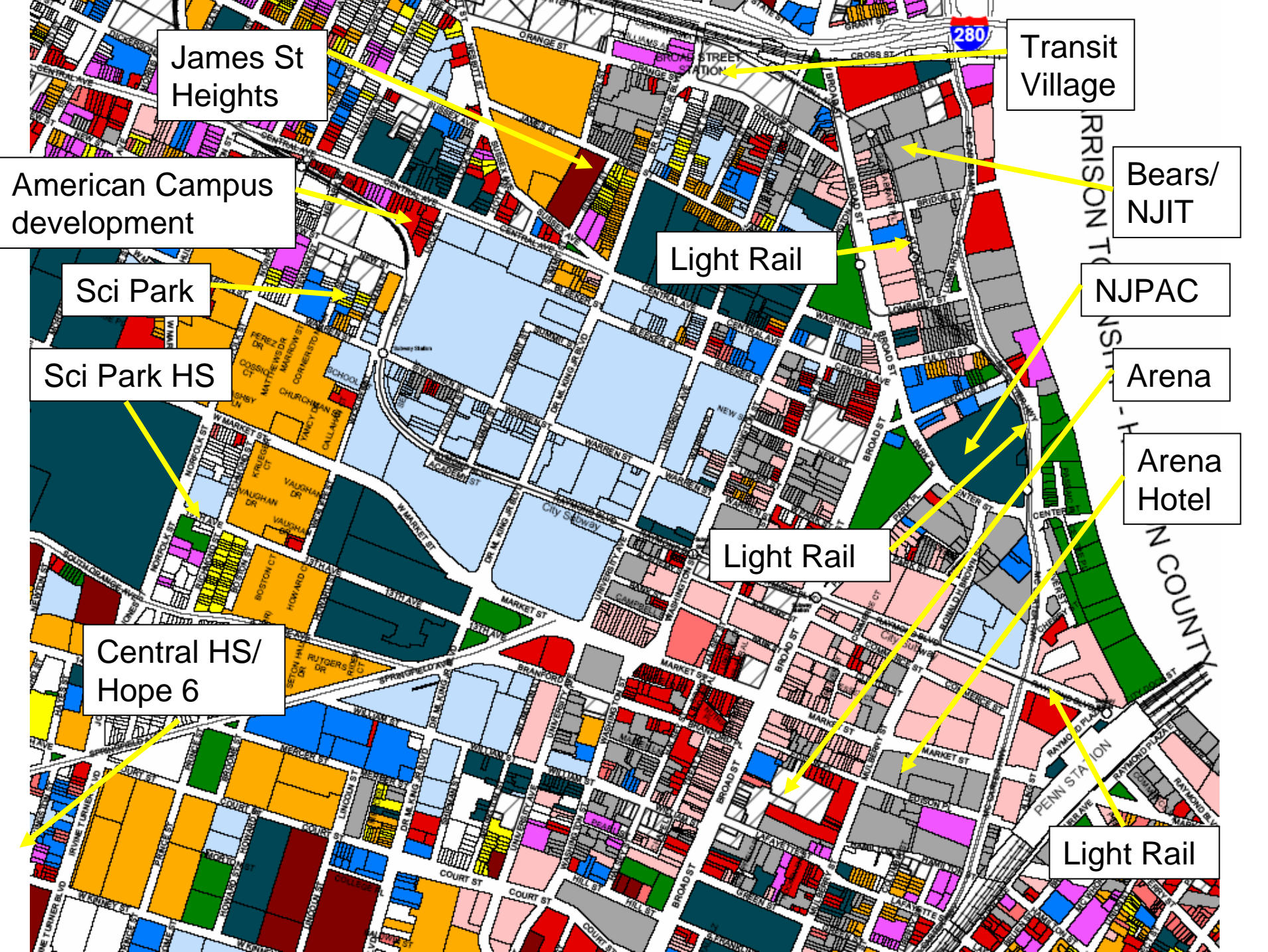


Science Park High School



The Village at Newark

THE EDGE IN KNOWLEDGE



James St Heights

Transit Village

American Campus development

Bears/ NJIT

Sci Park

Light Rail

NJPAC

Sci Park HS

Arena

Central HS/ Hope 6

Light Rail

Arena Hotel

Light Rail



New Jersey's Science & Technology University

THE EDGE IN KNOWLEDGE



125th Year
direct mail
series



Branding and
information kit



NJIT

New Jersey's Science & Technology University

THE EDGE IN KNOWLEDGE



THE EDGE IN KNOWLEDGE:
honors for students in many fields

- Bill Gates Millennium Scholars: Jennifer Dorn(CS), Gloria Portocarrero (BME) and Jessica Samper (IT)
- 2005 National Society of Black Engineers Board of Corporate Affiliates Scholars: Renald Benoit (IS) and Felix Mbuga (CHE)
- The Best and the Brightest 2005 Doctoral Fellowship, Ministry of Education of Thailand: Karnsibhan Olapayarakul (IS), PhD candidate
- Six Arthur Ashe Sports Scholars: Jennifer Dorn (CS), cross country; Mario Douglas (EM), soccer; Sita Kulkarni (BME) volleyball; Elizabeth May (BME), cross country; Deepthi Sanjai (Bio), fencing; Donelle Small (Arch), swimming
- 2005 Hispanic Society of Hisp Eastern Techni Danny Lozano (CHE), First Plac Conference, TE
- Johnson and Jo Substance Man Kathleen Gibbe



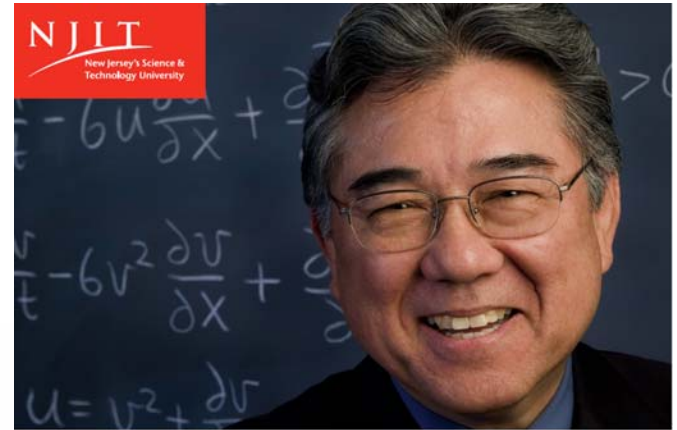
OFFICE OF THE PRESIDENT
NEW JERSEY INSTITUTE OF TECHNOLOGY
UNIVERSITY HEIGHTS
NEWARK, NJ 07102-1000

FIRST CLASS MAIL
U.S. POSTAGE
PAID
PERMIT NO. 1353
NEWARK, NJ

THE EDGE IN KNOWLEDGE
in applied mathematics at NJIT

- NJIT's Robert M. Mifara has been awarded the prestigious 2006 Leroy P. Steele Prize, along with co-authors Clifford S. Gardner, John M. Greene, and Martin D. Knakal, from the American Mathematical Society
- The Steele Prize recognized the team's seminal contributions to research on solitary wave behavior with significant applications in optics, plasma physics, and ocean, atmospheric, and planetary sciences
- NJIT mathematicians direct more than 30 current grants from NSF, NIH, NASA, and other agencies
- NJIT is one of the nation's only recipients of NSF and Howard Hughes Medical Institute grants to provide integrated biological-mathematical training for undergraduates and graduates, respectively

Learn more about Mathematical Sciences at NJIT:
math.njit.edu



THE EDGE IN KNOWLEDGE
in security, ubiquitous computing and wireless communications

- NJIT ranks among the nation's top 25 campuses: Designated one of the nation's most technologically sophisticated universities by Forbes.com and a Princeton Review survey based on the ratio of computers to students, campus-wide and wireless networks, and technology-enhanced learning, among other factors
- NJIT has received major NSF funding to build SmartCampus, a wireless, peer-to-peer, location-aware community system, a living laboratory immersing NJIT students in a world of wearable computers and defining the next generation of computing applications
- NJIT researchers have designed cutting-edge homeland security information systems, such as the Dynamic Emergency Response Management Information System (DERMS) that enables a virtual command center to facilitate collaborative decision making and critical improvisation from multiple locations

Learn more about SmartCampus at NJIT:
www.njit.edu/smartcampus



OFFICE OF THE PRESIDENT
NEW JERSEY INSTITUTE OF TECHNOLOGY
UNIVERSITY HEIGHTS
NEWARK, NJ 07102-1000

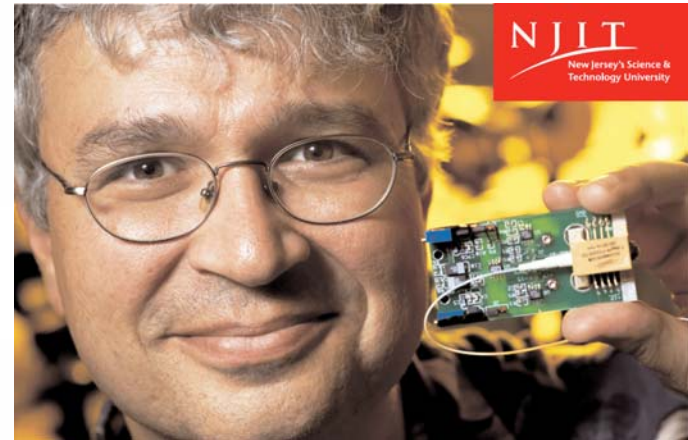
FIRST CLASS MAIL
U.S. POSTAGE
PAID
PERMIT NO. 1353
NEWARK, NJ

THE EDGE IN KNOWLEDGE
in homeland security

NJIT's Homeland Security Technology Systems Center:
Protecting the nation from terrorist attacks

- Designated by the State of New Jersey
- Leading national demonstration projects to protect shopping malls and schools from terrorist attack
- Capabilities:
 - Leading edge digital video surveillance
 - Generation of 3-D facial recognition model from any standard photograph; developed by CyberE-Struder, an award winning start-up firm in NJIT's technology business incubator
 - Detection of suicide bombers and concealed explosives using terahertz radiation; being developed with Picometric, Inc. with federal support through the Technical Support Working Group
 - New approaches to emergency response command and control based on advanced concepts in collaborative computing with key decision makers dispersed in multiple locations

Learn more about NJIT's research related to homeland security at
<http://www.njit.edu/homeland.php>

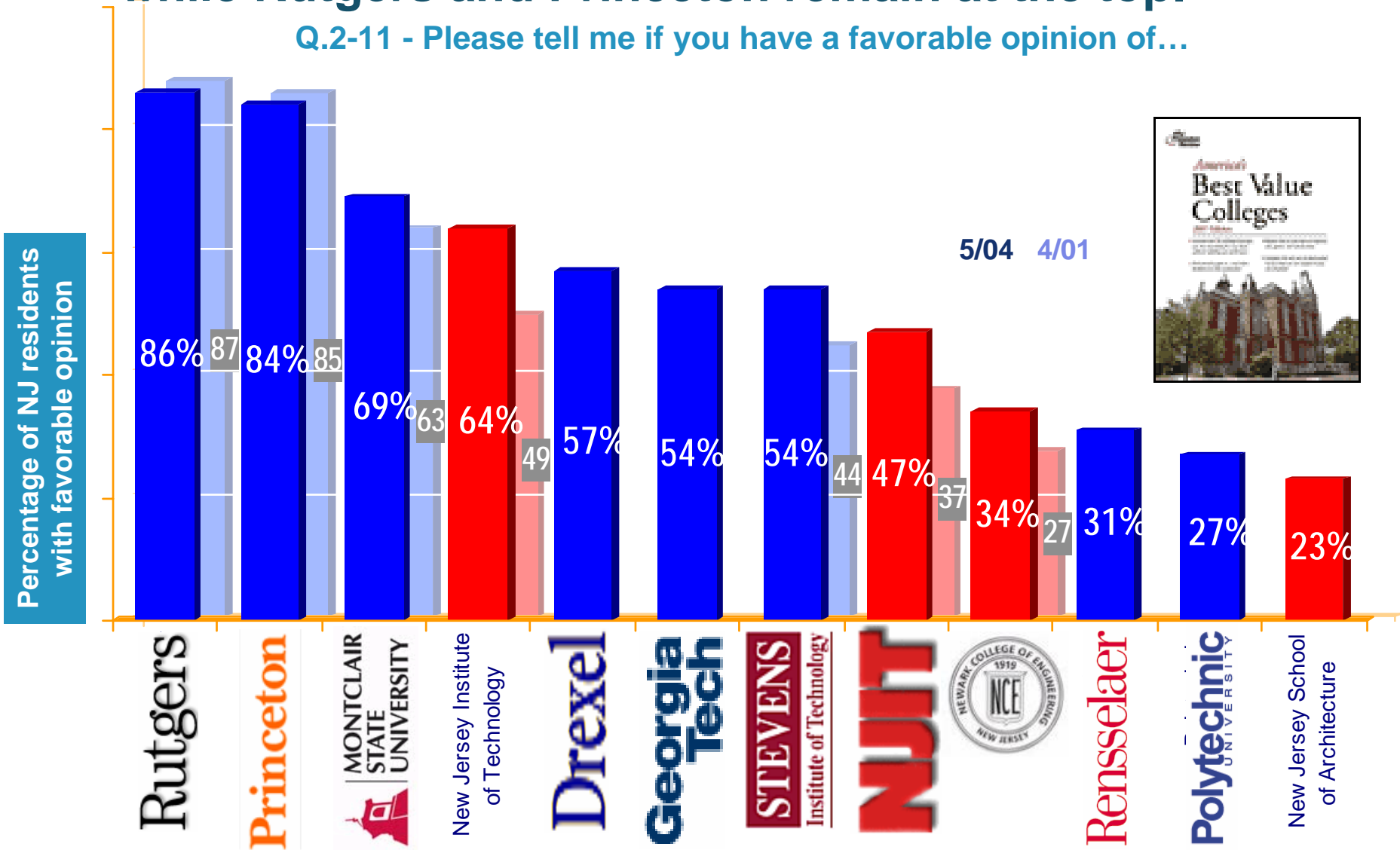


New Jersey's Science & Technology University

THE EDGE IN KNOWLEDGE

New Jersey Institute of Technology has made gains, while Rutgers and Princeton remain at the top.

Q.2-11 - Please tell me if you have a favorable opinion of...



NEW JERSEY INSTITUTE OF TECHNOLOGY
1881
125 YEARS
2006
· EDUCATION · RESEARCH ·

