

NJIT



New Jersey's Science &  
Technology University

*THE EDGE IN KNOWLEDGE*

# NJIT

New Jersey's Science &  
Technology University

- **Central High School**
- **Stem Cell Research Facility**
- **NJIT Campus Gateway Plan**
- **FY08 Budget**
- **Faculty Separation Incentive Program**
- **Legislative Task Force on Higher Education and the Economy**

***THE EDGE IN KNOWLEDGE***



Before & After Study - After Image



- Two developers interviewed
- Warren St. property razed
- 240 King being decommissioned
- Mormon Church property being swapped
- Planner to begin work in March
- Redevelopment plan complete in June



# Governor's Proposed FY08 Budget

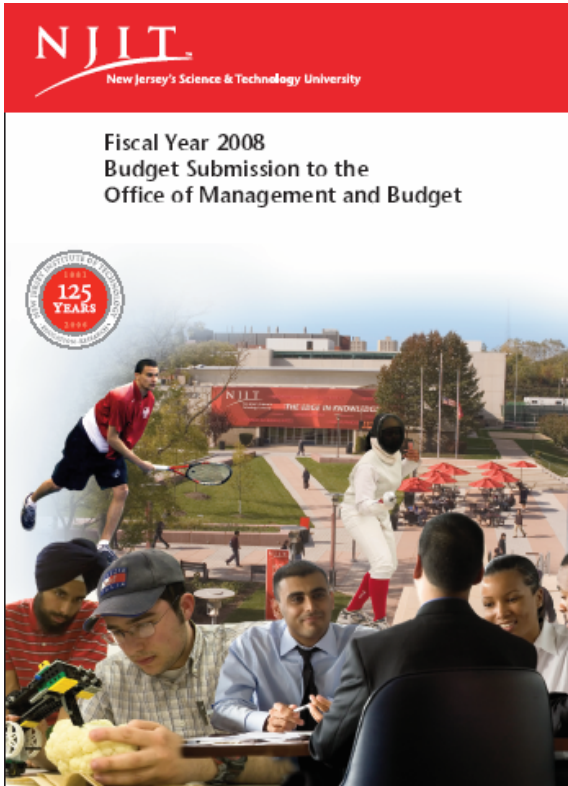
- 2.75% increase in operating funds (penalized for UG out-of-state enrollment of 10%; Honors=17%, Arch=12%, Athletics=23%)
- 54% of FY07 salary annualization funds
- 0 FY08 salary program funds

## Impact:

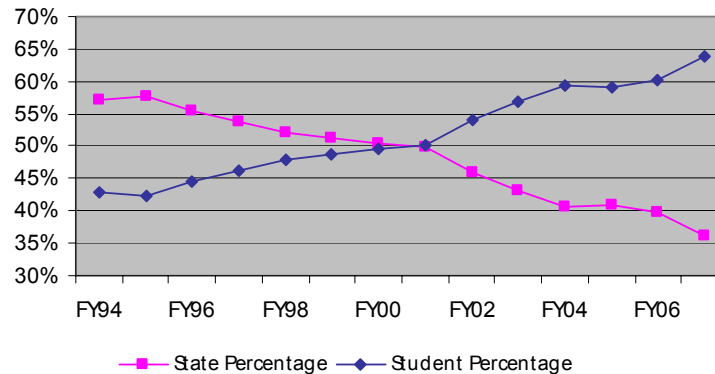
**\$3.6 million shortfall**

**2.85% of tuition+fees+state appropriation**

**≅ 7% tuition increase**



Percent of Educational Costs FY94-FY07





# Faculty Separation Incentive Program

- Tenured faculty eligible
- Lump sum payment on separation
- $(\text{yrs} \times 4 / 100) \times \text{salary} + (\text{if } > 25 \text{ yrs}) \$1,000/\text{yr}$

Faculty Service Distribution (Jan 07)			
Years	# Tenured	Avg Age	
50+	1	81	1
40	19	72	20
30	33	67	53
25	18	62	71
20	40	61	111
15	52	56	163
Total	163		163
Total Tenured Faculty = 237			
Total Tenure-track Faculty = 61 (not tenured)			

# NJIT

New Jersey's Science &  
Technology University

- **Central High School**
- **Stem Cell Research Facility**
- **NJIT Campus Gateway Plan**
- **FY08 Budget**
- **Faculty Separation Incentive Program**
- **Legislative Task Force on Higher Education and the Economy**

***THE EDGE IN KNOWLEDGE***