

NJIT



New Jersey's Science &  
Technology University

*THE EDGE IN KNOWLEDGE*

# Priorities

- New Program Implementation
- Expansion of St. George's Partnership
- Status of Central High
- NJIT Campus Gateway Project
- Strategic Planning
- Middle States Self-Study
- Comprehensive Campaign
- Project ORBIT

# Priorities

- New Program Implementation
- Expansion of St. George's Partnership
- Status of Central High
- NJIT Campus Gateway Project
- Strategic Planning
- Middle States Self-Study
- Comprehensive Campaign

College/School	Fully Approved by State	New Program	Enrolled	Deferred
CoAD	x	Digital Design (BA)	x	
	x	Interior Design (BA)	x	
	x	Art (BFA)		x
		Landscape Architecture (BS)		
NCE	x	Healthcare Systems Management (MS), MIE	x	
	x	Power and Energy Systems (MS), ECE	x	
	x	Pharmaceutical Bioprocessing (MS) CBPE		
	x	Pharmaceutical Systems Management (MS) <b>MIE</b>	x	
		Pharmaceutical Materials Properties and Processing (MS), CBPE		
	x	Bioelectronics (MS), ECE	x	
	x	Critical Infrastructure (MS)		x
SOM	x	International Business (BS)	x	
	x	International Business (MS)	x	
		Management Information Systems (MS)		
		Accounting		
		Sports Management		

College/School	Fully Approved by State	New Program	Enrolled	Deferred
CCS	x	Computing and Business (BS), CS and SOM	x	
	x	Computing and Business (MS), CS and SOM	x	
	x	Business and Information Systems (BS), IS and	x	
	x	Business and Information Systems (MS), IS and	x	
	x	Emergency Management and Business	x	
	x	Software Engineering (MS), CS	x	
	x	IT Administration and Security (MS), IT	x	
CSLA		Mathematical and Computational Finance (MS) Math (replaced Fin Eng. MS)		
	x	Computational Sciences (BS), Math	x	
		Biophysics (BS), PHY		x
		Biochemistry (BS), CES		
	x	Pharmaceutical Chemistry (MS), CES	x	
	x	Biostatistics (MS), Math	x	
	x	Law, Technology and Culture (BA), HIS	x	

# St. George's University-NJIT Partnership

- Accelerated BS or BA (NJIT)/MD (SGU) program
  - 3 yrs at NJIT
  - 2 yrs at St. George's in Grenada (basic science)
  - 2 yrs at (generally) St. Michael's (clinical rotation)
  - Clinical assignment by St. George's
  - About 5 students per year

# Enhancing St. George's University-NJIT Partnership

- Establish the NJIT School of Medicine, Inc.
- Affiliate with NJIT and SGU
- SGU manages basic science program
- NJIT, SOM, Inc. manages clinical rotation program
- SGU manages Yr 1 and Yr 2 of revenue
- NJIT SOM, Inc. manages Yr 3 and Yr 4 revenue
- Joint NJIT-SGU MD degree
- SGU MD degree alternatively accredited in NJ, and other states
- Entrance into program:
  - Accelerated BS or BA (NJIT)/MD (joint NJIT-SGU)
  - 4 yr BS or BA/MD (joint NJIT-SGU)

# Research and Academic Program Benefits from Enhancing St. George's University-NJIT Partnership

- Opportunities for NJIT faculty to build relationships with medical researchers and clinicians
- Increased potential for NIH funding
- Develop better understanding of clinical needs and perspectives
  - Impact on NJIT research and curriculum development
  - Develop interdisciplinary teams to pursue joint research and training programs
- Develop MD/PhD programs
- Enhance PhD programs in bio-related areas

# Research and Academic Program Benefits from Enhancing St. George's University-NJIT Partnership

- Enhanced recruitment of students into NJIT's undergraduate life-sciences related programs
- Clinical patents and technology transfer

## Additional Benefits

- Increased access to medical education in New Jersey
- Increased physician retention in the State
- No financial commitment from the State

# Enhancing St. George's University-NJIT Partnership-Status

- Joint MD Degree Program Announcement Complete
  - Approval from
    - Graduate Council
    - CAA
  - Presented to Faculty Council
  - Tentatively slated for consideration at Feb Faculty Meeting
  - Tentatively slated for consideration at Feb Board of Trustees Meeting
- Meetings with elected officials
- Meetings with UMD
- Meeting scheduled with Board of Medical Examiners representative

# Need for NPS to use Old Central High School

<b>Action</b>	<b>Plan #1-Renovate West Side</b>	<b>Plan #2-Build New West Side</b>	<b>Final Plan-Build New West Side</b>
<b>Move Students from West Side to Old Central</b>	<b>1</b>	<b>1</b>	
<b>Renovate West Side</b>	<b>2</b>		
<b>Demolish Old West Side</b>		<b>2</b>	<b>2</b>
<b>Build New West Side</b>		<b>3</b>	<b>1</b>
<b>Move Students from Central to West Side</b>	<b>3</b>	<b>4</b>	
<b>Time for Old Central to NJIT</b>	<b>2012</b>	<b>2014</b>	<b>2010</b>

---

# NEWARK PUBLIC SCHOOLS WEST SIDE HIGH SCHOOL FEASIBILITY STUDY

*Prepared for review by*

**NEWARK PUBLIC SCHOOLS  
SUPERINTENDENT - DR. CLIFFORD B. JANEY**



*Evaluation of Program Requirements, Conceptual Options, and Staging Scenarios*

**REPLACEMENT OF EXISTING WEST SIDE HIGH SCHOOL  
403 South Orange Avenue; Newark, NJ 07103**

**SEPTEMBER 15, 2009**

**CONSULTANT: SSP ARCHITECTURAL GROUP  
148 West End Avenue, Somerville, NJ 08876 T.908-725-7800 CN 7568**

# NJIT Campus Gateway Project

## Purpose/Vision\*:

- “In the past few decades, it has become increasingly difficult for urban colleges and universities to turn their backs on the problems of their cities, because these institutions cannot deny that the cities troubles have become their own as well.”
- “We became to believe that we could better educate and exhort talented students to contribute to society and become leaders if we offered them an institutional example of positive civic engagement.”

\* *The University & Urban Revival: Out of the Ivory Tower and Into the Streets*, Judith Rodin, 2007, U of Penn Press

# NJIT Campus Gateway Project

## Purpose/Vision\*:

- “Far from robbing Penn’s academic future to pay for this progress, the University’s engagement as urban developer has played a critical role in enhancing Penn’s academic reputation. All the marker’s of academic success--rankings, faculty awards, student applications, selectivity, growth in endowment-have soared to record levels.”

\**The University & Urban Revival: Out of the Ivory Tower and Into the Streets*, Judith Rodin, 2007, U of Penn Press

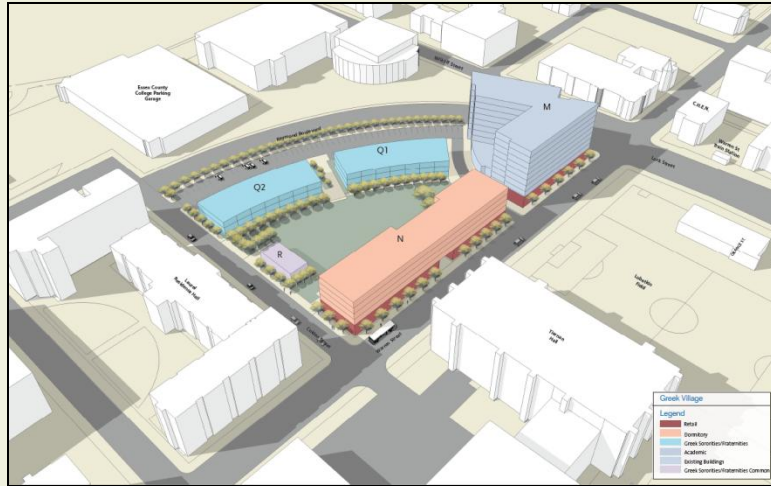
# Status of NJIT Campus Gateway Project

<b>Milestone</b>	<b>Date</b>
<b>Central Planning Board Plan Approval</b>	<b>September 2008</b>
<b>Conditional Designation of NJIT as Redeveloper pending Plan Approval</b>	<b>March 2008</b>
<b>Municipal Council Plan Approval</b>	<b>January 2009</b>
<b>Conditional Designation of NJIT as Redeveloper pending RDA Approval</b>	<b>January 2009</b>
<b>Municipal Council Designates NJIT as Redeveloper/RDA Approval</b>	<b>August 2009</b>
<b>City of Newark Executes RDA</b>	<b>October 2009</b>

# Status of NJIT Campus Gateway Project

<b>Milestone</b>	<b>Date</b>
<b>Jones Lang LaSalle enters into a Joint Venture Partnership with Private Equity Group</b>	<b>December 2009</b>
<b>NJIT Enters into a Development Agreement with Jones Lang LaSalle</b>	<b>December 2009</b>
<b>NJIT Receives First Installment of Repay from Jones Lang LaSalle of Cash Advance</b>	<b>December 2009</b>
<b>Phasing Plan and Construction Schedule to Newark</b>	<b>January 2010</b>
<b>Business Reporting and Outreach Plan to Newark</b>	<b>January 2010</b>
<b>Greek Village RFQ/JLL Develop Parking Deck</b>	<b>Feb-Apr 2010</b>
<b>Engage outside Counsel</b>	<b>February 2010</b>
<b>Establish NJIT Development Corporation (?)</b>	<b>April 2010</b>

# Greek Village



# MLK Gateway



# St. Michael's



# University Park

# Strategic Planning

- Progress tracked at:  
<http://www.njit.edu/president/planning/strategicplan-2010-2015/index.php>
- **ViSTa – A Strategic Planning Process for NJIT**  
**Vision – Strategy – Tactics**
- Mission, Vision, Core Values, Value Proposition, Strategies, Objectives, Tactics, Resources, Metrics
- Steering Committee drafted Strategies, Objectives, Metrics
- Task Forces drafted Tactics
- Resource identification to be added

# Middle States Self-Study

- Progress tracked at:  
<http://www.njit.edu/middlestates/>
- Self-Study Design approved in Spring of 2010
- Draft Self-Study Report due Fall 2011
  - Written by Standard
- Chair visit fall 2011
- Team visit spring 2012
- Issues:
  - Assessment
  - Faculty Handbook



# Shaping Our Future

January 13, 2010

New Jersey Institute  
of Technology

# Shaping Our Future

Increase Student Financial Support ▶

Recruit & Retain Top Faculty ▶

Develop Next-Generation Campus ▶

## Campaign Objectives

- **\$50 million** to endow scholarships and fellowships
- **\$25 million** to endow chairs/professorships; fund teaching & support of student research
- **\$75 million** to make capital investments in advanced wireless systems, enhanced engineering & science labs, and a new STEM center; fund innovative development at College of Architecture & Design