

NJIT



New Jersey's Science &
Technology University

THE EDGE IN KNOWLEDGE

“NIH can wage an effective war on disease only if we – as a nation and a scientific community, not just as a single agency – harness the energies of many disciplines, not just biology and medicine. These allied disciplines range from mathematics, engineering, and computer sciences to sociology, anthropology, and behavioral sciences. But the weight of historical evidence and the prospects for the future place physics and chemistry most prominently among them.”

Harold Varmus

As Director of NIH, now President, Memorial Sloan-Kettering Cancer Center
Nobel Prize, 1989

Strengthening the St. George's University School of Medicine-NJIT Partnership

- Why?
- Overview of medical education
- Overview of St. George's University School of Medicine
- Current SGU SOM-NJIT partnership
- Proposed strengthening of the partnership
- Rationale
- Concerns
- Questions/discussion

Strengthening the St. George's University School of Medicine-NJIT Partnership

- Why?
 - Improved preparation of undergraduate students entering the life-sciences related programs
 - Natural evolution of effort to establish the life-sciences at NJIT
 - Address increased competition
 - Enhanced opportunities in research through interaction with medical clinicians
 - Continues to broaden the university
 - Generates a revenue stream

Steps in Medical Education

- BS or BA (4 yrs)
- MD (Medical School)
 - Basic Science (2 yrs)
 - In residence at Medical School
 - Clinical Science 2 yrs)
 - In residence at Hospital
 - Clinical Clerkship
- Board Certification (Graduate Medical Education)
 - In residence at Hospital
 - Resident (3-7 yrs; teach Clinical Clerkships; partially Medicare funded)
 - 1st yr-Intern (no longer used)
- Fellow
 - In residence at Hospital
 - Subspecialty Resident

Strengthening the St. George's University-NJIT Partnership



St. George's University



- Founded as St. George's University School of Medicine in Grenada in 1976 by four individuals
- School of Arts and Sciences and Graduate Studies Program chartered in 1996
- School of Veterinary Medicine founded in 1999
- Has awarded about 8,500 MD degrees (7,000 to BS/BA grads of US News Top 100; 500 Ivy League grads)

Top 15 US Undergraduate Universities at SGU

School	Total
Univ of California/Los Angeles	391
NY Univ	330
SUNY/Stony Brook Univ	242
Univ of California/Irvine	230
Univ of California/Berkeley	229
Univ of California/Davis	219
Univ of Florida	209
Univ of Toronto	201
Boston Univ	200
Univ of California/San Diego	199
Rutgers Univ/Rutgers Coll	163
Cornell Univ	163
SUNY/Binghamton Univ	149
Univ of Miami	145
Emory Univ	144

Geographic Enrollment Breakdown at SGU

US Citizens	68%
Non-US Citizens	32%
US Permanent Residents	16%*

International (1,009 Students)	% of Non-US Citizens	US (2,779 Students)	% of US Citizens
Canada	54%	California	21%
Trinidad and Tobago	15%	New York	19%
United Kingdom	5%	New Jersey	11%
Grenada	4%	Florida	6%
Botswana	3%	Texas	6%
Other	19%	Other	37%

St. George's Clinical Centers and Hospitals

Clinical Centers

Saint Barnabas Healthcare System:

Saint Barnabas Medical Center

Monmouth Medical Center

Newark Beth Israel Medical
Center

St. George's Clinical Centers and Hospitals

Hospitals

Atlantic Health System:

Morristown Memorial Hospital

Overlook Hospital

Bergen Regional Medical Center

Jersey City Medical Center

St. Francis Medical Center

St. Michael's Medical Center

JFK Medical Centre

Mountainside Family Practice
Associates

Virtua-West Jersey Health System,
Inc.

Residency Placement for SGU Graduates

- National Residency Match Program
 - 99% of US eligible graduates obtain residencies generally of 1st or 2nd choice
 - 2010: 450 placed in US
 - 2010: 12% of placements in NJ
 - St. Josephs
 - Newark Beth Israel
 - St. Barnabas
 - Trinitas
 - St. Peter's
 - Morristown Memorial
 - Atlantic City
 - St. Michael's
 - Seton Hall
 - St. Francis
 - JFK Med Ctr
 - Atlantic Health
 - UMDNJ (Newark)
 - Monmouth
 - Jersey Shore
 - Virtua-West Jersey
 - Cooper Hospital
 - Burlington Cnty Memorial

SGU MD Program

- Year 1 & 2 - Basic Science including: Anatomy, Biochemistry, Physiology, Micro-biology, Pathology, Pharmacology – *Classroom/Laboratory instruction at SGU in Grenada*
- Year 3&4 – 5 terms of Clinical Sciences including: Surgery, Psychiatry, Radiology, Obstetrics, Gynecology, Pediatrics, Family practice, Emergency Medicine, Neurology, Cardiology – *Clinical Clerkships at NJ Teaching Hospitals including: St. Barnabas System, Monmouth Medical Center, St. Joseph's Regional Medical Center, Atlantic Health System, Hackensack, Virtua System, St. Michael's and others.*

St. George's University-NJIT Partnership

- Accelerated BS or BA (NJIT)/MD (SGU) program
 - 3 yrs at NJIT
 - 2 yrs at St. George's in Grenada (Basic Science)
 - 2 yrs in Clinical Clerkship
 - Clinical Clerkship assignment by St. George's
 - About 5 or 6 NJIT students per year

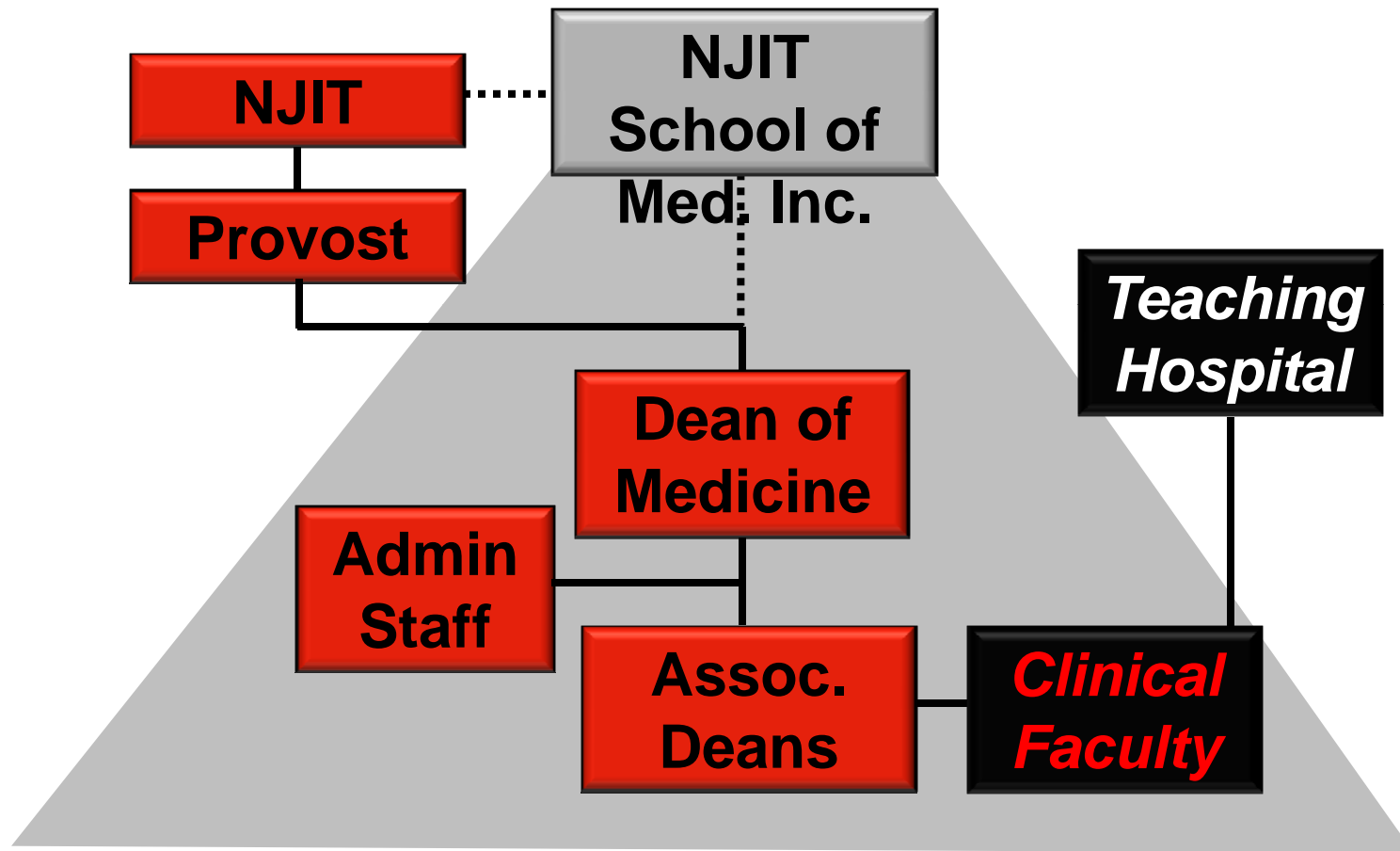
Proposal

- NJIT will add to the number NJ MD students in the state by partnering with an established, well-respected off-shore university with an accredited program.
- NJIT will build on a successful partnership with St. George's University in Grenada that currently enrolls 20 NJIT students in an accelerated BS/MD degree.
- NJIT and SGU will establish a joint MD degree program eligible for accreditation in NJ and other states.
- SGU will teach the traditional first two years of classroom instruction
- NJIT will teach the traditional final two years of clinical practice

Enhancing St. George's University-NJIT Partnership

- Establish the NJIT School of Medicine, Inc.
- Affiliate with NJIT and SGU
- SGU teaches basic science program
- NJIT, SOM, Inc. teach clinical clerkship programs
- SGU manages Yr 1 and Yr 2 of revenue
- NJIT SOM, Inc. manages Yr 3 and Yr 4 revenue
- Joint NJIT-SGU MD degree
- SGU MD degree alternatively accredited in NJ, and other states
- Entrance into program:
 - Accelerated BS or BA (NJIT)/MD (joint NJIT-SGU)
 - 4 yr BS or BA/MD (joint NJIT-SGU)

Operational Structure



Rationale for Enhancing St. George's University-NJIT Partnership

“....less than 12% of physicians licensed in New Jersey graduated from a medical school within the state.....compared to the national average of 29.6% of physicians in a state graduating from an in-state medical school.”

From 2006 “Report of Touro Committee” of NJ BME

“The Association of American Medical Colleges is advocating a 30 percent increase in medical school enrollment, which would produce 5,000 additional doctors each year.” *April 26, 2009 NYT*

Research and Academic Program Benefits from Enhancing St. George's University-NJIT Partnership

- Opportunities for NJIT faculty to build relationships with medical researchers and clinicians
- Increased potential for NIH funding
- Develop better understanding of clinical needs and perspectives
 - Impact on NJIT research and curriculum development
 - Develop interdisciplinary teams to pursue joint research and training programs
- Develop MD/PhD programs
- Enhance PhD programs in bio-related areas

Research and Academic Program Benefits from Enhancing St. George's University-NJIT Partnership

- Enhanced recruitment of students into NJIT's undergraduate life-sciences related programs
- Clinical patents and technology transfer

Additional Benefits

- Increased access to medical education in New Jersey
- Increased physician retention in the State
- No financial commitment from the State

Concerns with Enhancing St. George's University-NJIT Partnership

- What are the academic/research benefits?
 - Enhanced collaborations with clinicians and medical researchers
 - Enhanced recruitment into undergraduate life-sciences programs
- Placement of students into clinical clerkships in NJ hospitals
 - Currently over 300 SGU students in clerkships in NJ
 - Over 250 SGU clerkships are being added over the next few years

Concerns with Enhancing St. George's University-NJIT Partnership

- Is SGU AMA approved?
 - US based medical schools are accredited by the Liaison Committee on Medical Education (LCME), which is sponsored by the AMA and AAMC
 - SGU SOM is a NJ “alternatively accredited medical school” (medical school outside the US that meets NCFMEA of the USDOEd standards) by the NJ Board of Medical Examiners

Concerns with Enhancing St. George's University-NJIT Partnership

- What will happen to the revenue?
 - Cover expenses
 - Net allocated back to NJIT academic and research efforts, primarily life-science related programs
- Would this impact rankings like *US News & World Report*?
 - Most important factors in assigning a Peer Review score:
 - Faculty quality
 - UG Student Selectivity
 - UG Programs

Concerns with Enhancing St. George's University-NJIT Partnership

- What is the purpose of the corporation?
 - Isolates revenues/liabilities from the State university
 - Provides flexibility when dealing with other private entities
 - Funds flow from the corporation to the university, not vice versa
 - Financial construct to simplify auditing

Enhancing St. George's University- NJIT Partnership

Finances (F&A Indirect Cost)

Clinical program tuition per yr	\$49,333
Clinical program hosp fee per yr	(\$16,000)
Net revenue per student/yr	\$33,333
Net revenue 100 students/yr	\$3,333,300
Est personnel (8)	(\$920,000)
Operating (50% indirect cost)	(\$460,000)
Net revenue per yr	\$1,953,300

Enhancing St. George's University- NJIT Partnership

Finances (Per student expenditure)

Clinical program tuition per yr	\$49,333
Clinical program hosp fee per yr	(\$16,000)
NJIT expenditure per student	(\$20,000)
Net revenue per student/yr	\$13,333
Net revenue 100 students/yr	\$1,333,300

Strengthening the St. George's University School of Medicine-NJIT Partnership

- Why?
 - Improved quality of undergraduate students in the life-sciences related programs
 - Natural evolution of effort to establish the life-sciences at NJIT
 - Address increased competition
 - Enhanced opportunities in research through interaction with medical clinicians
 - Continues to broaden the university
 - Generates a revenue stream