

NJIT



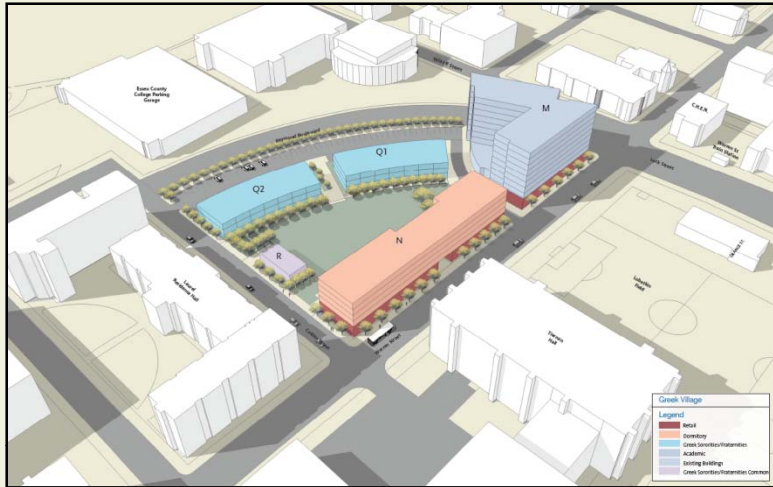
New Jersey's Science &
Technology University

THE EDGE IN KNOWLEDGE

Major Activities

- NJIT Campus Gateway Project
 - Greek Village RFP responses in/developer selection in process
 - Parking deck on St. Michael's lot on MLK proceeding

Greek Village



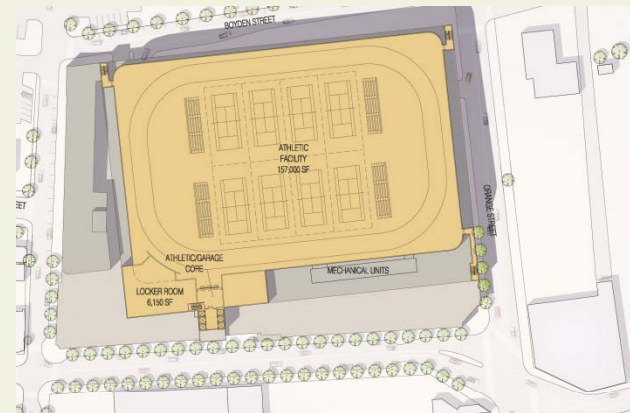
MLK Gateway



University Park

St. Michael's

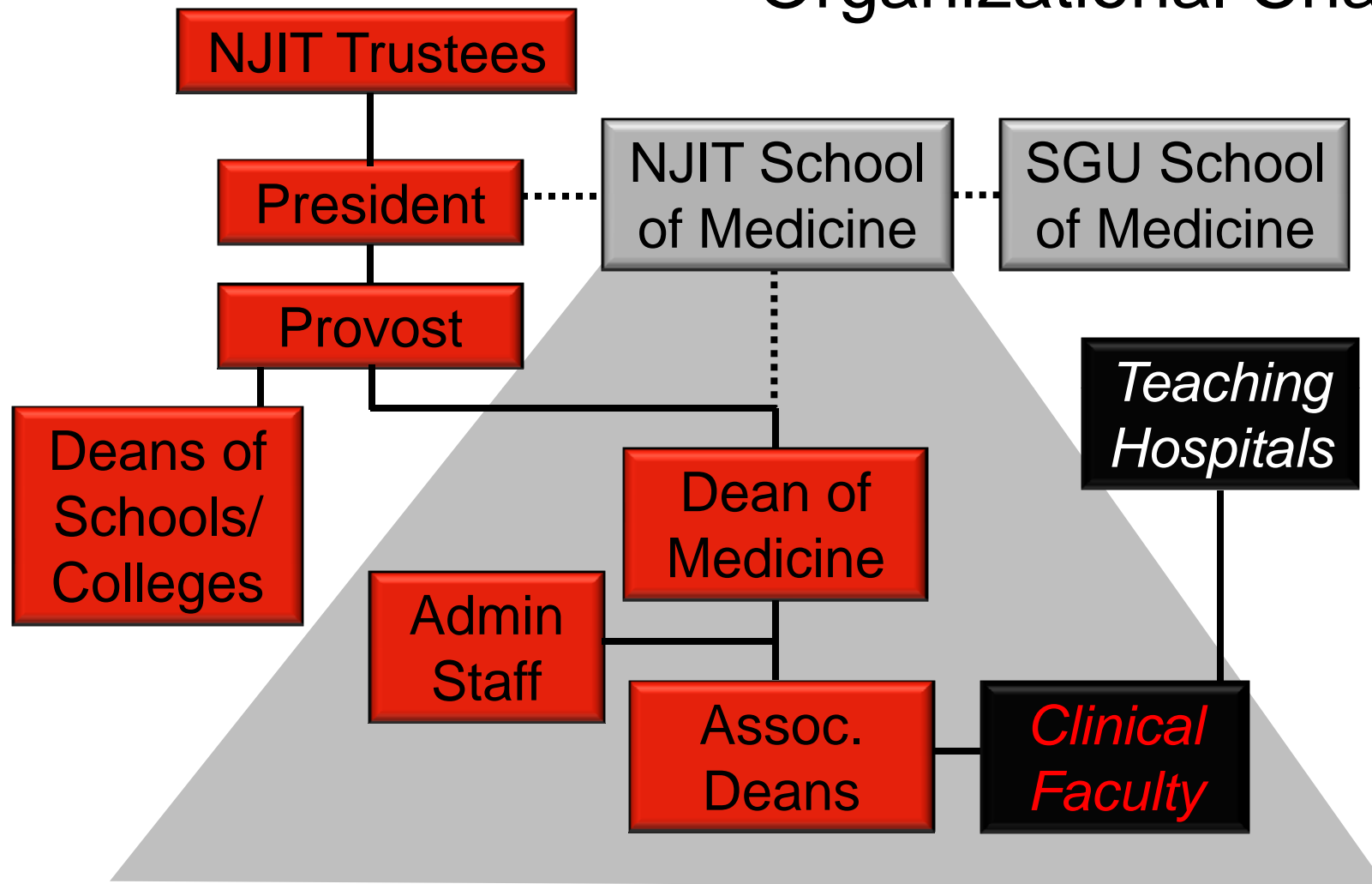




Major Activities

- NJIT Campus Gateway Project
 - Greek Village RFP responses in/developer selection in process
 - Parking deck on St. Michael's lot on MLK proceeding
- NJIT partnership with St. George's University
 - Moved to discussion with the Board of Medical Examiners (10/28)

Organizational Chart



“NIH can wage an effective war on disease only if we – as a nation and a scientific community, not just as a single agency – harness the energies of many disciplines, not just biology and medicine. These allied disciplines range from mathematics, engineering, and computer sciences to sociology, anthropology, and behavioral sciences. But the weight of historical evidence and the prospects for the future place physics and chemistry most prominently among them.”

Harold Varmus

As Director of NIH, now President, Memorial Sloan-Kettering Cancer Center
Nobel Prize, 1989

Major Activities

- NJIT Campus Gateway Project
 - Greek Village RFP responses in/developer selection in process
 - Parking deck on St. Michael's lot on MLK proceeding
- NJIT partnership with St. George's University
 - Moved to discussion with the Board of Medical Examiners (10/28)
- Central High/maintenance projects

Central High/Maintenance Financing

- Currently support about \$9 million of debt service (non-auxiliary)
- Issuing \$76 million of debt
 - \$56 million goes to retire existing
 - Debt service reduced slightly
 - Approximately \$6 million for repayment of purchase of Central High against \$8.2 million purchase
 - Approximately \$2 or \$3 million for campus-wide maintenance
 - Approximately \$11 or \$12 million for Central High
 - Power line burial
 - Securing building envelope
 - Sidewalk repair
 - Some landscaping
 - Interior code upgrades to third floor classrooms, gym, etc.

Major Activities

- NJIT Campus Gateway Project
 - Greek Village RFP responses in/developer selection in process
 - Parking deck on St. Michael's lot on MLK proceeding
- NJIT partnership with St. George's University
 - Moved to discussion with the Board of Medical Examiners (10/28)
- Central High/maintenance projects
- Strategic Plan (2010-2015)/Middle States Self-Study

Strategic Plan 2010-2015

Substantial focus on directing individual efforts

- *Academic and campus life*
 - Performing arts
 - Greek Village
 - Outcomes assessment in student learning
- *Private support*
 - Comprehensive Campaign
 - Reconstituted Alumni Association of NJIT

Strategic Plan 2010-2015

Substantial focus on directing individual efforts

- *Sustainable Systems, Life & Healthcare Science and Engineering, Digital “Everyware”*
 - Course content
 - Campus events
 - Demonstration projects
- *Student faculty recruiting*
 - Enrollment of 11,000
 - Improved retention and graduation rates

NJIT Known to Be:

Innovative

- Performing arts at an Institute of Technology
 - Art and Design
- Integrated assessment and planning
- Life and Healthcare Science and Engineering

Entrepreneurial

- Gateway Project

Engaged

- With neighbors
- With the professions

Progress to Date: Self-Study Design Approved April 6, 2010 by MSCHE



NEW JERSEY INSTITUTE OF TECHNOLOGY

SELF STUDY DESIGN:

A SCIENCE AND TECHNOLOGY RESEARCH UNIVERSITY FOR THE 21st
CENTURY

Prepared April 06, 2010



Prepared for the
Middle States Commission on Higher Education ♦ Rescriditation 2012



New Jersey's Science & Technology University

THE EDGE IN KNOWLEDGE

Major Activities

- NJIT Campus Gateway Project
 - Greek Village RFP responses in/developer selection in process
 - Parking deck on St. Michael's lot on MLK proceeding
- NJIT partnership with St. George's University
 - Moved to discussion with the Board of Medical Examiners (10/28)
- Central High/maintenance projects
- Strategic Plan (2010-2015)/Middle States Self-Study
- Financial planning
 - Faculty Separation Incentive Program
 - Provost/Deans developing faculty hiring plans
 - Enrollment planning

NJIT Enrollment Fall 2006-2010

	Actual				
	2006-2007	2007-2008	2008-2009	2009-2010	2010-2011
Total Undergrad	5380	5416	5584	5924	6089
Total Grad (MS + PhD)	2829	2860	2822	2916	2824
Total Headcount	8209	8276	8407	8840	8913

Enrollment Projections Fall 2010 - 2012

	Actual	Projected		
	2010-2011	2010-2011	2011-2012	2012-2013
Total Undergrad	6089	6101	6162	6223
Total Grad (MS + PhD)	2824	3003	3306	3718
Total Headcount	8913	9104	9468	9941
		+3%	+4%	+5%

Chart VII

NJIT Data

NJIT Tuition & Fees Compared to State Appropriation FY94 - FY10

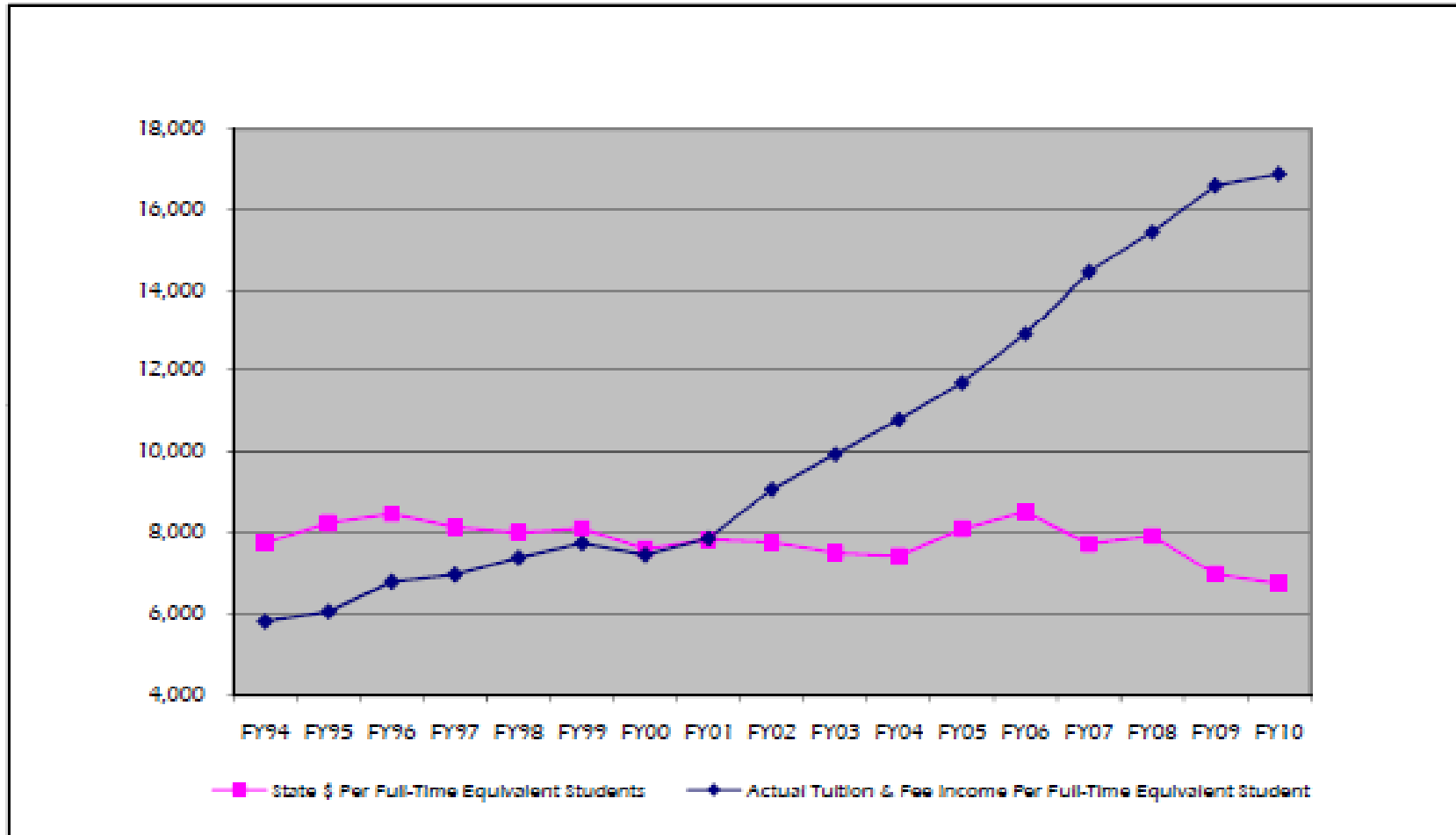


Chart XII
Percent Support of Education Cost per Student FTE FY94-FY10

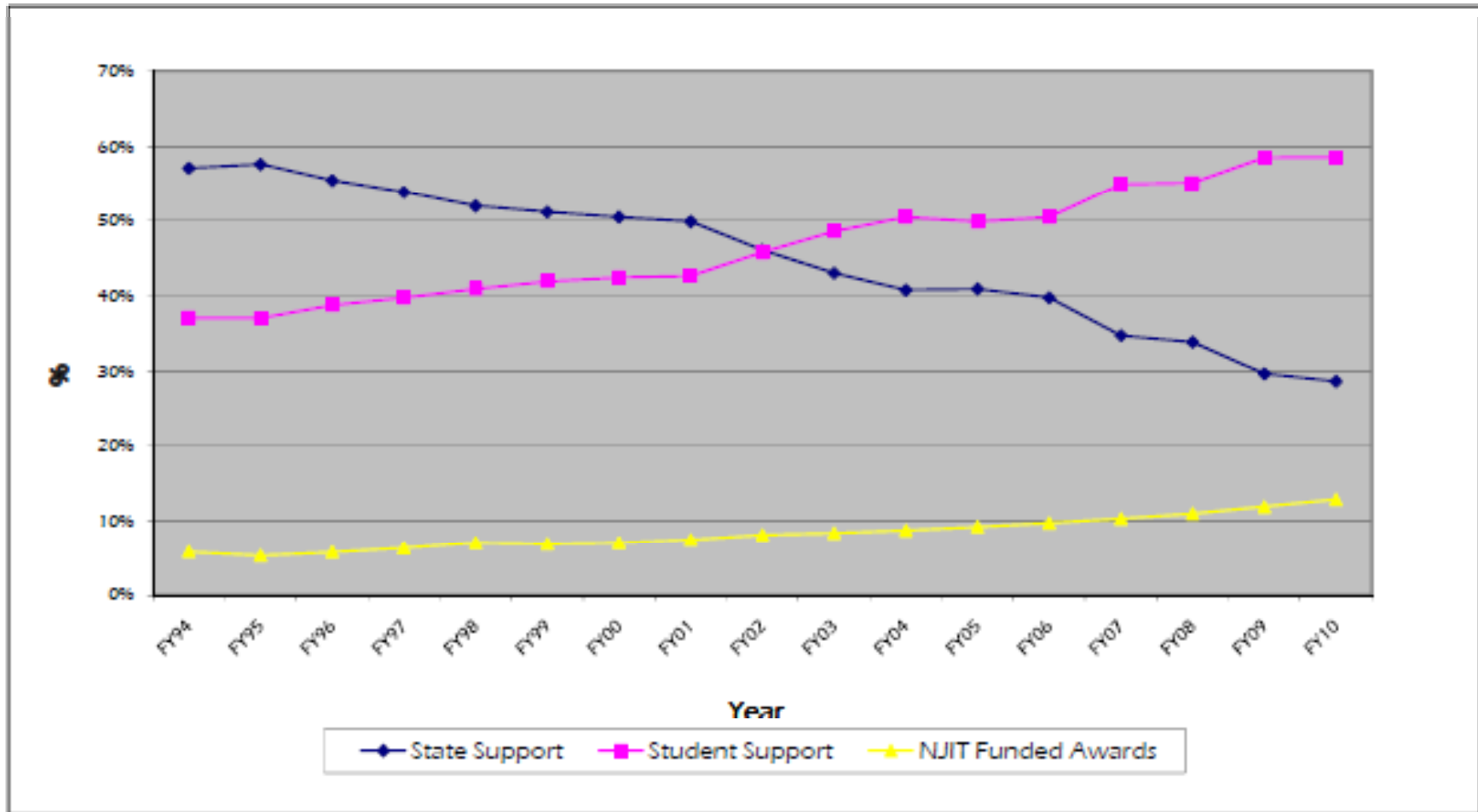
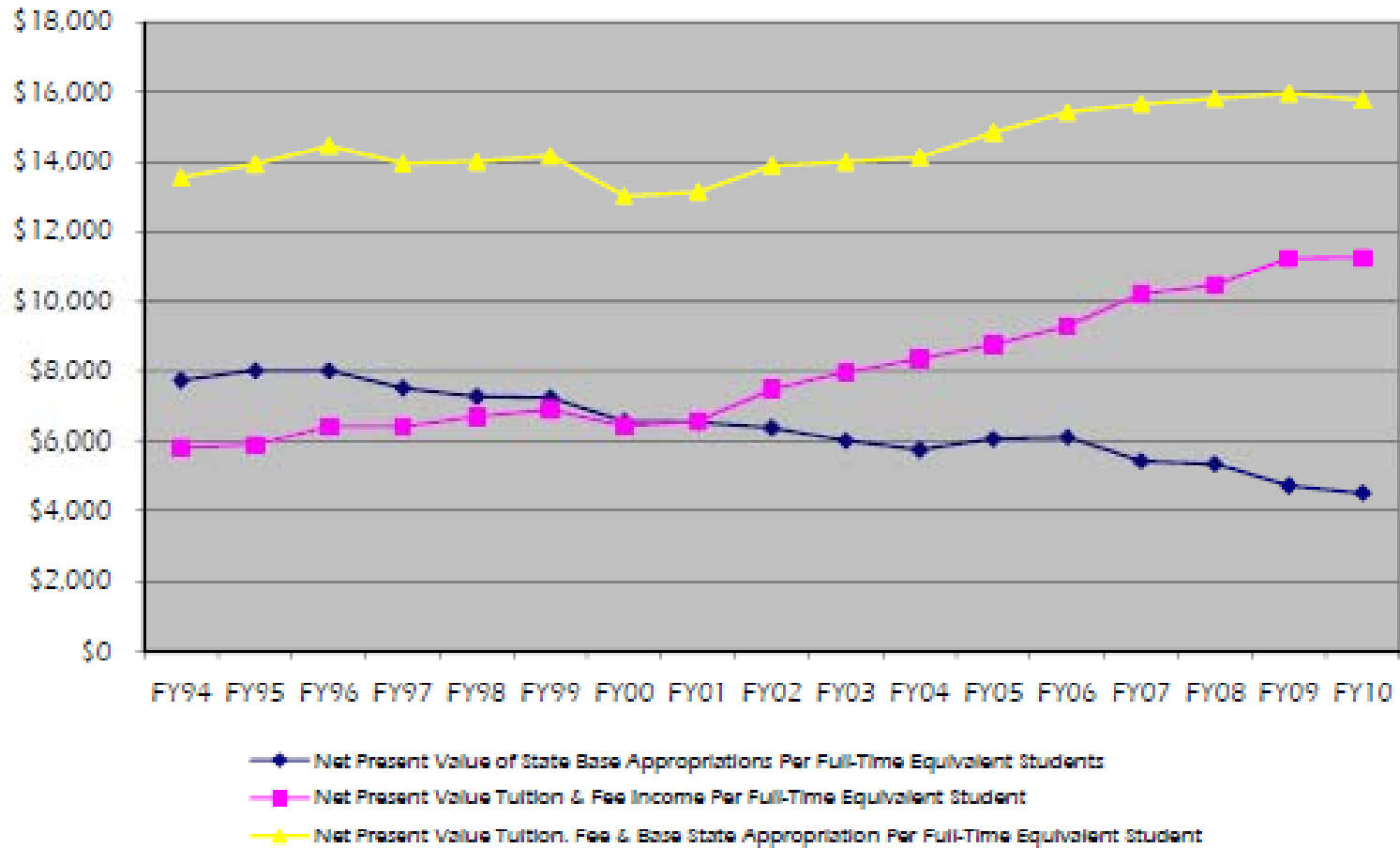


Chart XI

NJIT Data

Comparison of Net Present Value of Base Appropriation and Tuition & Fee Income per FTE FY94-FY10
(\$'000's)



Bloomberg Businessweek

College: Big Investment, Paltry Return

The value of a college degree is a middle-class article of faith. But exclusive new research suggests it may be far less than previously thought

Return on Investment Ranking		
Institution Type	NJT (In-State)	NJT (Out-of-State)
All (852)	81	89
Public	24	29
Public In-State	16	

